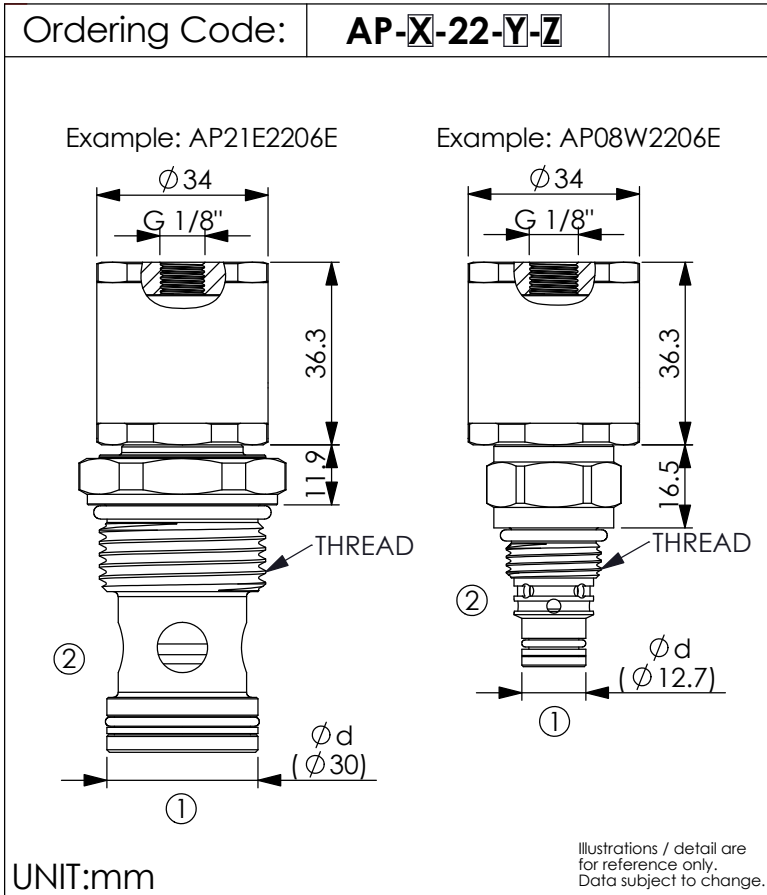


PNEUMATIC OPERATED VALVE (Pneumatic Operated Poppet 2-Way Normally Open)



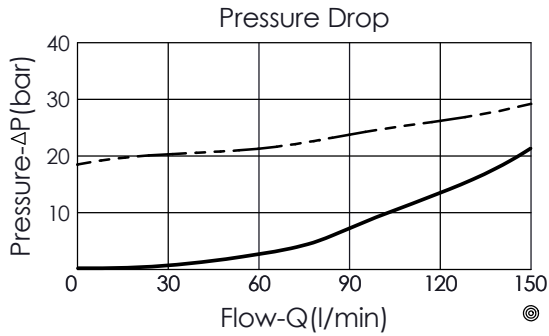
TECHNICAL DATA		
Max. pressure:	350	bar
Filtration:	25 µm nominal or better	
Mounting Position:	unrestricted	
IMPORTANT: Please contact our Sales Department for any information.		

Y	OPERATIONS	
	SYMBOLS	DESCRIPTIONS
02		Please pay attention to the flow direction and arrow direction of the check valve on symbol.
04		For example: when Y = 02, only allow the flow from port ② to port ① when not giving pneumatic pressure.
06		
08		IMPORTANT: Please contact the sales dept. of Winner Hydraulics Corp. for more detailed technical information.
10		
12		
32		

X	OPTIONS		
	THREADS	Ød	
08W	3/4"-16UNF-2A	Ø 12.7	
10W	7/8"-14UNF-2A	Ø 15.87	
12W	1-1/16"-12UN-2A	Ø 22.22	
16W	1-5/16"-12UN-2A	Ø 28.6	
17E	G 3/4"	Ø 23.5	
19E	3/4"-16UNF-2A	Ø 15.87	
21E	G 1"	Ø 30	
13A	M20x1.5	Ø 17.45	
20M	M20x1.5	Ø 15	

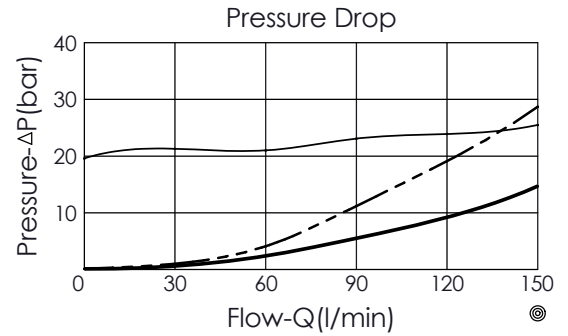
Z	PNEUMATIC PILOT PRESSURE		
E	MIN.	MAX.	
	4 bar	15 bar	

- - - ①to② With pneumatic pilot pressure
 — ②to① Without pneumatic pilot pressure



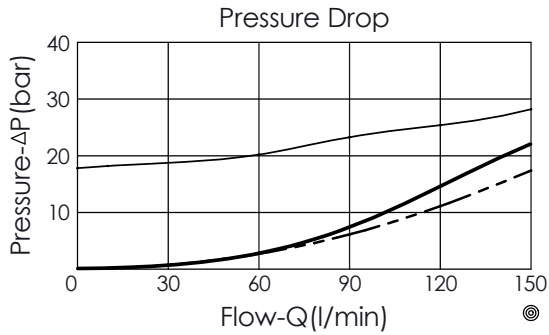
AP-16W-22-02-E

— ②to① With pneumatic pilot pressure
 - - - ①to② Without pneumatic pilot pressure
 — ②to① Without pneumatic pilot pressure



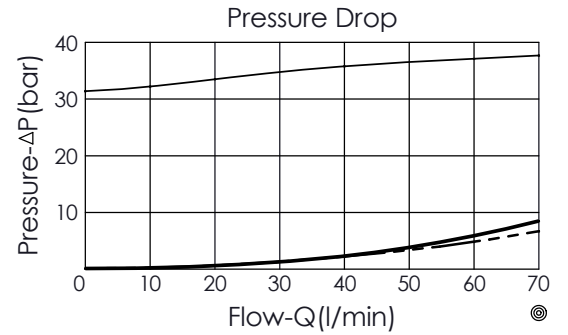
AP-16W-22-04-E

— ①to② With pneumatic pilot pressure
 — ②to① Without pneumatic pilot pressure
 - - - ①to② Without pneumatic pilot pressure



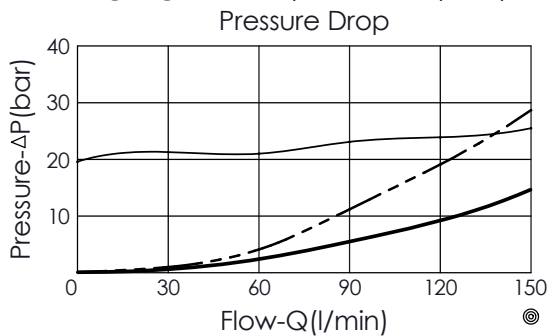
AP-12W-22-06-E

— ①to② With pneumatic pilot pressure
 — ②to① Without pneumatic pilot pressure
 - - - ①to② Without pneumatic pilot pressure



AP-17E-22-06-E

— ②to① With pneumatic pilot pressure
 - - - ①to② Without pneumatic pilot pressure
 — ②to① Without pneumatic pilot pressure



AP-12W-22-04-E

The performance curve or data is only for reference, as customers' using condition, pressure, flow, hydraulic fluid viscosity, cleanliness, temperature and so on are different, the curve or data will be different.