

COUNTERBALANCE VALVE (Vented, Atmospherically Referenced, 280 Bar Maximum Setting)

Ordering Code: **CA-11A-X-Y-Z**

Turn screw clockwise to reduce setting and release load.

Control Option: Maximum extension from locating shoulder. (Z=L Control shown)

3/8"-24UNF-2A

14.27 Hex. (9/16 inch)
Torque 9 - 10 Nm
Apply CH (5JAA097)
Plastic tamper resistant cover

22.22 Hex. (7/8 inch)

73

35.05 (Ref.)

Locating Shoulder

Pilot ③

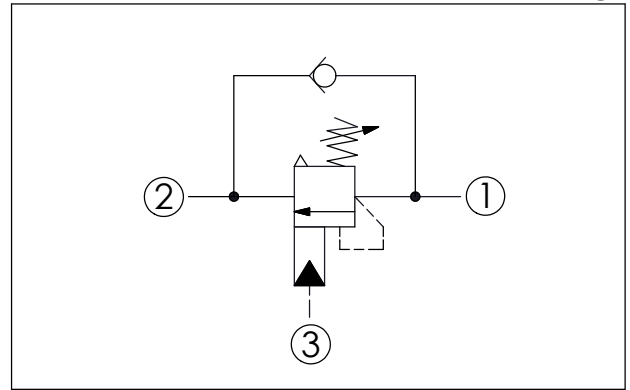
M20x1.5

Valve ②

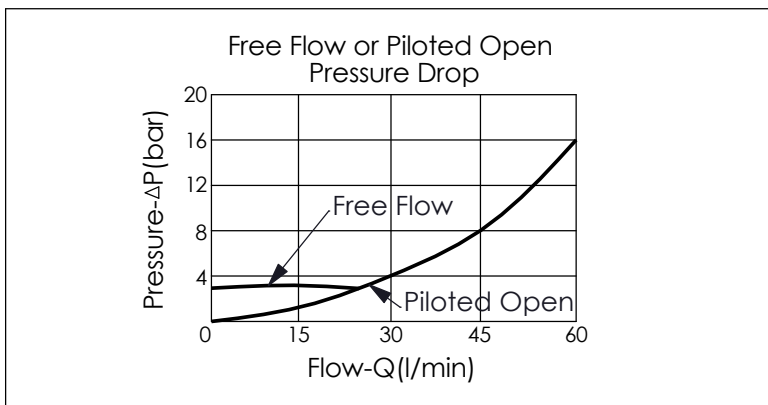
Load ①

UNIT:mm

Illustrations / detail are for reference only. Data subject to change.



| TECHNICAL DATA | | |
|---|---------------|-------|
| Max. Setting: | 280 | bar |
| Rated flow: | 60 | l/min |
| Cavity-Tooling: | 11A-3 | |
| Installation torque: | 40 - 50 | Nm |
| Weight: | 0.20 (Z=L,LP) | kg |
| <ul style="list-style-type: none"> Pressure Setting: Setting should be 1.3 times maximum load induced pressure. (We suggest when the Max. setting pressure is 280 bar, the load pressure has to be lower than 215 bar.) Approximately 1 drop (0.07 cc) of fluid will pass from the pilot area to the vented spring chamber every 4000 cycles. | | |



| Y | SPRINGS | |
|---|--|----------------------------|
| | ADJUSTMENT RANGES(2.8 bar Cracking Pressure) | |
| H | 70 - 280 bar | (210 bar Standard Setting) |
| I | 25 - 105 bar | (70 bar Standard Setting) |

| X | PILOT RATIO | |
|----|-------------|---------------------|
| 3A | 1 : 1 | (with sealed pilot) |
| 3C | 3 : 1 | (with sealed pilot) |

| Z | OPTIONS | |
|----|---|--|
| L | Leakproof hex. socket screw. | |
| LP | Leakproof hex. socket screw. With stainless steel external metal components | |
| C | Stainless Steel Tamper Resistant Cover. | |
| K | Handknob with Lock Knob. (Order Code: 6ZAK001) | |
| T | Three-winged Handknob Kit. | |