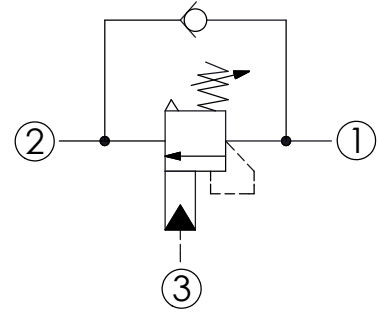
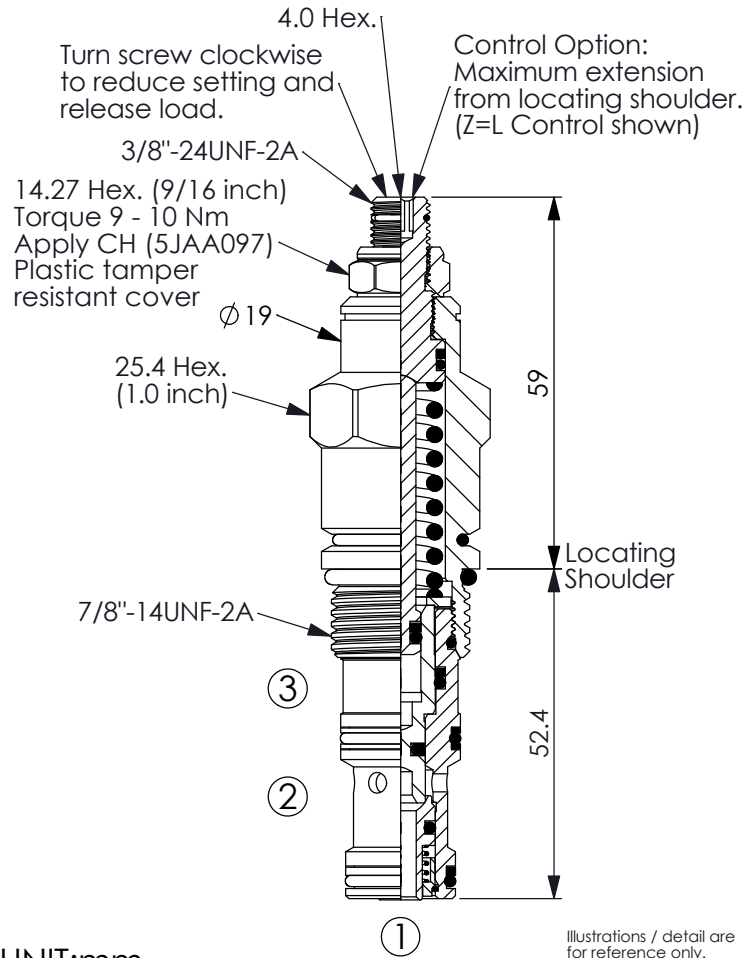


## COUNTERBALANCE VALVE

(Vented, Atmospherically Referenced, 280 Bar Maximum Setting)

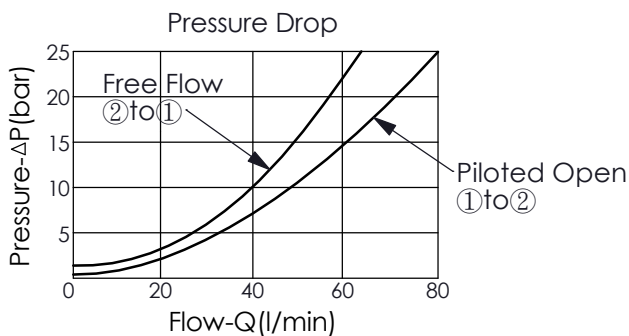
Ordering Code: **CA-10WB-X-Y-Z**



### TECHNICAL DATA

Max. Setting:	280	bar
Rated flow:	60	l/min
Cavity-Tooling:	10WB-3	
Installation torque:	35 - 45	Nm
Weight:	0.22 (Z=L)	kg

- Pressure Setting:  
Setting should be 1.3 times maximum load induced pressure.  
(We suggest when the Max. setting pressure is 280 bar, the load pressure has to be lower than 215 bar.)
- Approximately 1 drop (0.07 cc) of fluid will pass from the pilot area to the vented spring chamber every 4000 cycles.



### X PILOT RATIO

**3C** 3 : 1 (with sealed pilot)

**Y**

### SPRINGS

ADJUSTMENT RANGES(2 bar Cracking Pressure)

**H**

105 - 280 bar (210 bar Standard Setting)

**I**

20 - 160 bar (70 bar Standard Setting)

**Z**

### OPTIONS

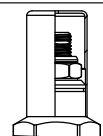
**L**

Leakproof hex. socket screw.



**C**

Stainless Steel Tamper Resistant Cover.



**CB**

Plastic Tamper Resistant Cover  
(Order Code:5JAA093)

