

## COUNTERBALANCE VALVE (Vented, Atmospherically Referenced, 420 Bar Maximum Setting)

Ordering Code: **CA-11A-X-Y-Z**

Turn screw clockwise to reduce setting and release load.

Control Option: Maximum extension from locating shoulder. (Z=L Control shown)

14.27 Hex. (9/16 inch)  
Torque 9 - 10 Nm  
Apply CH (5JAA097)  
Plastic tamper resistant cover

22.22 Hex. (7/8 inch)

73

35.05 (Ref.)

Locating Shoulder

Pilot ③

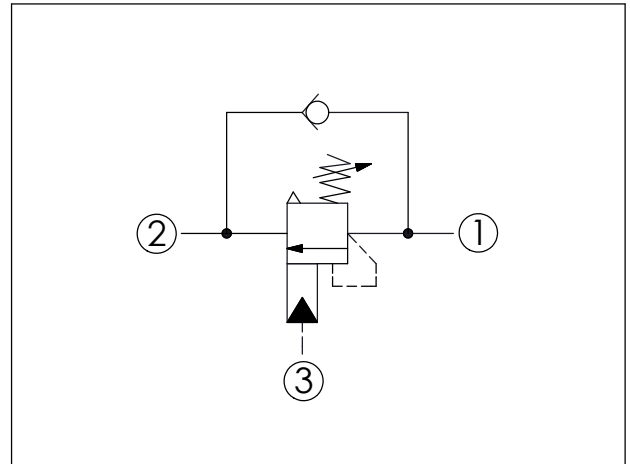
M20x1.5

Valve ②

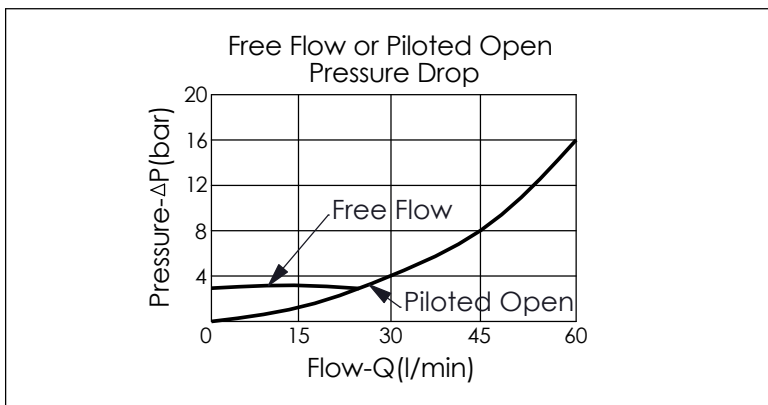
Load ①

UNIT:mm

Illustrations / detail are for reference only. Data subject to change.



TECHNICAL DATA		
Max. Setting:	420	bar
Rated flow:	60	l/min
Cavity-Tooling:	11A-3	
Installation torque:	40 - 50	Nm
Weight:	0.20 (Z=L)	kg
<ul style="list-style-type: none"> <li>Pressure Setting: Setting should be 1.3 times maximum load induced pressure. (We suggest when the Max. setting pressure is 420 bar, the load pressure has to be lower than 320 bar.)</li> <li>Approximately 1 drop (0.07 cc) of fluid will pass from the pilot area to the vented spring chamber every 4000 cycles.</li> </ul>		



X	PILOT RATIO	
3B	2 : 1 (with sealed pilot)	
3E	5 : 1 (with sealed pilot)	
3J	10: 1 (with sealed pilot)	

Y	SPRINGS	
	ADJUSTMENT RANGES(2.8 bar Cracking Pressure)	
F	70 - 175 bar (140 bar Standard Setting)	
G	140 - 420 bar (280 bar Standard Setting)	

Z	OPTIONS	
L	Leakproof hex. socket screw.	
C	Stainless Steel Tamper Resistant Cover.	
CB	Plastic Tamper Resistant Cover (Order Code:5JAA093)	