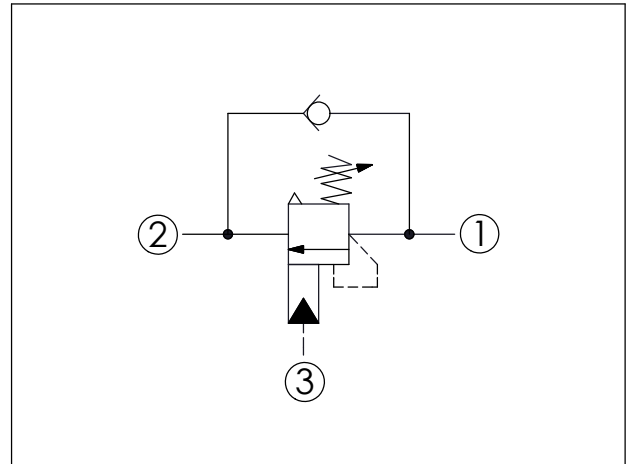
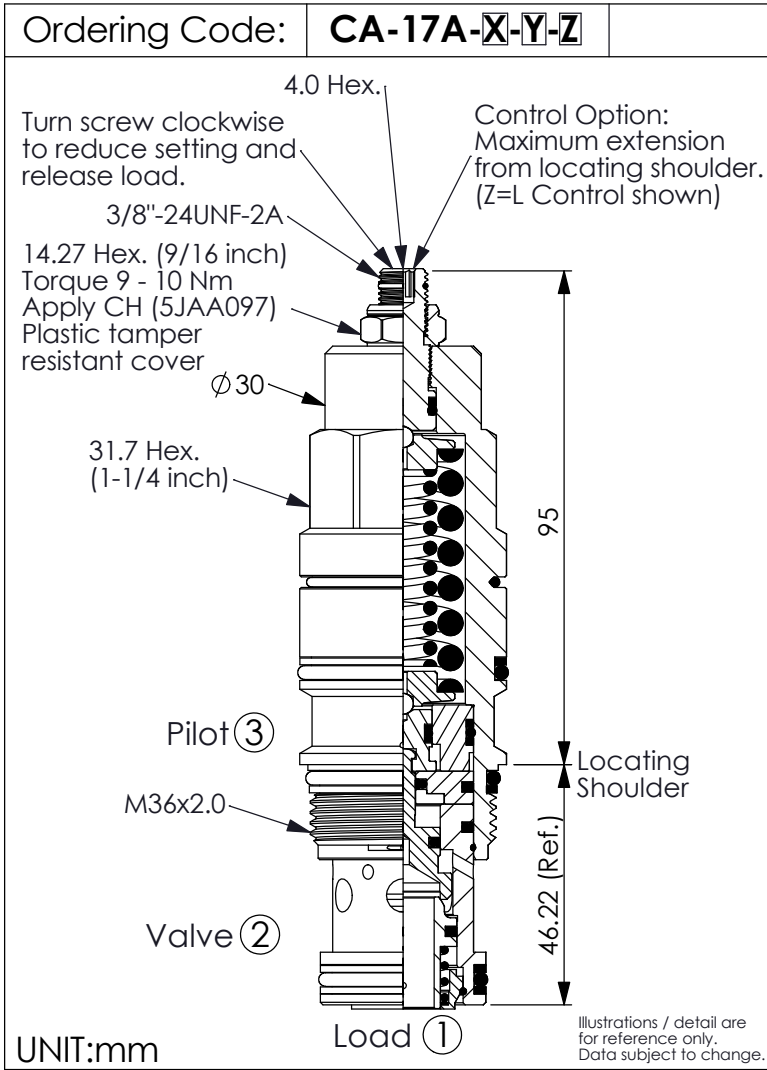
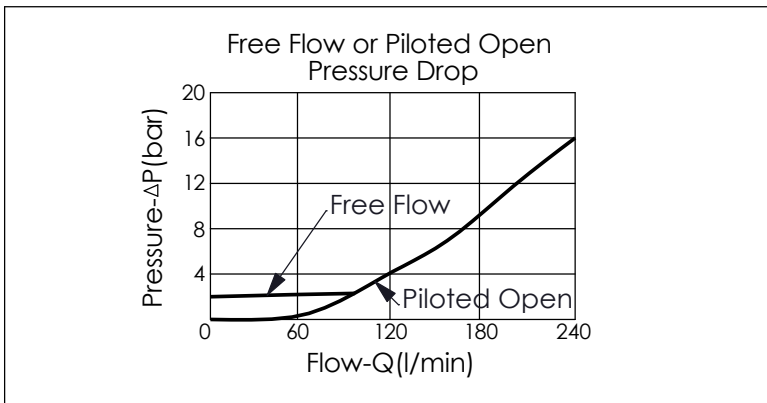


## COUNTERBALANCE VALVE (Vented, Atmospherically Referenced, 420 Bar Maximum Setting)



TECHNICAL DATA		
Max. Setting:	420	bar
Rated flow:	240	l/min
Cavity-Tooling:	17A-3	
Installation torque:	200 - 215	Nm
Weight:	0.74	kg
<ul style="list-style-type: none"> <li>Pressure Setting: Setting should be 1.3 times maximum load induced pressure. (We suggest when the Max. setting pressure is 420 bar, the load pressure has to be lower than 320 bar.)</li> <li>Approximately 1 drop (0.07 cc) of fluid will pass from the pilot area to the vented spring chamber every 4000 cycles.</li> </ul>		



Y	SPRINGS	
	ADJUSTMENT RANGES(1.7 bar Cracking Pressure)	
F	70 - 175 bar	(140 bar Standard Setting)
G	140 - 420 bar	(280 bar Standard Setting)

X	PILOT RATIO	
3B	2 : 1	(with sealed pilot)
3E	5 : 1	(with sealed pilot)

Z	OPTIONS	
L	Leakproof hex. socket screw.	
C	Stainless Steel Tamper Resistant Cover.	
CH	Plastic Tamper Resistant Cover of General Type Hex. Nut (Order Code:5JAA097)	