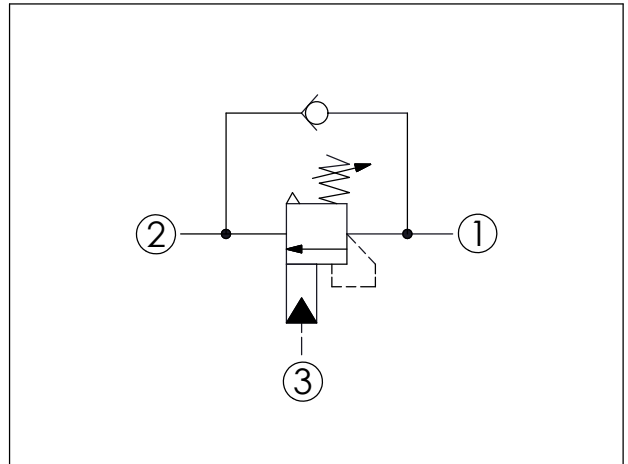
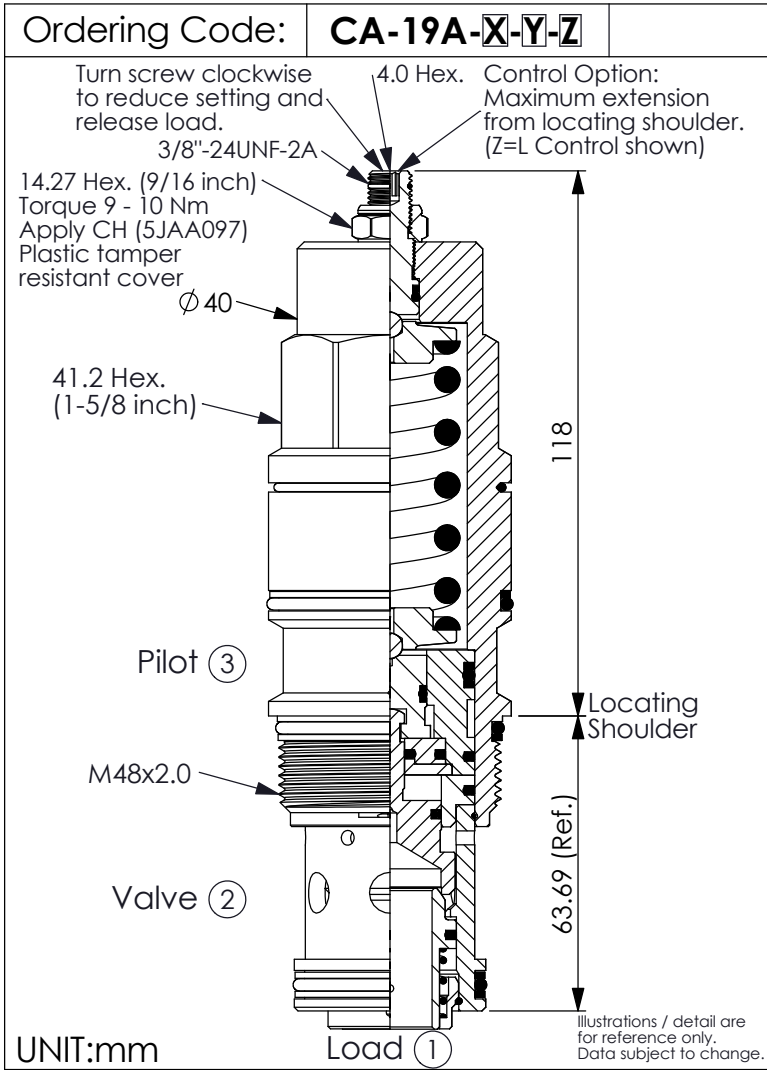
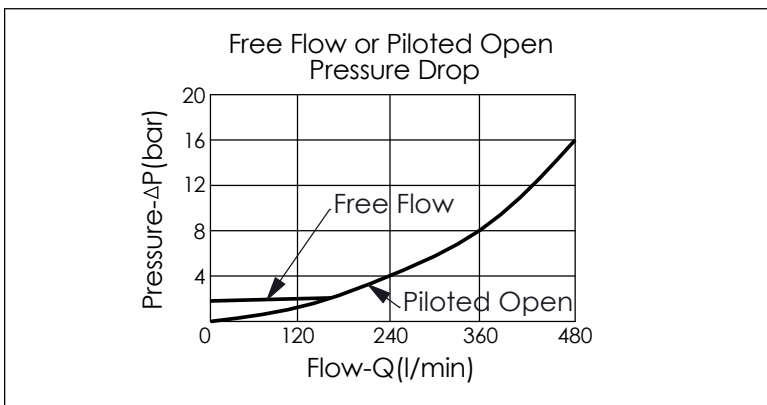


COUNTERBALANCE VALVE (Vented, Atmospherically Referenced, 420 Bar Maximum Setting)



TECHNICAL DATA		
Max. Setting:	420	bar
Rated flow:	480	l/min
Cavity-Tooling:	19A-3 (19AB-3)	
Installation torque:	465 - 500	Nm
Weight:	1.62	kg
<ul style="list-style-type: none"> Pressure Setting: Setting should be 1.3 times maximum load induced pressure. (We suggest when the Max. setting pressure is 420 bar, the load pressure has to be lower than 320 bar.) Approximately 1 drop (0.07 cc) of fluid will pass from the pilot area to the vented spring chamber every 4000 cycles. 		



X	PILOT RATIO	
3B	2 : 1 (with sealed pilot)	
3E	5 : 1 (with sealed pilot)	

Y	SPRINGS	
	ADJUSTMENT RANGES (1.5 bar Cracking Pressure)	
F	70 - 175 bar (140 bar Standard Setting)	
G	140 - 420 bar (280 bar Standard Setting)	

Z	OPTIONS	
L	Leakproof hex. socket screw.	
C	Stainless Steel Tamper Resistant Cover.	
CH	Plastic Tamper Resistant Cover of General Type Hex. Nut (Order Code:5JAA097)	