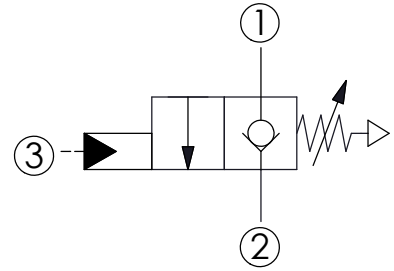
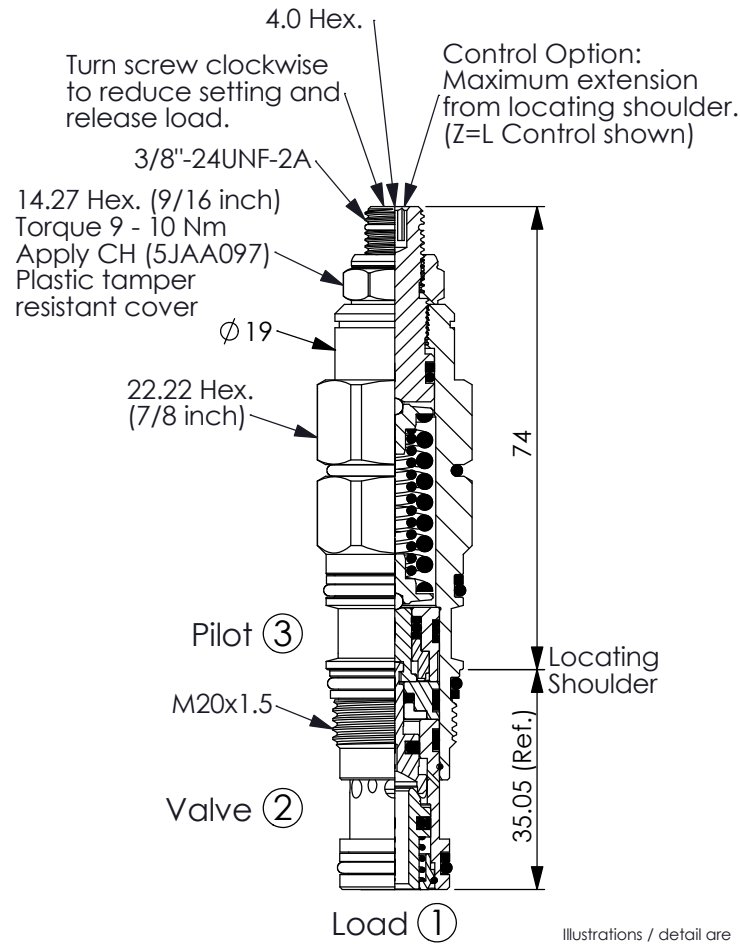
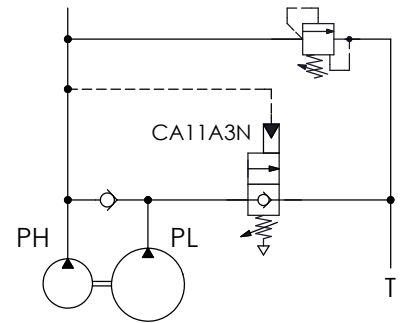


FULLY BALANCED, LOAD CONTROL VALVE (Vented, Atmospherically Referenced, Without Relief Function)

Ordering Code: **CA-11A-X-Y-Z**



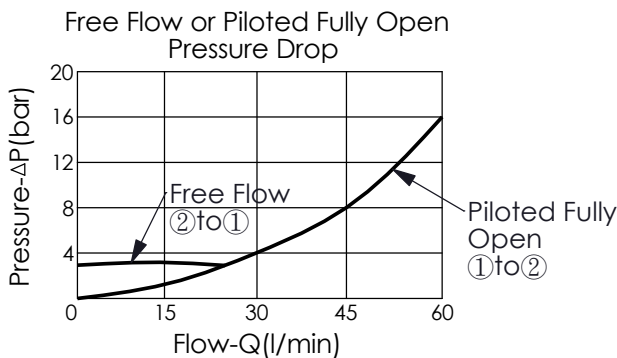
Application Example



TECHNICAL DATA

Max. Operating Pressure:	350 bar
Rated flow:	60 l/min
Cavity-Tooling:	11A-3
Installation torque:	40 - 50 Nm
Weight:	0.20 (Z=L) kg

· Approximately 1 drop (0.07 cc) of fluid will pass from the pilot area to the vented spring chamber every 4000 cycles.



X OPERATION

3N with sealed pilot
Atmospherically Referenced

Y


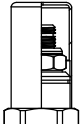
SPRINGS

PILOT ADJUSTMENT RANGS

1050	20 - 105 bar (70 bar Standard Setting)
2100	35 - 210 bar (70 bar Standard Setting)

Z

OPTIONS

L	Leakproof hex. socket screw.	
C	Stainless Steel Tamper Resistant Cover.	
CB	Plastic Tamper Resistant Cover (Order Code:5JAA093)	