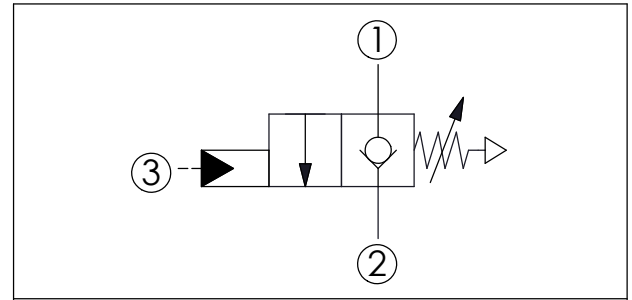
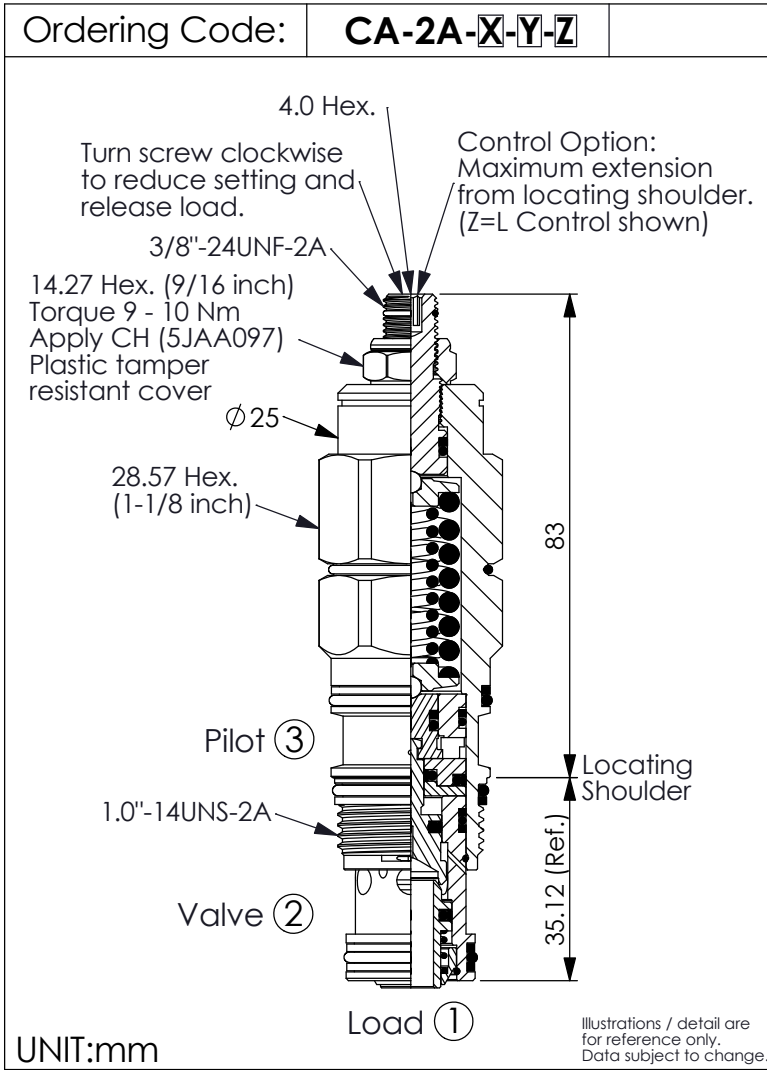
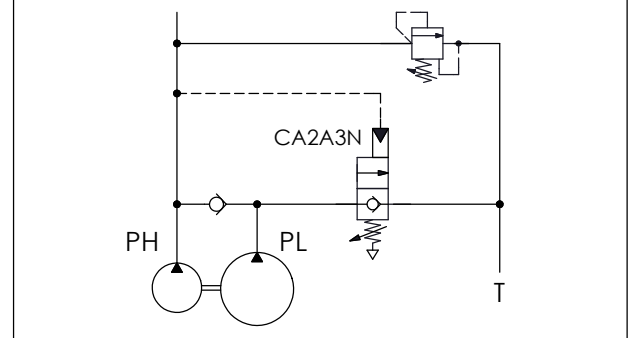


## FULLY BALANCED, LOAD CONTROL VALVE (Vented, Atmospherically Referenced, Without Relief Function)



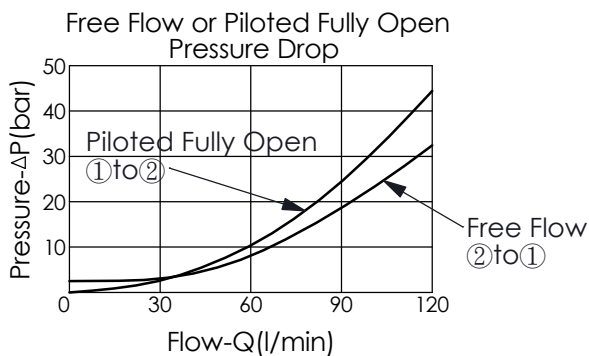
Application Example



### TECHNICAL DATA

Max. Operating Pressure:	350	bar
Rated flow:	120	l/min
Cavity-Tooling:	2A-3	
Installation torque:	60 - 70	Nm
Weight:	0.36 (Z=L)	kg

• Approximately 1 drop (0.07 cc) of fluid will pass from the pilot area to the vented spring chamber every 4000 cycles.



X	OPERATION	
3N	with sealed pilot	Atmospherically Referenced

Y	SPRINGS	
	PILOT ADJUSTMENT RANGS	
1050	20 - 105 bar (70 bar Standard Setting)	
2100	35 - 210 bar (70 bar Standard Setting)	

Z	OPTIONS	
L	Leakproof hex. socket screw.	
C	Stainless Steel Tamper Resistant Cover.	
CB	Plastic Tamper Resistant Cover (Order Code:5JAA098)	