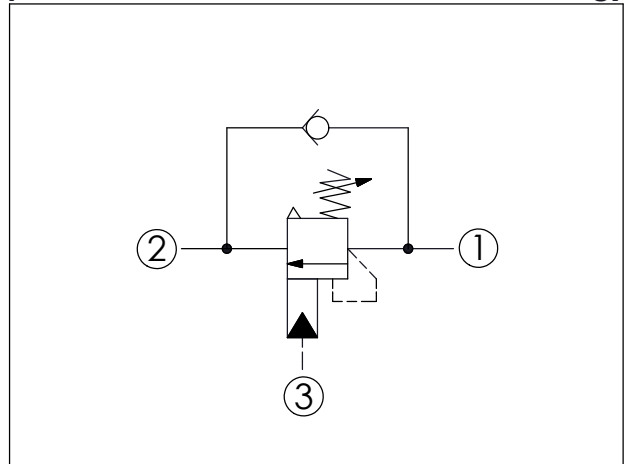
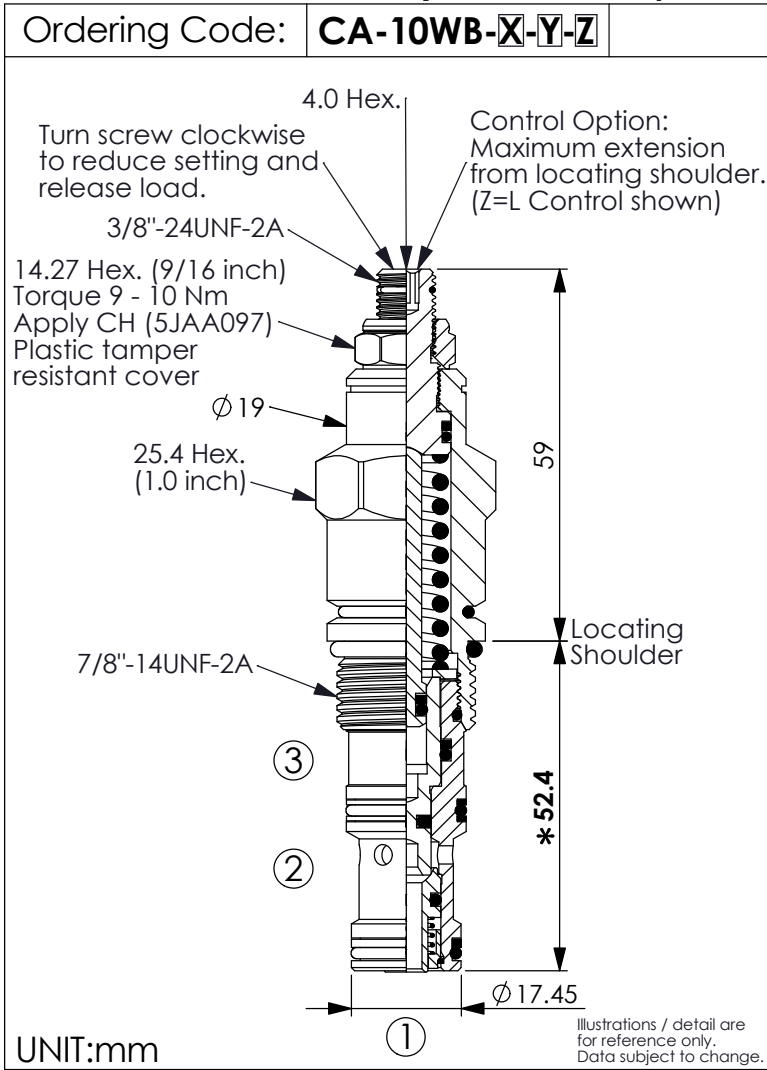
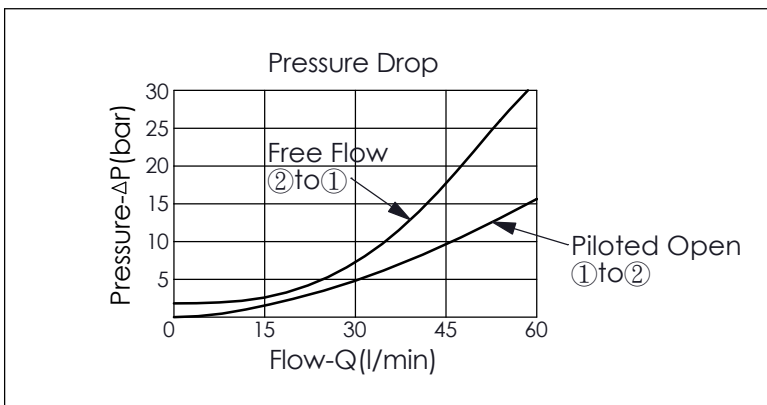


## COUNTERBALANCE VALVE (Vented, Atmospherically Referenced, 350 Bar Maximum Setting)



TECHNICAL DATA		
Max. Setting:	350	bar
Rated flow:	60	l/min
Cavity-Tooling:	10WB-3	
Installation torque:	35 - 45	Nm
Weight:	0.22 (Z=L)	kg
<ul style="list-style-type: none"> <li>Pressure Setting: Setting should be 1.3 times maximum load induced pressure. (We suggest when the Max. setting pressure is 350 bar, the load pressure has to be lower than 270 bar.)</li> <li>Approximately 1 drop (0.07 cc) of fluid will pass from the pilot area to the vented spring chamber every 4000 cycles.</li> </ul>		



X	PILOT RATIO	
3E	5 : 1 (with sealed pilot)	

Y	SPRINGS	
	ADJUSTMENT RANGES(2 bar Cracking Pressure)	
J	210 - 350 bar	(210 bar Standard Setting)
K	35 - 245 bar	(70 bar Standard Setting)

Z	OPTIONS	
L	Leakproof hex. socket screw.	
CB	Plastic Tamper Resistant Cover (Order Code:5JAA093)	