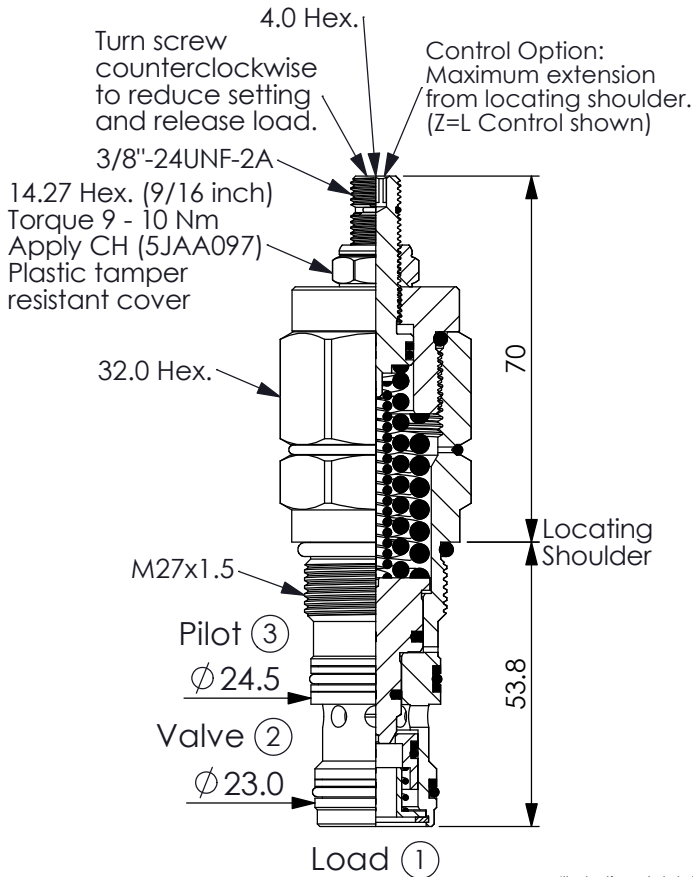


COUNTERBALANCE VALVE

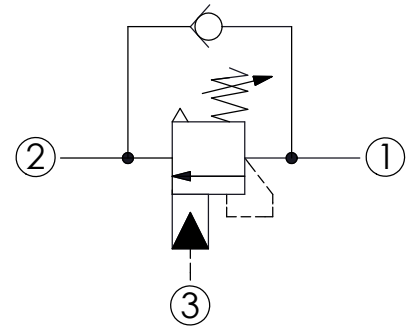
(Vented, Atmospherically Referenced, 350 Bar Maximum Setting)

Ordering Code: **CA-27M-X-Y-Z**



UNIT:mm

Illustrations / detail are for reference only. Data subject to change.

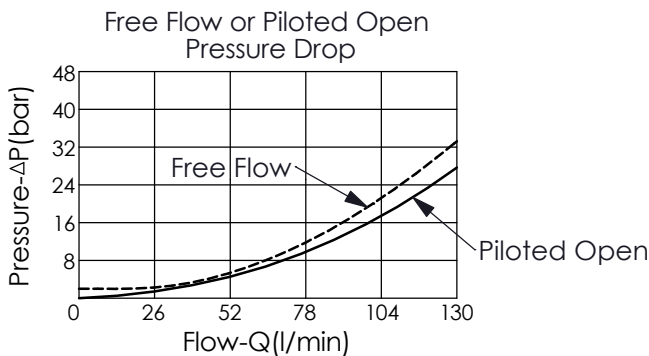


TECHNICAL DATA

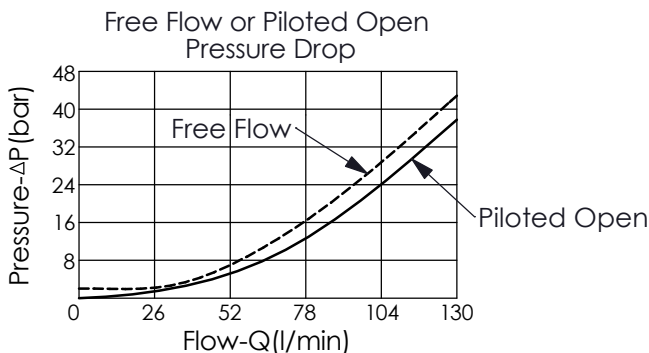
Max. Setting:	350	bar
Rated flow:	130	l/min
Cavity-Tooling:	27M-3	
Installation torque:	50 - 60	Nm
Weight:	0.424	kg

Pressure Setting:
Setting should be 1.3 times maximum load induced pressure.

X:3D



X:3H



X PILOT RATIO

3D	4 : 1 (with sealed pilot)
3H	8 : 1 (with sealed pilot)

Z OPTIONS

L	Leakproof hex. socket screw.	
CH	Plastic Tamper Resistant Cover of General Type Hex. Nut (Order Code:5JAA097)	

Y SPRINGS

ADJUSTMENT RANGES(2 bar Cracking Pressure)

J 200 to 350 bar (210 bar Standard Setting)