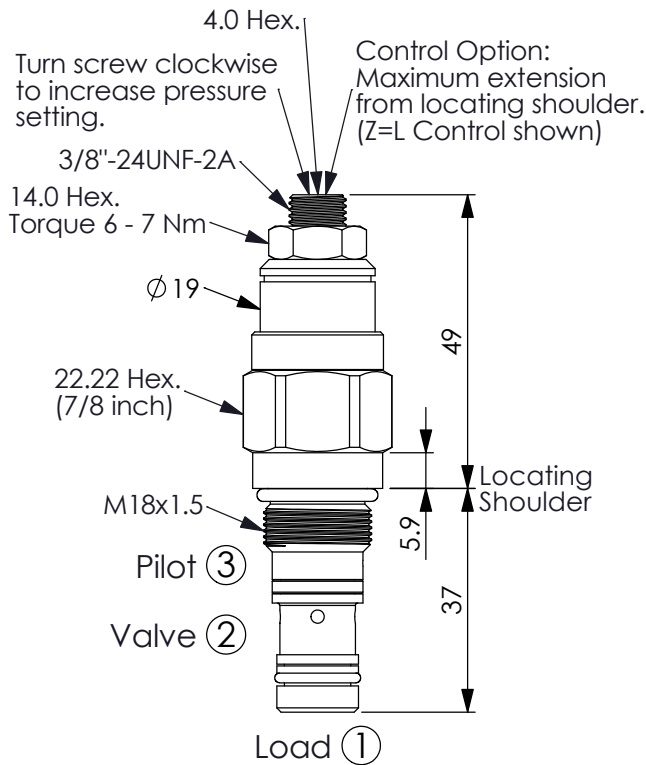


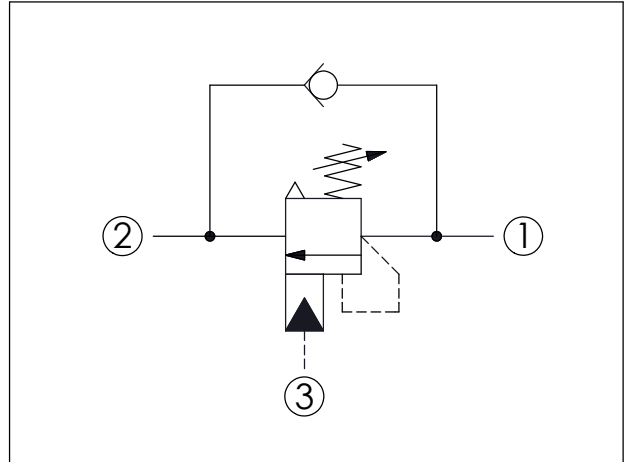
COUNTERBALANCE VALVE (Vented, Atmospherically Referenced, 420 Bar Maximum Setting)

Ordering Code: **CA-18MS-X-Y-Z**



UNIT:mm

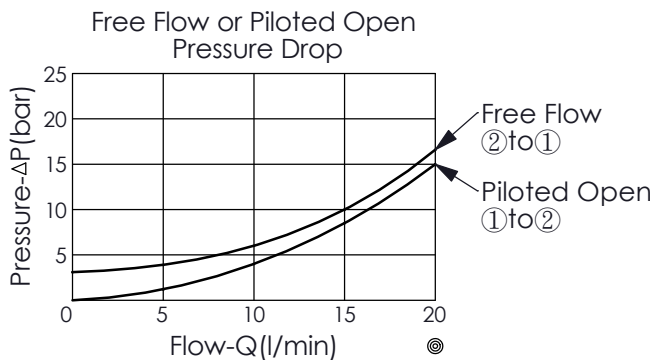
Illustrations / detail are for reference only. Data subject to change.



TECHNICAL DATA

Max. Setting:	420	bar
Rated flow:	20	l/min
Cavity-Tooling:	18MS-3	
Installation torque:	35 - 45	Nm
Weight:	0.136 (Z=L)	kg

- Pressure Setting: Setting should be 1.3 times maximum load induced pressure. (We suggest when the Max. setting pressure is 420 bar, the load pressure has to be lower than 320 bar.)
- Approximately 1 drop (0.07 cc) of fluid will pass from the pilot area to the vented spring chamber every 4000 cycles.



X	PILOT RATIO	
3D	4.5 : 1 (with sealed pilot)	

Y	SPRINGS	
	ADJUSTMENT RANGES(3.1 bar Cracking Pressure)	
G	50 - 420 bar	(280 bar Standard Setting)

Z	OPTIONS	
L	Leakproof hex. socket screw.	
C	Stainless Steel Tamper Resistant Cover.	
CB	Plastic Tamper Resistant Cover (Order Code:5JAA093)	