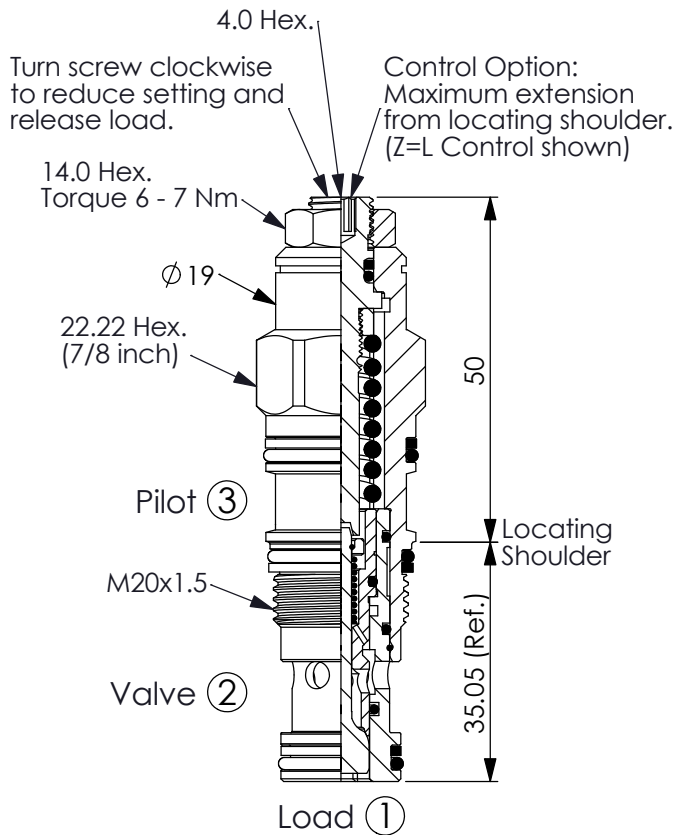


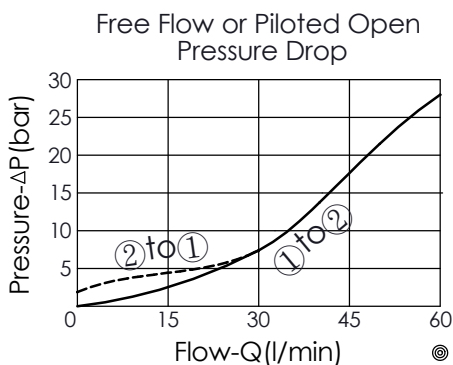
## COUNTERBALANCE VALVE

Ordering Code: **CB-11A-X-Y-Z**



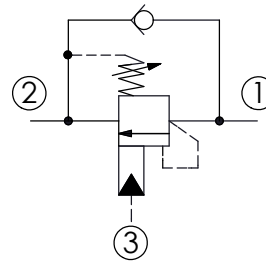
UNIT:mm

Illustrations / detail are for reference only. Data subject to change.

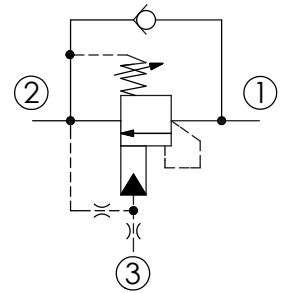


Y	SPRINGS	
	ADJUSTMENT RANGES(1.7 bar Cracking Pressure)	
H	70 - 280 bar	(210 bar Standard Setting)
I	25 - 105 bar	(70 bar Standard Setting)
SPECIAL PURPOSES(0.3 bar Cracking Pressure)		
A	70 - 280 bar	(210 bar Standard Setting)
B	25 - 105 bar	(70 bar Standard Setting)
E	16 - 55 bar	(25 bar Standard Setting)

X=33、3A、3C (standard)



X=3Q (with bleed through pilot)



### TECHNICAL DATA

Max. Setting:	280	bar
Rated flow:	60	l/min
Cavity-Tooling:	11A-3	
Installation torque:	40 - 50	Nm
Weight:	0.153 (Z=L)	kg
Pressure Setting:	Setting should be 1.3 times maximum load induced pressure. (We suggest when the Max. setting pressure is 280 bar, the load pressure has to be lower than 215 bar.)	

X	PILOT RATIO	
33	3 : 1	
3A	1.5 : 1 (with sealed pilot)	
3C	3 : 1 (with sealed pilot)	
3Q	2 : 1 (with bleed through pilot)	

Z	OPTIONS	
L	Leakproof hex. socket screw.	
LP	Leakproof hex. socket screw. With stainless steel external metal components	
CA	Plastic Tamper Resistant Cover (Order Code:5JAA094)	
T	Three-winged Handknob Kit.	