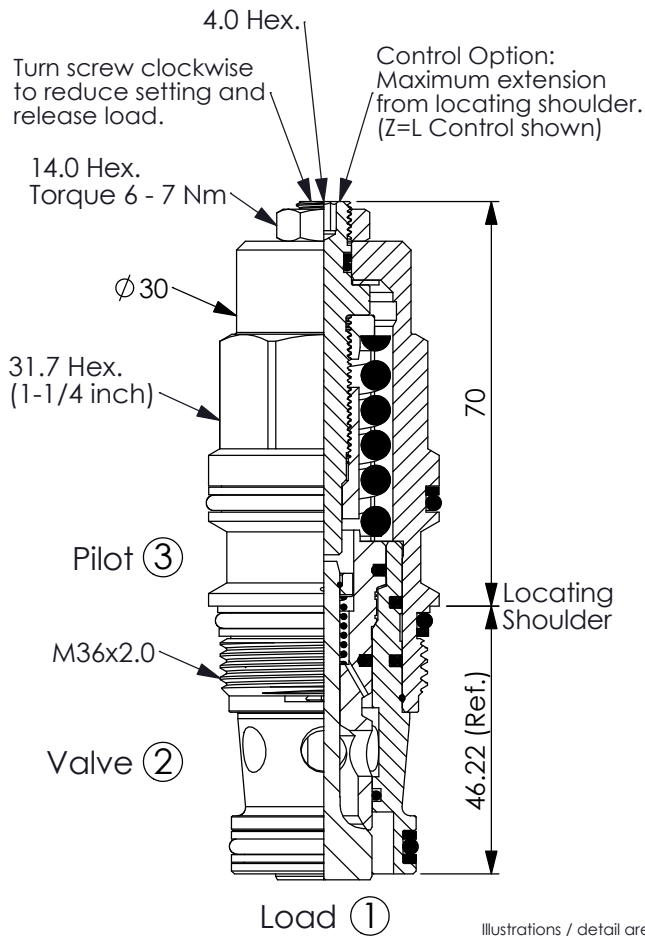


COUNTERBALANCE VALVE

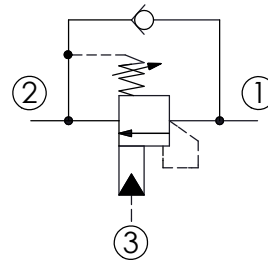
Ordering Code: **CB-17A-X-Y-Z**



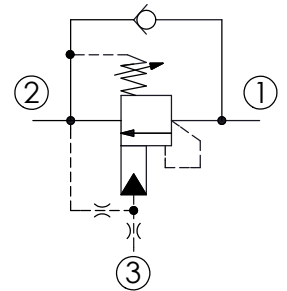
UNIT:mm

Illustrations / detail are for reference only. Data subject to change.

X=3A、3C (standard)



X=3Q (with bleed through pilot)

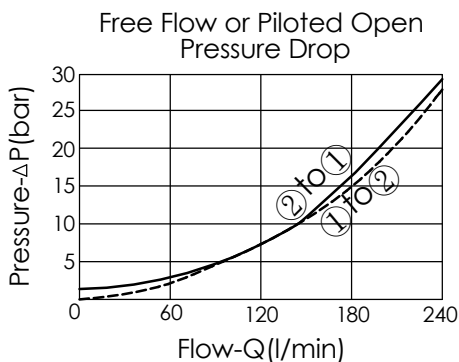


TECHNICAL DATA

Max. Setting:	280	bar
Rated flow:	240	l/min
Cavity-Tooling:	17A-3	
Installation torque:	200 - 215	Nm
Weight:	0.60 (Z=L)	kg

Pressure Setting:

Setting should be 1.3 times maximum load induced pressure. (We suggest when the Max. setting pressure is 280 bar, the load pressure has to be lower than 215 bar.)



X PILOT RATIO

3A	1.5 : 1 (with sealed pilot)
3C	3 : 1 (with sealed pilot)
3Q	2 : 1 (with bleed through pilot)

Y

SPRINGS

ADJUSTMENT RANGES(1.7 bar Cracking Pressure)

H 70 - 280 bar (210 bar Standard Setting)

I 25 - 105 bar (70 bar Standard Setting)

M 16 - 55 bar (25 bar Standard Setting)

SPECIAL PURPOSES(0.3 bar Cracking Pressure)

A 70 - 280 bar (210 bar Standard Setting)


B 25 - 105 bar (70 bar Standard Setting)

E 16 - 55 bar (25 bar Standard Setting)

Z

OPTIONS

L Leakproof hex. socket screw. 

LP Leakproof hex. socket screw. With stainless steel external metal components 

C Stainless Steel Tamper Resistant Cover. 