

## COUNTERBALANCE VALVE

Ordering Code: **CB-19A-X-Y-Z**

7/32" (5.55) Hex.  
Turn screw clockwise to reduce setting and release load.

Control Option:  
Maximum extension from locating shoulder.  
(Z=L Control shown)

19.0 Hex.  
Torque 9 - 10 Nm

Ø 40

41.2 Hex.  
(1-5/8 inch)

Pilot ③

M48x2.0

Valve ②

Load ①

Locating Shoulder

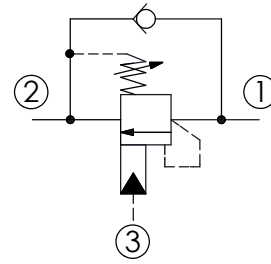
89

63.69 (Ref.)

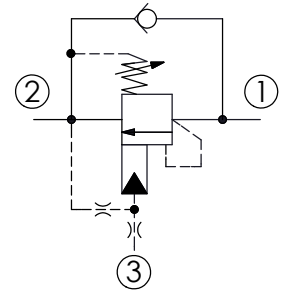
UNIT:mm

Illustrations / detail are for reference only.  
Data subject to change.

**X=3A · 3C  
(standard)**



**X=3Q (with bleed through pilot)**

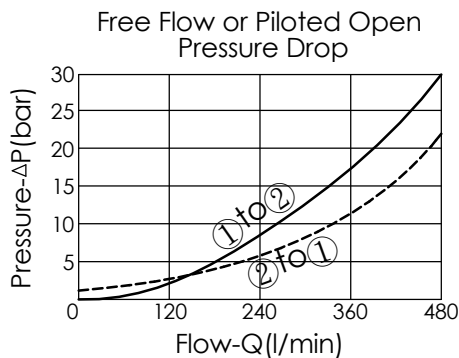


### TECHNICAL DATA

Max. Setting:	280	bar
Rated flow:	480	l/min
Cavity-Tooling:	19A-3 (19AB-3)	
Installation torque:	465 - 500	Nm
Weight:	1.40 (Z=L)	kg

### Pressure Setting:

Setting should be 1.3 times maximum load induced pressure.  
(We suggest when the Max. setting pressure is 280 bar, the load pressure has to be lower than 215 bar.)



### X PILOT RATIO

<b>3A</b>	1.5 : 1 (with sealed pilot)
<b>3C</b>	3 : 1 (with sealed pilot)
<b>3Q</b>	2 : 1 (with bleed through pilot)

**Y**

### SPRINGS

ADJUSTMENT RANGES (1.7 bar Cracking Pressure)

**H**

70 - 280 bar (210 bar Standard Setting)

**I**

25 - 105 bar (70 bar Standard Setting)

SPECIAL PURPOSES (0.3 bar Cracking Pressure)

**A**

70 - 280 bar (210 bar Standard Setting)

**B**

25 - 105 bar (70 bar Standard Setting)

**E**

16 - 55 bar (25 bar Standard Setting)

**Z**

### OPTIONS

**L**

Leakproof hex. socket screw.



**C**

Stainless Steel Tamper Resistant Cover.

