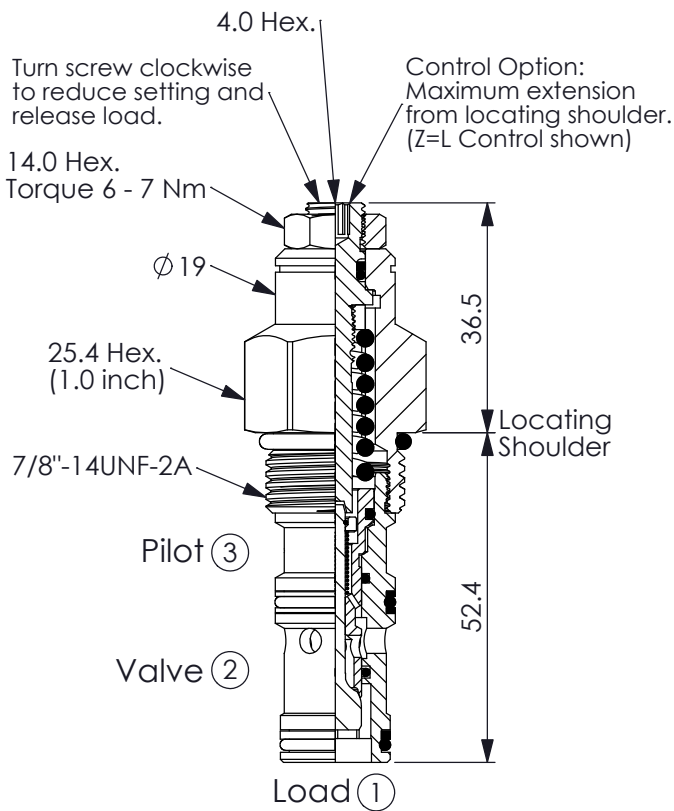


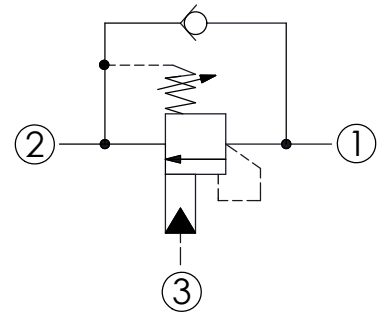
## COUNTERBALANCE VALVE

Ordering Code: **CB-10WB-X-Y-Z**



UNIT:mm

Illustrations / detail are for reference only. Data subject to change.

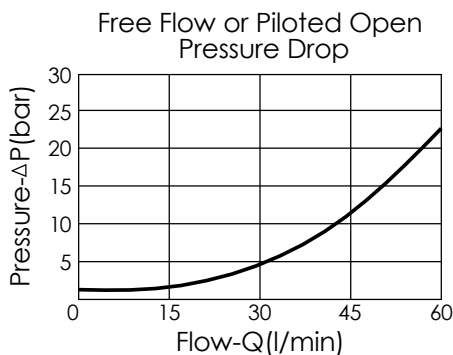


### TECHNICAL DATA

Max. Setting:	280	bar
Rated flow:	60	l/min
Cavity-Tooling:	10WB-3	
Installation torque:	35 - 45	Nm
Weight:	0.175 (Z=L)	kg

### Pressure Setting:

Setting should be 1.3 times maximum load induced pressure. (We suggest when the Max. setting pressure is 280 bar, the load pressure has to be lower than 215 bar.)



**X**

### PILOT RATIO

**3C**

3 : 1 (with sealed pilot)

**Y**

### SPRINGS

ADJUSTMENT RANGES(1.7 bar Cracking Pressure)

**H**

70 - 280 bar (210 bar Standard Setting)

**I**

25 - 105 bar (70 bar Standard Setting)

SPECIAL PURPOSES(0.3 bar Cracking Pressure)

**A**

70 - 280 bar (210 bar Standard Setting)

**B**

25 - 105 bar (70 bar Standard Setting)

**Z**

### OPTIONS

**L**

Leakproof hex. socket screw.



**CA**

Plastic Tamper Resistant Cover (Order Code:5JAA094)

