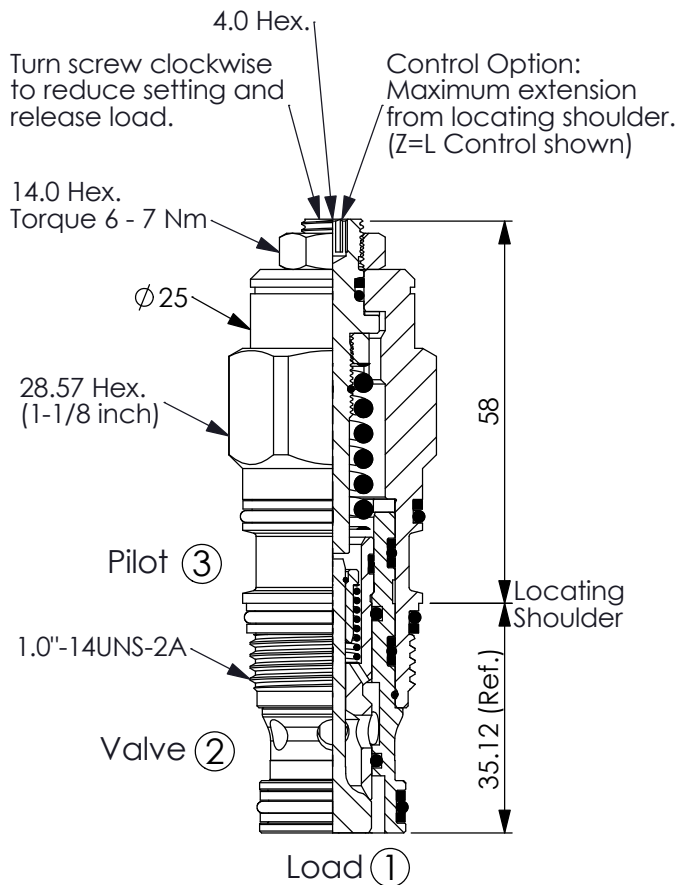


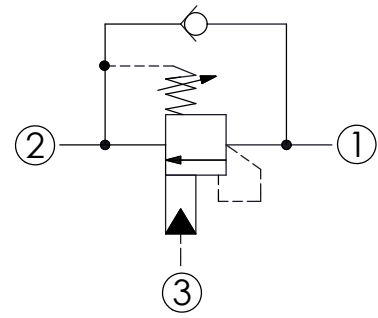
## COUNTERBALANCE VALVE

Ordering Code: **CB-2A-X-Y-Z-1**



UNIT:mm

Illustrations / detail are for reference only. Data subject to change.

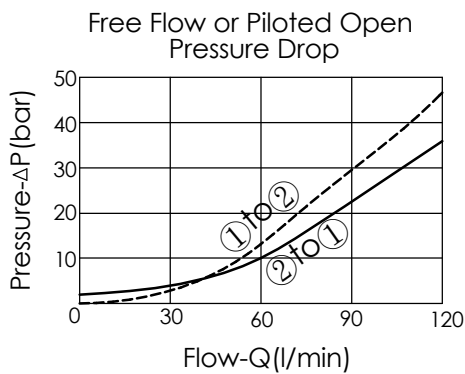


### TECHNICAL DATA

Max. Setting:	350	bar
Rated flow:	120	l/min
Cavity-Tooling:	2A-3	
Installation torque:	60 - 70	Nm
Weight:	0.279 (Z=L)	kg

### Pressure Setting:

Setting should be 1.3 times maximum load induced pressure.  
(We suggest when the Max. setting pressure is 350 bar, the load pressure has to be lower than 270 bar.)



### X PILOT RATIO

**3A** 1 : 1 (with sealed pilot)

Y	SPRINGS
	ADJUSTMENT RANGES (1.7 bar Cracking Pressure)
<b>J</b>	140 - 350 bar (210 bar Standard Setting)
<b>K</b>	70 - 175 bar (140 bar Standard Setting)
	SPECIAL PURPOSES (0.3 bar Cracking Pressure)
<b>C</b>	140 - 350 bar (210 bar Standard Setting)
<b>D</b>	70 - 175 bar (140 bar Standard Setting)

### Z OPTIONS

<b>L</b>	Leakproof hex. socket screw.	
<b>CA</b>	Plastic Tamper Resistant Cover (Order Code:5JAA099)	