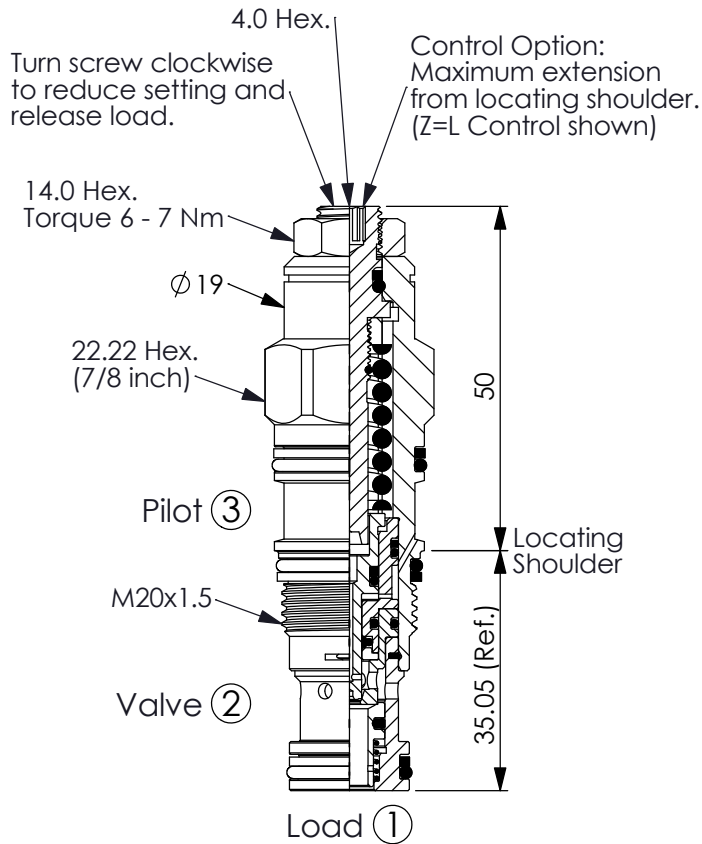


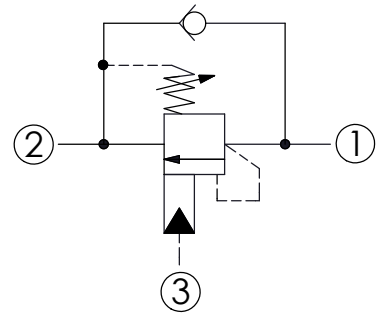
COUNTERBALANCE VALVE

Ordering Code: **CB-11A-X-Y-Z30**



UNIT:mm

Illustrations / detail are for reference only. Data subject to change.

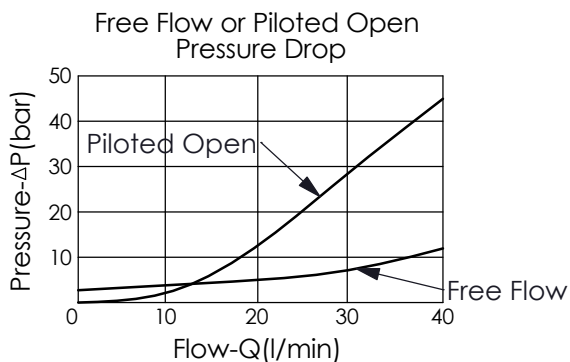


TECHNICAL DATA

Max. Setting:	280	bar
Rated flow:	30	l/min
Cavity-Tooling:	11A-3	
Installation torque:	40 - 50	Nm
Weight:	0.154 (Z=L)	kg

Pressure Setting:

Setting should be 1.3 times maximum load induced pressure. (We suggest when the Max. setting pressure is 280 bar, the load pressure has to be lower than 215 bar.)



X PILOT RATIO


3D 4.5 : 1 (with sealed pilot)

Y SPRINGS

ADJUSTMENT RANGES(1.7 bar Cracking Pressure)

H 70 - 280 bar (210 bar Standard Setting)

Z OPTIONS

L Leakproof hex. socket screw. 

CA Plastic Tamper Resistant Cover (Order Code:5JAA094) 