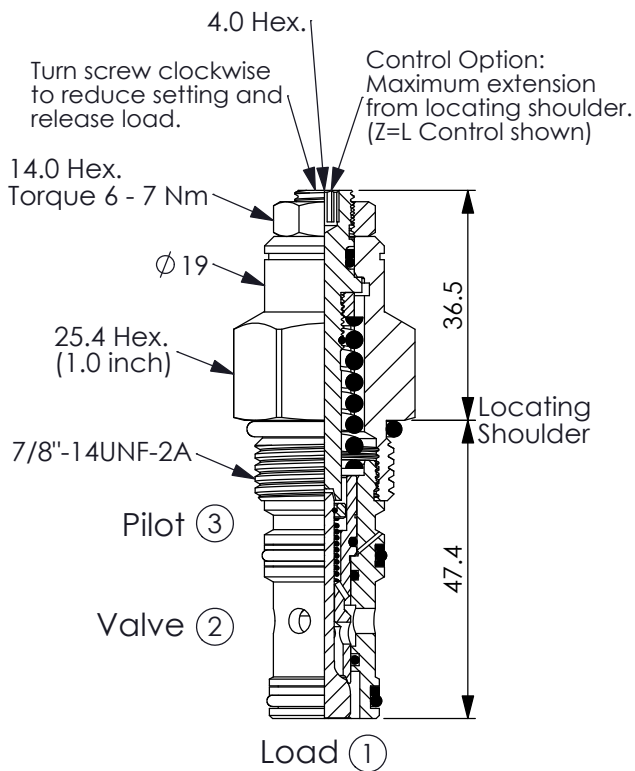


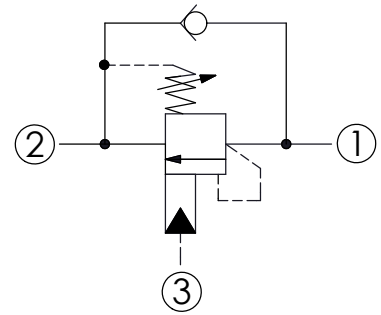
## COUNTERBALANCE VALVE

Ordering Code: **CB-10WC-X-Y-Z**



UNIT:mm

Illustrations / detail are for reference only. Data subject to change.

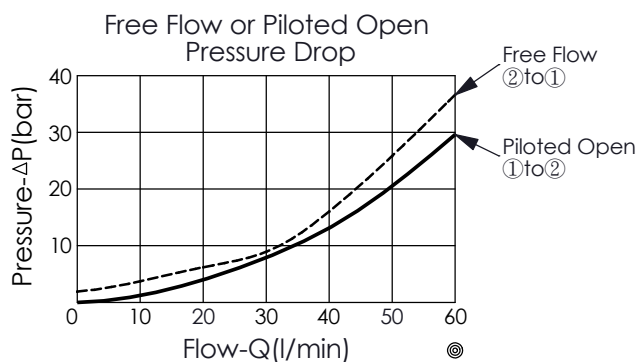


### TECHNICAL DATA

Max. Setting:	280	bar
Rated flow:	60	l/min
Cavity-Tooling:	10WC-3	
Installation torque:	35 - 45	Nm
Weight:	0.168 (Z=L)	kg

### Pressure Setting:

Setting should be 1.3 times maximum load induced pressure. (We suggest when the Max. setting pressure is 280 bar, the load pressure has to be lower than 215 bar.)



### X PILOT RATIO

**3C** 3 : 1 (with sealed pilot)

### Y SPRINGS

ADJUSTMENT RANGES (1.7 bar Cracking Pressure)

**H** 70 - 280 bar (210 bar Standard Setting)


**I** 25 - 105 bar (70 bar Standard Setting)

SPECIAL PURPOSES (0.3 bar Cracking Pressure)

**A** 70 - 280 bar (210 bar Standard Setting)

**B** 25 - 105 bar (70 bar Standard Setting)

### Z OPTIONS

**L** Leakproof hex. socket screw. 

**CA** Plastic Tamper Resistant Cover (Order Code: 5JAA094) 