

Ordering Code: **CB-11A-X-Y-Z**

4.0 Hex.
Turn screw clockwise to reduce setting and release load.

Control Option:
Maximum extension from locating shoulder.
(Z=L Control shown)

14.0 Hex.
Torque 6 - 7 Nm

19
22.22 Hex.
(7/8 inch)

50

Pilot ③

M20x1.5

Valve ②

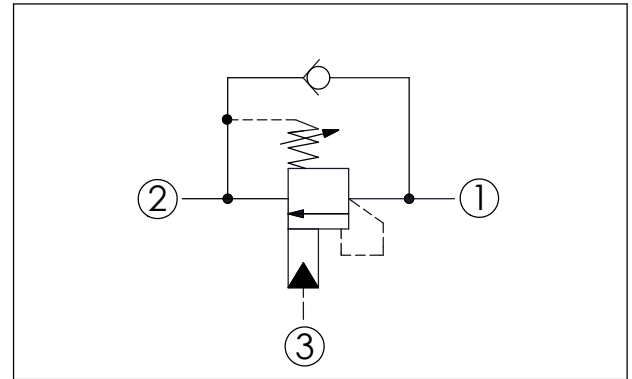
Load ①

35.05 (Ref.)

Locating Shoulder

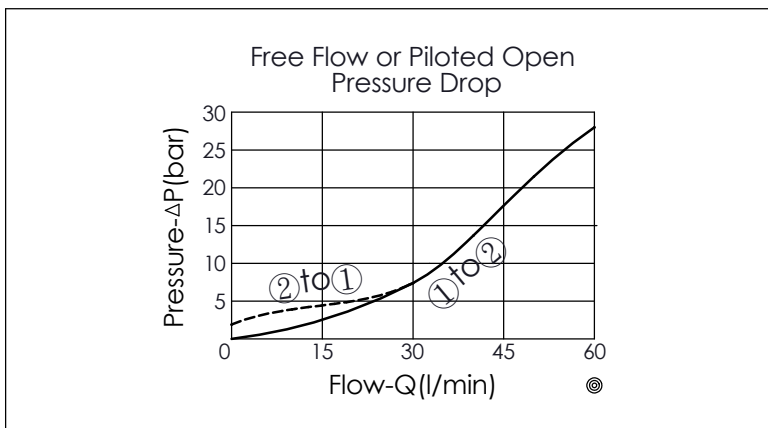
UNIT:mm

Illustrations / detail are for reference only. Data subject to change.



TECHNICAL DATA		
Max. Setting:	350	bar
Rated flow:	60	l/min
Cavity-Tooling:	11A-3	
Installation torque:	40 - 50	Nm
Weight:	0.153 (Z=L)	kg
Pressure Setting: Setting should be 1.3 times maximum load induced pressure. (We suggest when the Max. setting pressure is 350 bar, the load pressure has to be lower than 270 bar.)		

X	PILOT RATIO	
30	10 : 1	
33	3 : 1 (Only Y=J and Y=C)	
34	4.5 : 1	
3B	2.3 : 1 (with sealed pilot)	
3D	4.5 : 1 (with sealed pilot)	
3J	10 : 1 (with sealed pilot)	
3P	16 : 1 (with sealed pilot)	



Y	SPRINGS	
	ADJUSTMENT RANGES(1.7 bar Cracking Pressure)	
J	140 - 350 bar	(210 bar Standard Setting)
K	70 - 175 bar	(140 bar Standard Setting)
	SPECIAL PURPOSES(0.3 bar Cracking Pressure)	
C	140 - 350 bar	(210 bar Standard Setting)
D	70 - 175 bar	(140 bar Standard Setting)

Z	OPTIONS	
L	Leakproof hex. socket screw.	
LP	Leakproof hex. socket screw. With stainless steel external metal components	
CA	Plastic Tamper Resistant Cover (Order Code:5JAA094)	