

COUNTERBALANCE VALVE

Ordering Code: **CB-2A-X-Y-Z**

4.0 Hex.
Turn screw clockwise to reduce setting and release load.

Control Option:
Maximum extension from locating shoulder.
(Z=L Control shown)

14.0 Hex.
Torque 6 - 7 Nm

Ø25

28.57 Hex.
(1-1/8 inch)

58

Pilot ③

1.0"-14UNS-2A

Valve ②

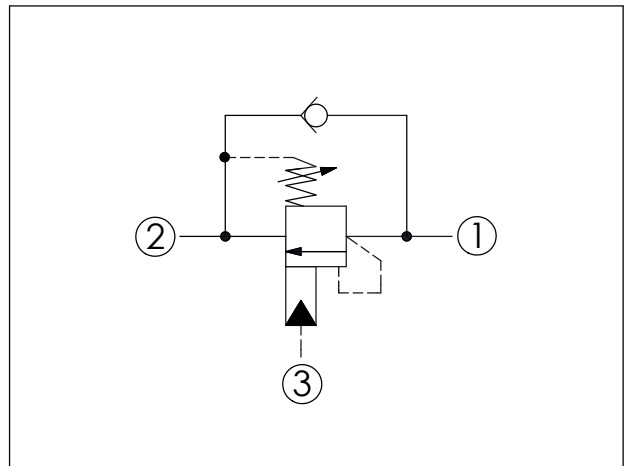
Load ①

35.12 (Ref.)

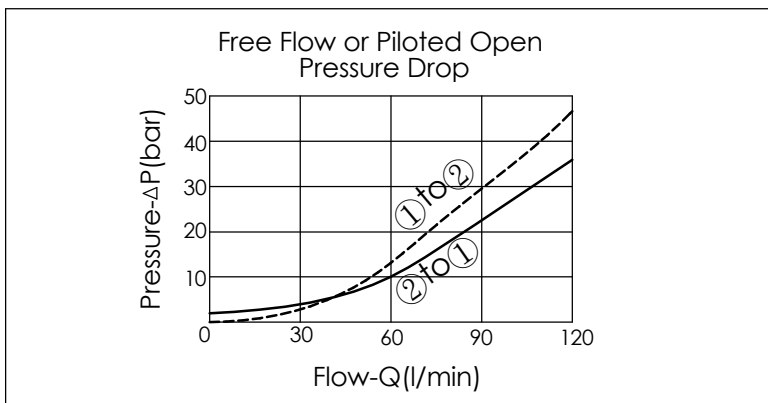
Locating Shoulder

UNIT:mm

Illustrations / detail are for reference only. Data subject to change.



TECHNICAL DATA		
Max. Setting:	350	bar
Rated flow:	120	l/min
Cavity-Tooling:	2A-3	
Installation torque:	60 - 70	Nm
Weight:	0.277 (Z=L)	kg
Pressure Setting: Setting should be 1.3 times maximum load induced pressure. (We suggest when the Max. setting pressure is 350 bar, the load pressure has to be lower than 270 bar.)		



X	PILOT RATIO	
30	10 : 1	
34	4.5 : 1	
3B	2.3 : 1 (with sealed pilot)	
3D	4.5 : 1 (with sealed pilot)	

Y	SPRINGS	
	ADJUSTMENT RANGES(1.7 bar Cracking Pressure)	
J	140 - 350 bar (210 bar Standard Setting)	
K	70 - 175 bar (140 bar Standard Setting)	
	SPECIAL PURPOSES(0.3 bar Cracking Pressure)	
C	140 - 350 bar (210 bar Standard Setting)	
D	70 - 175 bar (140 bar Standard Setting)	

Z	OPTIONS	
L	Leakproof hex. socket screw.	
LP	Leakproof hex. socket screw. With stainless steel external metal components	
CA	Plastic Tamper Resistant Cover (Order Code:5JAA099)	