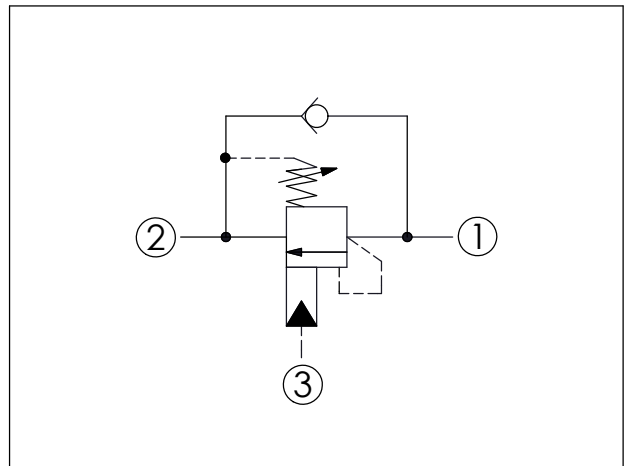
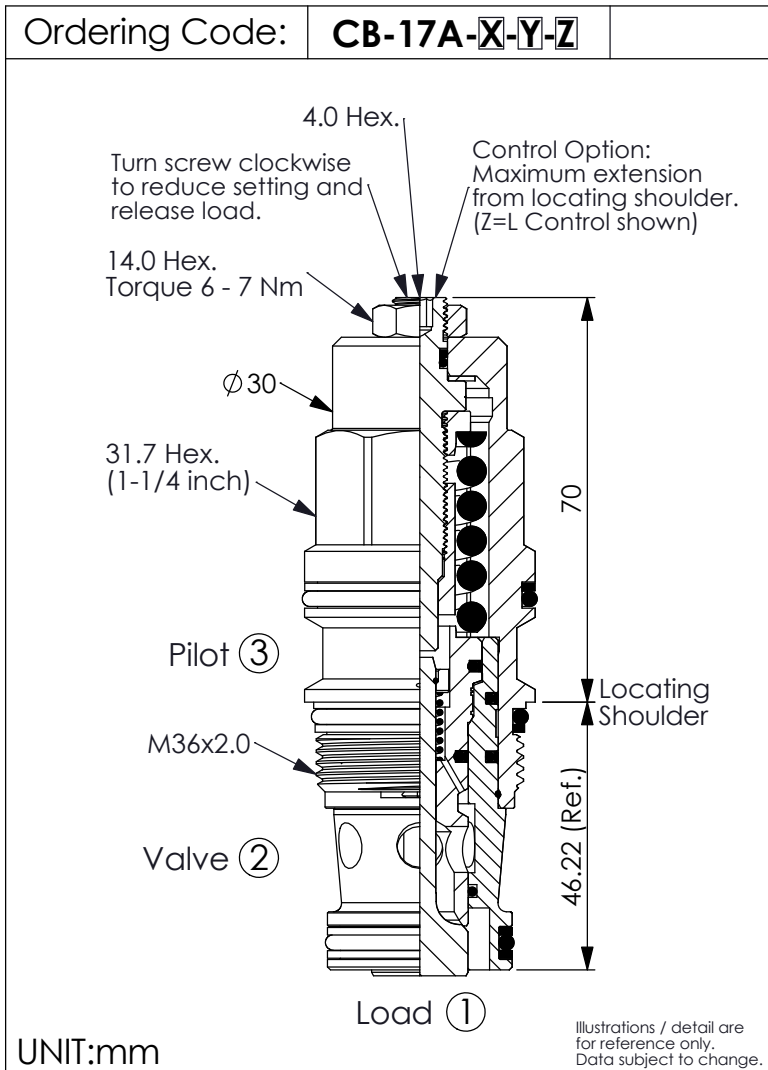


## COUNTERBALANCE VALVE

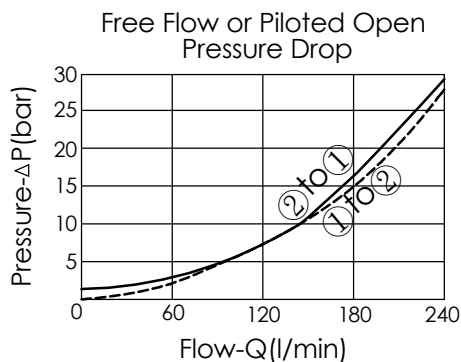


### TECHNICAL DATA

Max. Setting:	350	bar
Rated flow:	240	l/min
Cavity-Tooling:	17A-3	
Installation torque:	200 - 215	Nm
Weight:	0.60 (Z=L)	kg

### Pressure Setting:

Setting should be 1.3 times maximum load induced pressure.  
(We suggest when the Max. setting pressure is 350 bar, the load pressure has to be lower than 270 bar.)



### X PILOT RATIO

<b>3B</b>	2.3 : 1 (with sealed pilot)
<b>3D</b>	4.5 : 1 (with sealed pilot)
<b>3J</b>	10 : 1 (with sealed pilot)

### Y

### SPRINGS

ADJUSTMENT RANGES (1.7 bar Cracking Pressure)

**J** 140 - 350 bar (210 bar Standard Setting)

**K** 70 - 175 bar (140 bar Standard Setting)

**P** 20 - 105 bar (70 bar Standard Setting)

SPECIAL PURPOSES (0.3 bar Cracking Pressure)

**C** 140 - 350 bar (210 bar Standard Setting)

**D** 70 - 175 bar (140 bar Standard Setting)

**R** 20 - 105 bar (70 bar Standard Setting)

### Z

### OPTIONS

**L** Leakproof hex. socket screw.

**LP** Leakproof hex. socket screw. With stainless steel external metal components

**C** Stainless Steel Tamper Resistant Cover.