

COUNTERBALANCE VALVE

Ordering Code: **CB-19A-X-Y-Z**

Turn screw clockwise to reduce setting and release load.

19.0 Hex. Torque 9 - 10 Nm

5.55 Hex. (7/32 inch)

Control Option: Maximum extension from locating shoulder. (Z=L Control shown)

89

41.2 Hex. (1-5/8 inch)

Ø 40

Pilot ③

M48x2.0

Valve ②

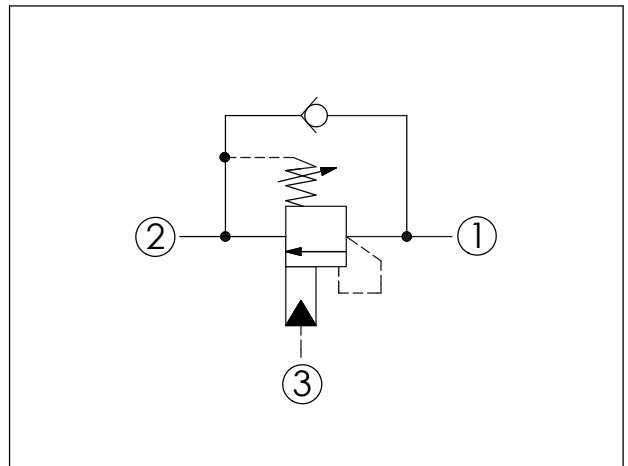
Load ①

Locating Shoulder

63.69 (Ref.)

UNIT:mm

Illustrations / detail are for reference only. Data subject to change.

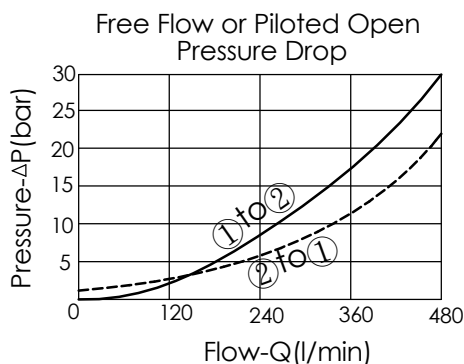


TECHNICAL DATA

Max. Setting:	350	bar
Rated flow:	480	l/min
Cavity-Tooling:	19A-3 (19AB-3)	
Installation torque:	465 - 500	Nm
Weight:	1.40 (Z=L,LP)	kg

Pressure Setting:

Setting should be 1.3 times maximum load induced pressure.
(We suggest when the Max. setting pressure is 350 bar, the load pressure has to be lower than 270 bar.)



X PILOT RATIO

3B	2.3 : 1 (with sealed pilot)
3D	4.5 : 1 (with sealed pilot)
3J	10 : 1 (with sealed pilot)

Y	SPRINGS	
	ADJUSTMENT RANGES(1.7 bar Cracking Pressure)	
J	140 - 350 bar (210 bar Standard Setting)	
K	70 - 175 bar (140 bar Standard Setting)	
	SPECIAL PURPOSES(0.3 bar Cracking Pressure)	
C	140 - 350 bar (210 bar Standard Setting)	
D	70 - 175 bar (140 bar Standard Setting)	

Z	OPTIONS	
L	Leakproof hex. socket screw.	
LP	Leakproof hex. socket screw. With stainless steel external metal components	
C	Stainless Steel Tamper Resistant Cover.	