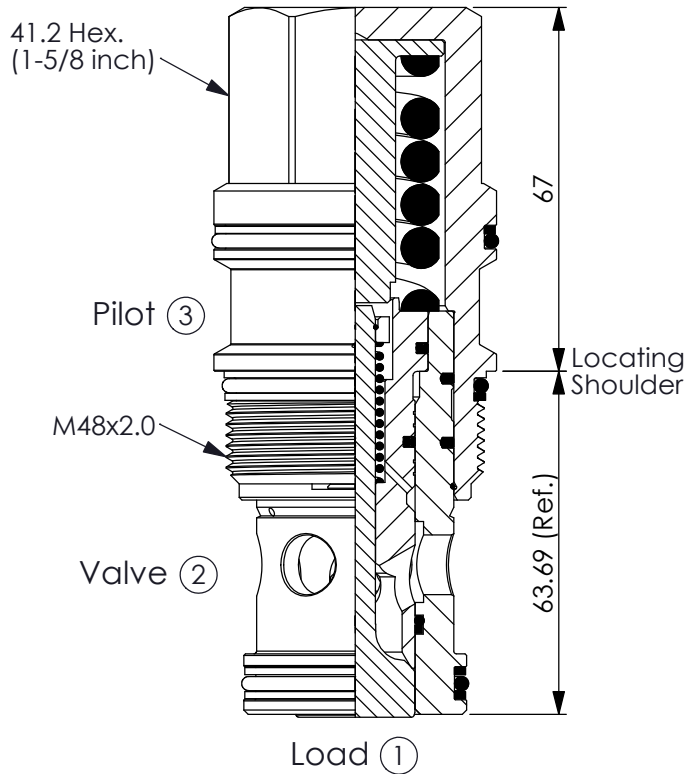
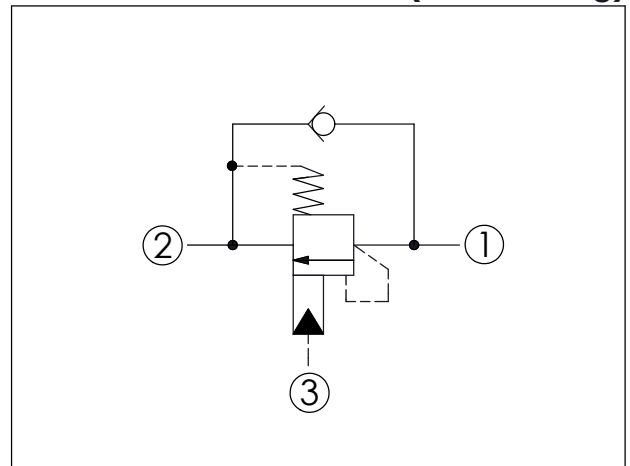


Ordering Code: **CB-19A-X-Y-Z**



UNIT:mm

Illustrations / detail are for reference only. Data subject to change.

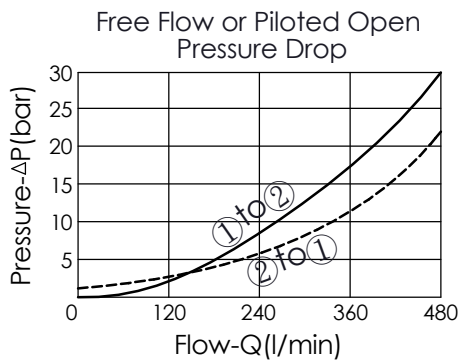


TECHNICAL DATA

Max. Setting:	350	bar
Rated flow:	480	l/min
Cavity-Tooling:	19A-3 (19AB-3)	
Installation torque:	465 - 500	Nm
Weight:	1.24	kg

Pressure Setting:

Setting should be 1.3 times maximum load induced pressure. (We suggest when the Max. setting pressure is 350 bar, the load pressure has to be lower than 270 bar.)



X	PILOT RATIO
3D	4.5 : 1 (with sealed pilot)

Y	SPRINGS	
	FIXED SETTING	
240	220 - 260 bar	
350	325 - 390 bar	

Z	OPTION
N	Non-adjustable 2.0 bar Cracking Pressure