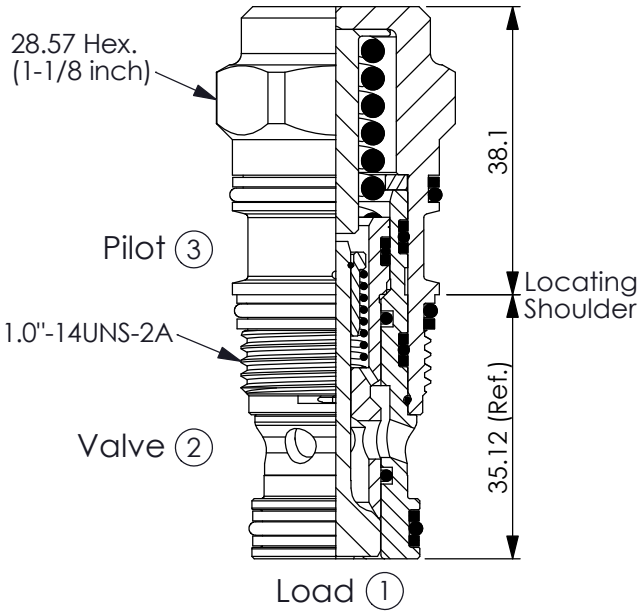


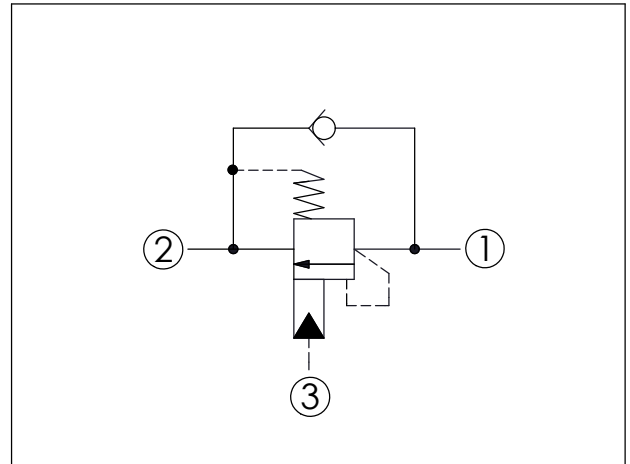
## COUNTERBALANCE VALVE (Fixed Setting)

Ordering Code: **CB-2A-X-Y-Z**



UNIT:mm

Illustrations / detail are for reference only. Data subject to change.

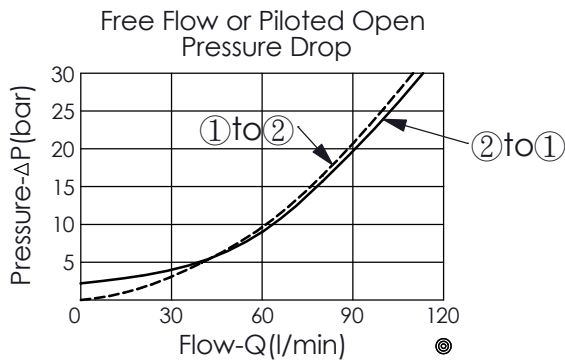


### TECHNICAL DATA

Max. Setting:	350	bar
Rated flow:	120	l/min
Cavity-Tooling:	2A-3	
Installation torque:	60 - 70	Nm
Weight:	0.233	kg

### Pressure Setting:

Setting should be 1.3 times maximum load induced pressure. (We suggest when the Max. setting pressure is 350 bar, the load pressure has to be lower than 270 bar.)



### X PILOT RATIO

**3D** 4.5 : 1 (with sealed pilot)

**Y**

### SPRINGS

FIXED SETTING

**220**

200 - 240 bar

**Z**

### OPTION

**N**

Non-adjustable  
2.0 bar Cracking Pressure