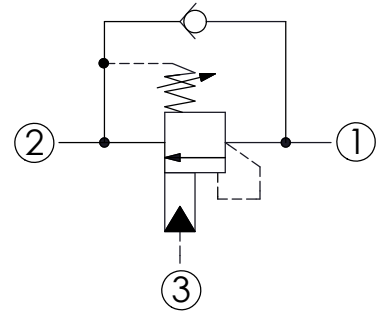
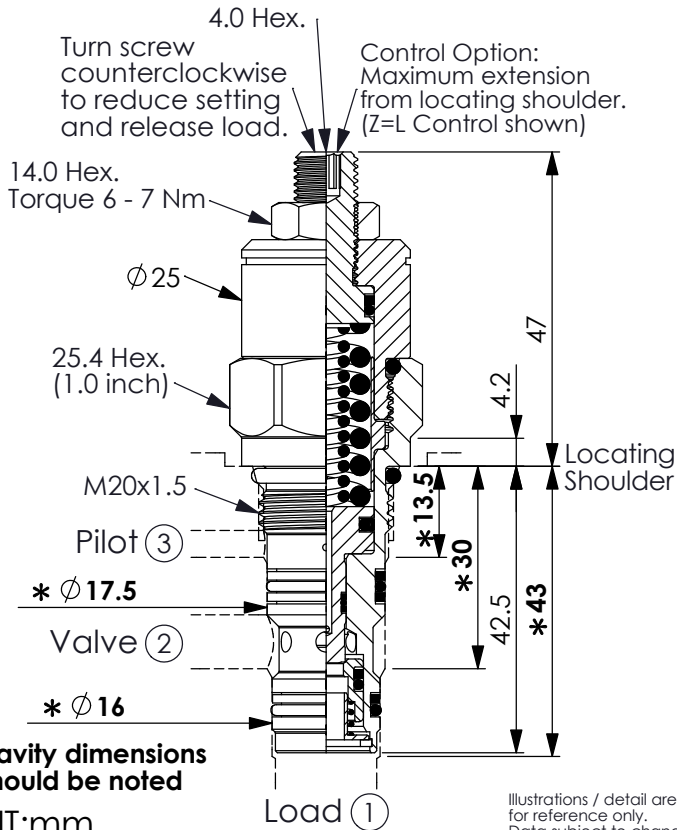


COUNTERBALANCE VALVE

Ordering Code: **CB-20MS-X-Y-Z**

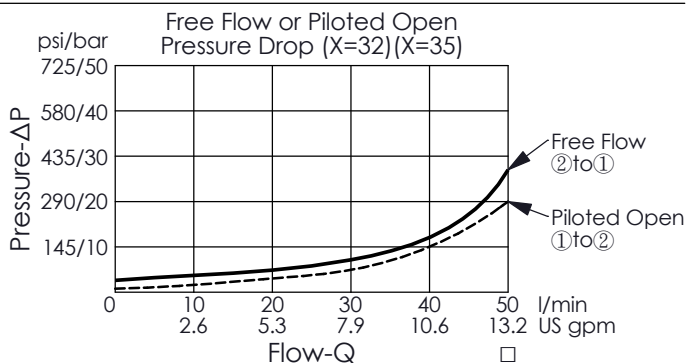
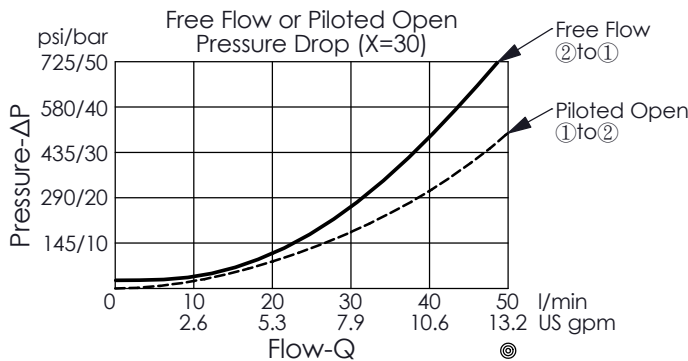


TECHNICAL DATA

Max. Setting:	350	bar
Rated flow:	30	l/min
Cavity-Tooling:	20MS-3	
Installation torque:	40 - 50	Nm
Weight:	0.20	kg

Pressure Setting:

Setting should be 1.3 times maximum load induced pressure. (We suggest when the Max. setting pressure is 350 bar, the load pressure has to be lower than 270 bar.)



X	PILOT RATIO	
30	10 : 1	
32	2 : 1	
35	5 : 1	

Z	OPTIONS	
L	Leakproof hex. socket screw.	

Y	SPRINGS	
	ADJUSTMENT RANGES (1.7 bar Cracking Pressure)	
J	140 - 350 bar	(210 bar Standard Setting)