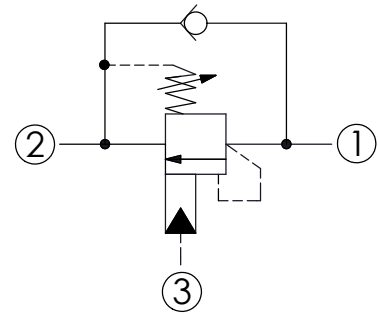
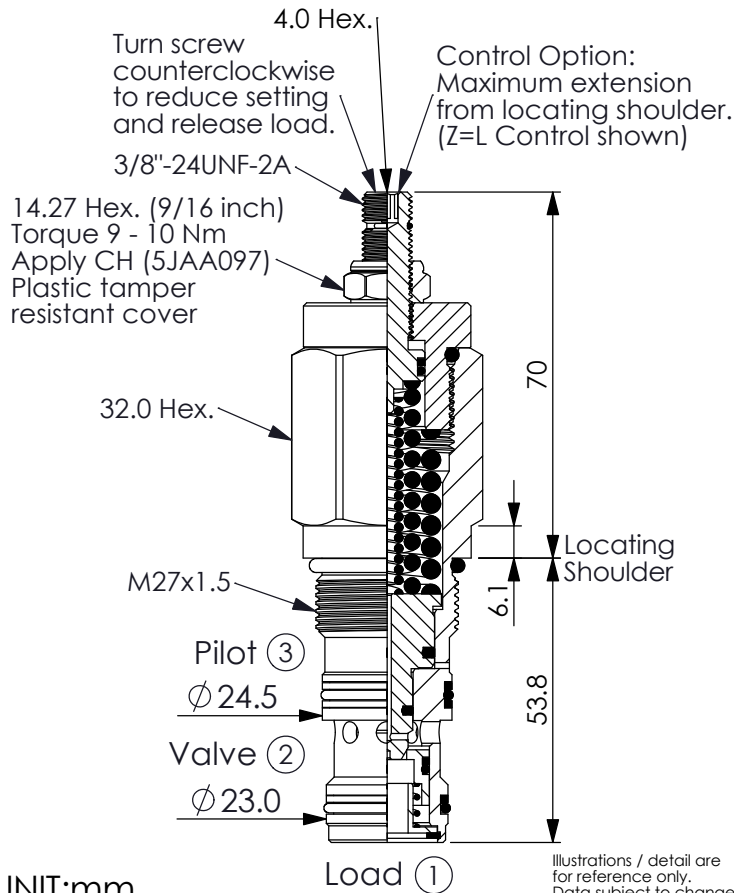


COUNTERBALANCE VALVE

Ordering Code: **CB-27M-X-Y-Z**



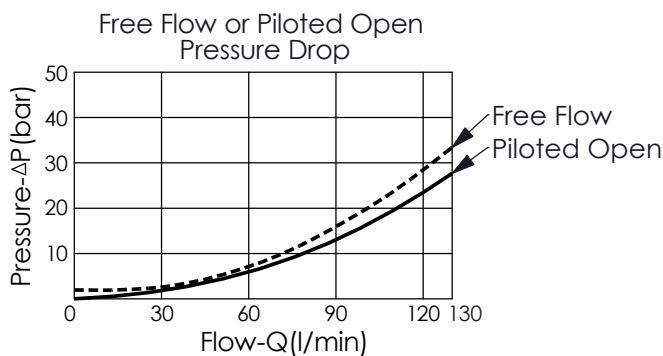
TECHNICAL DATA

Max. Setting:	350	bar
Rated flow:	130	l/min
Cavity-Tooling:	27M-3	
Installation torque:	50 - 60	Nm
Weight:	0.43	kg

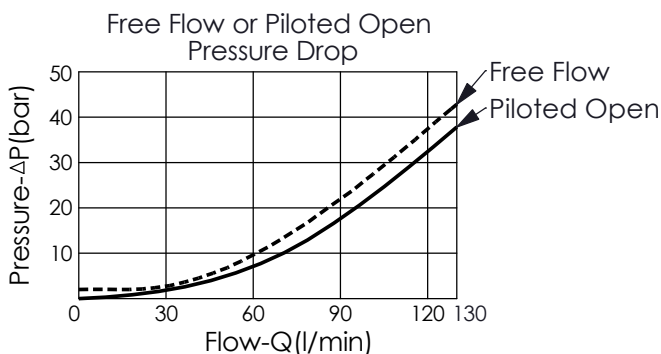
Pressure Setting:

Setting should be 1.3 times maximum load induced pressure. (We suggest when the Max. setting pressure is 350 bar, the load pressure has to be lower than 270 bar.)

X=3D



X=3H



X	PILOT RATIO	
3D	4 : 1 (with sealed pilot)	
3H	8 : 1 (with sealed pilot)	

Z	OPTIONS	
L	Leakproof hex. socket screw.	
CH	Plastic Tamper Resistant Cover of General Type Hex. Nut (Order Code:5JAA097)	

Y	SPRINGS	
	ADJUSTMENT RANGES(1.7 bar Cracking Pressure)	
J	200 - 350 bar (210 bar Standard Setting)	