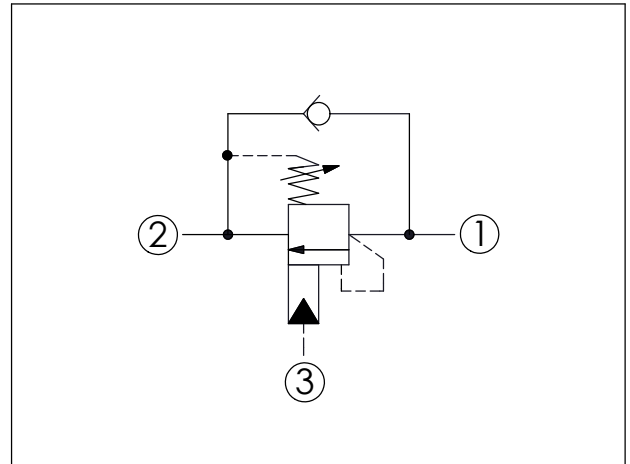
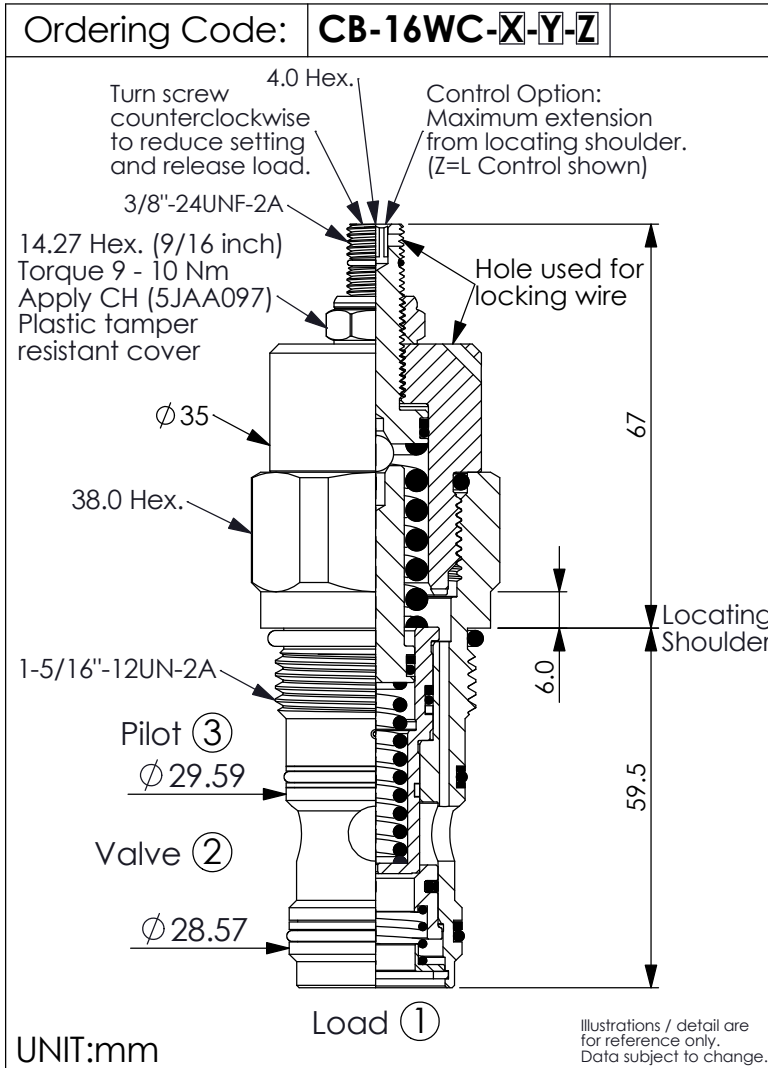


## COUNTERBALANCE VALVE (Pilot Assisted Relief With Check)

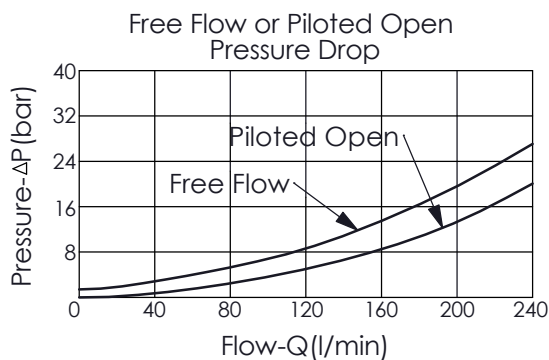


### TECHNICAL DATA

Max. Setting:	350	bar
Rated flow:	180	l/min
Cavity-Tooling:	16WC-3	
Installation torque:	100	Nm
Weight:	0.56	kg

### Pressure Setting:

Setting should be 1.3 times maximum load induced pressure.  
(We suggest when the Max. setting pressure is 350 bar, the load pressure has to be lower than 270 bar.)



**X**

### PILOT RATIO

**33**

3.5 : 1

**Y**

### SPRINGS

#### PRESSURE RANGES

**J**

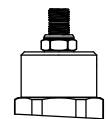
70 - 350 bar (210 bar Standard Setting)

**Z**

### OPTIONS

**L**

Leakproof hex. socket screw.



**CH**

Plastic Tamper Resistant Cover of General Type Hex. Nut  
(Order Code:5JAA097)

