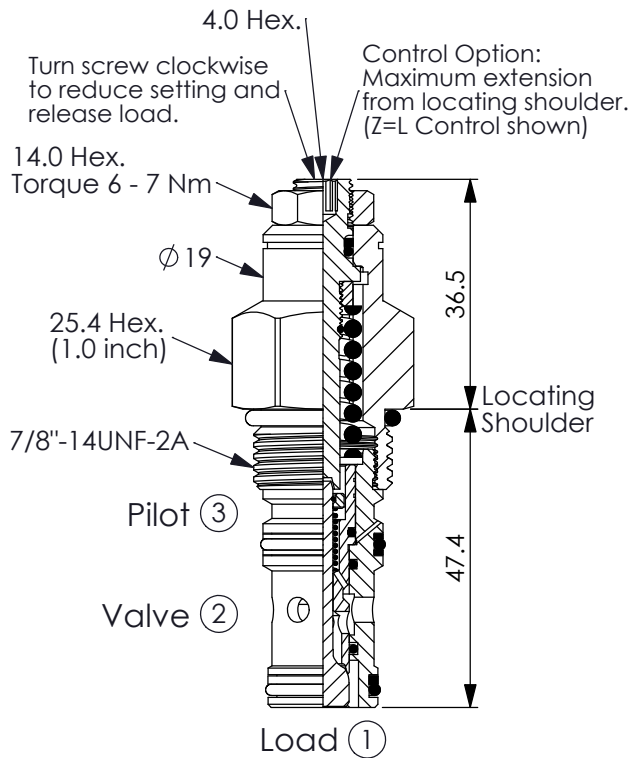


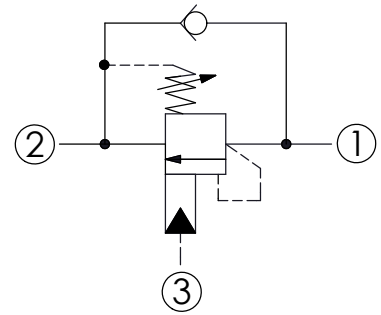
## COUNTERBALANCE VALVE

Ordering Code: **CB-10WC-X-Y-Z**



UNIT:mm

Illustrations / detail are for reference only. Data subject to change.

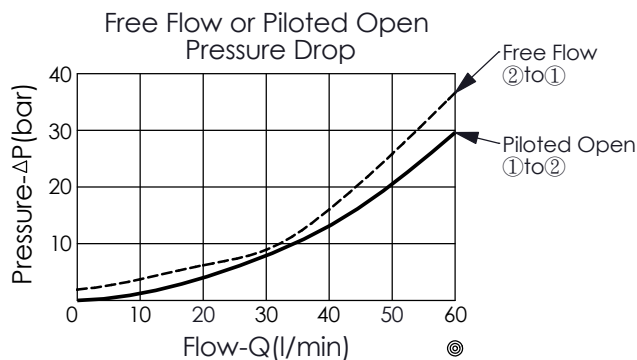


### TECHNICAL DATA

Max. Setting:	350	bar
Rated flow:	60	l/min
Cavity-Tooling:	10WC-3	
Installation torque:	35 - 45	Nm
Weight:	0.168 (Z=L)	kg

### Pressure Setting:

Setting should be 1.3 times maximum load induced pressure. (We suggest when the Max. setting pressure is 350 bar, the load pressure has to be lower than 270 bar.)



### X PILOT RATIO

**3D** 4.5 : 1 (with sealed pilot)

### Y SPRINGS

ADJUSTMENT RANGES(1.7 bar Cracking Pressure)

**J** 140 - 350 bar (210 bar Standard Setting)

**K** 70 - 175 bar (140 bar Standard Setting)

SPECIAL PURPOSES(0.3 bar Cracking Pressure)

**C** 140 - 350 bar (210 bar Standard Setting)

**D** 70 - 175 bar (140 bar Standard Setting)

### Z OPTIONS

**L** Leakproof hex. socket screw. 

**CA** Plastic Tamper Resistant Cover (Order Code:5JAA094) 