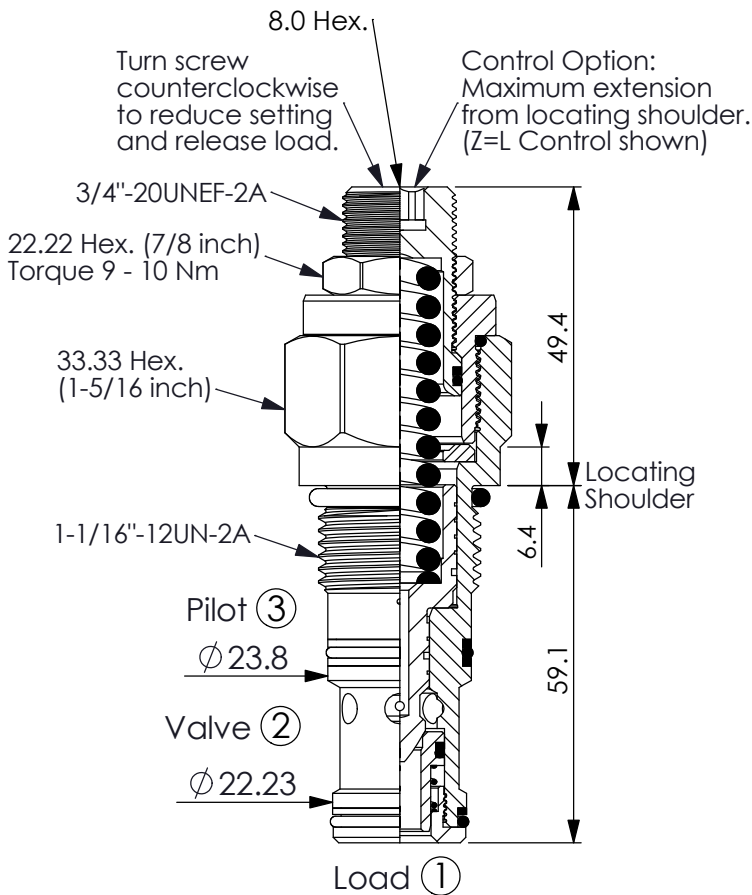


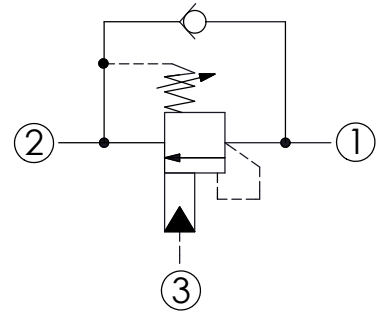
## COUNTERBALANCE VALVE

Ordering Code: **CB-12B-X-Y-Z**



UNIT:mm

Illustrations / detail are for reference only. Data subject to change.

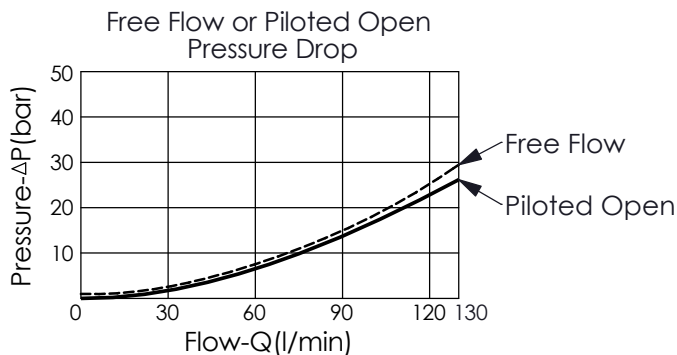


### TECHNICAL DATA

Max. Setting:	350	bar
Rated flow:	130	l/min
Cavity-Tooling:	12B-3	
Installation torque:	95 - 100	Nm
Weight:	0.38	kg

### Pressure Setting:

Setting should be 1.3 times maximum load induced pressure. (We suggest when the Max. setting pressure is 350 bar, the load pressure has to be lower than 270 bar.)



**X**

**PILOT RATIO**

**34**

**4 : 1**

**Y**

**SPRINGS**

0.3 bar Cracking Pressure

**A**

42 - 280 bar (210 bar Standard Setting)

**D**

21 - 210 bar (140 bar Standard Setting)

**W**

70 - 350 bar (210 bar Standard Setting)

**Z**

**OPTION**

**L**

Leakproof hex. socket screw.

