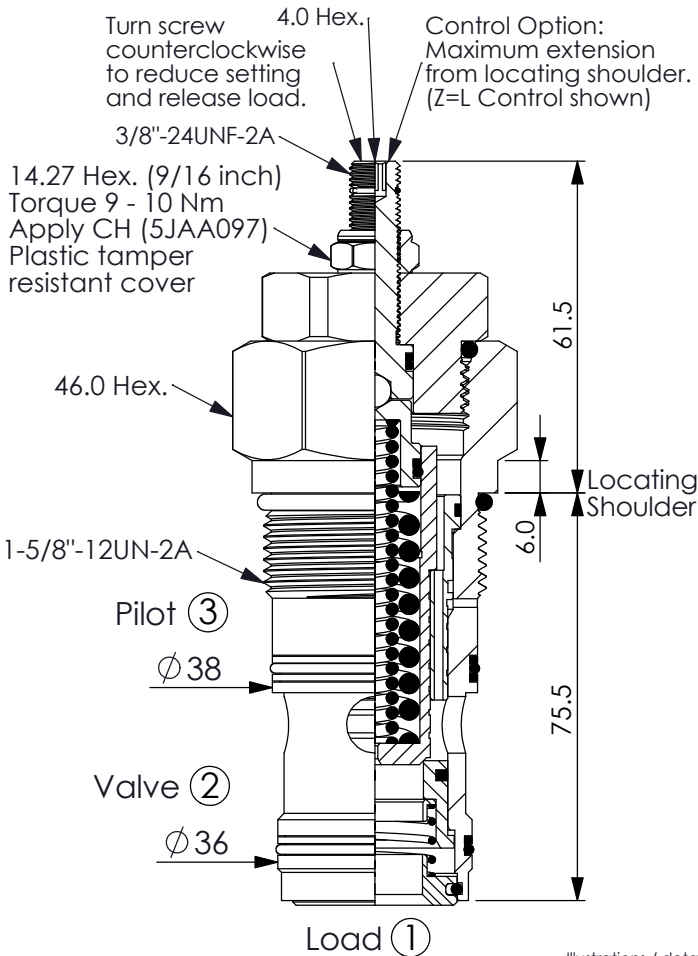


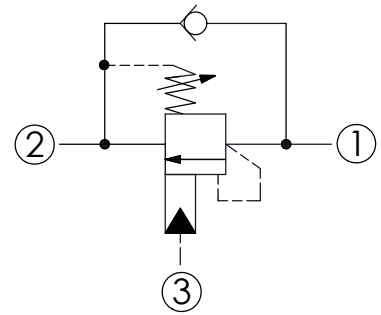
COUNTERBALANCE VALVE

Ordering Code: **CB-20WS-X-Y-Z**



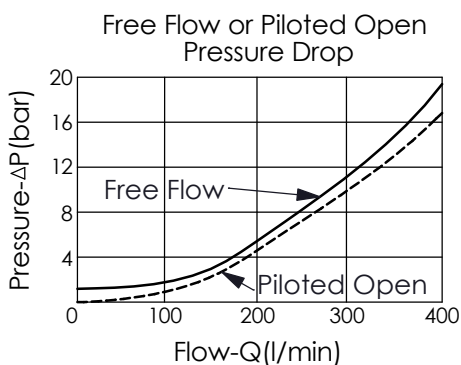
UNIT:mm

Illustrations / detail are for reference only. Data subject to change.



TECHNICAL DATA

Max. Setting:	350	bar
Rated flow:	300	l/min
Cavity-Tooling:	20WS-3	
Installation torque:	150 - 160	Nm
Weight:	0.90	kg
Pressure Setting:	Setting should be 1.3 times maximum load induced pressure. (We suggest when the Max. setting pressure is 350 bar, the load pressure has to be lower than 270 bar.)	



X PILOT RATIO

33	3 : 1 (Standard)
38	8 : 1

Y

SPRINGS

PILOT ADJUSTMENT RANGES

J

70 - 350 bar (210 bar Standard Setting)
Standard Setting made at 4.8 litres/min

Z

OPTIONS

L

Leakproof hex. socket screw.



CH

Plastic Tamper Resistant Cover of General Type Hex. Nut (Order Code:5JAA097)

