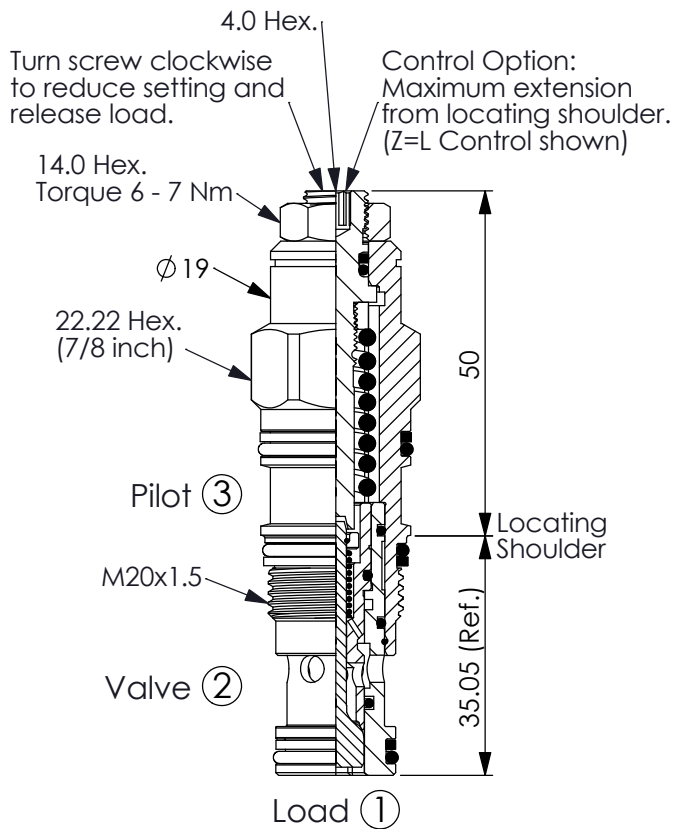


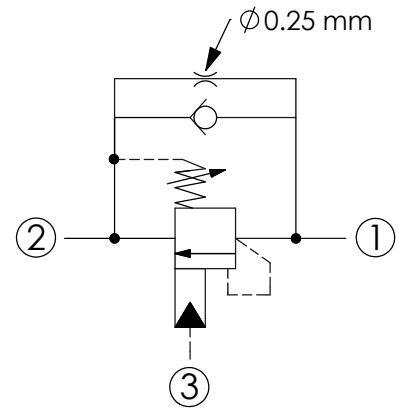
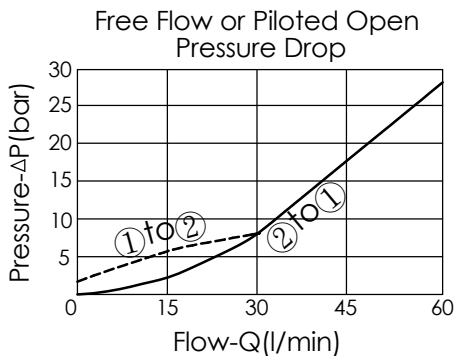
COUNTERBALANCE VALVE

Ordering Code: **CB-11A-X-Y-Z-02**



UNIT:mm

Illustrations / detail are for reference only. Data subject to change.



TECHNICAL DATA

Max. Setting:	280	bar
Rated flow:	60	l/min
Cavity-Tooling:	11A-3	
Installation torque:	40 - 50	Nm
Weight:	0.16 (Z=L)	kg

X PILOT RATIO

33	3 : 1
3C	3 : 1 (with sealed pilot)

Z OPTIONS

L	Leakproof hex. socket screw.	
LP	Leakproof hex. socket screw. With stainless steel external metal components	
CA	Plastic Tamper Resistant Cover (Order Code:5JAA094)	

Y SPRINGS

ADJUSTMENT RANGES(1.7 bar Cracking Pressure)

H 70 - 280 bar (210 bar Standard Setting)

I 25 - 105 bar (70 bar Standard Setting)

SPECIAL PURPOSES(0.3 bar Cracking Pressure)

A 70 - 280 bar (210 bar Standard Setting)

B 25 - 105 bar (70 bar Standard Setting)

E 16 - 55 bar (25 bar Standard Setting)