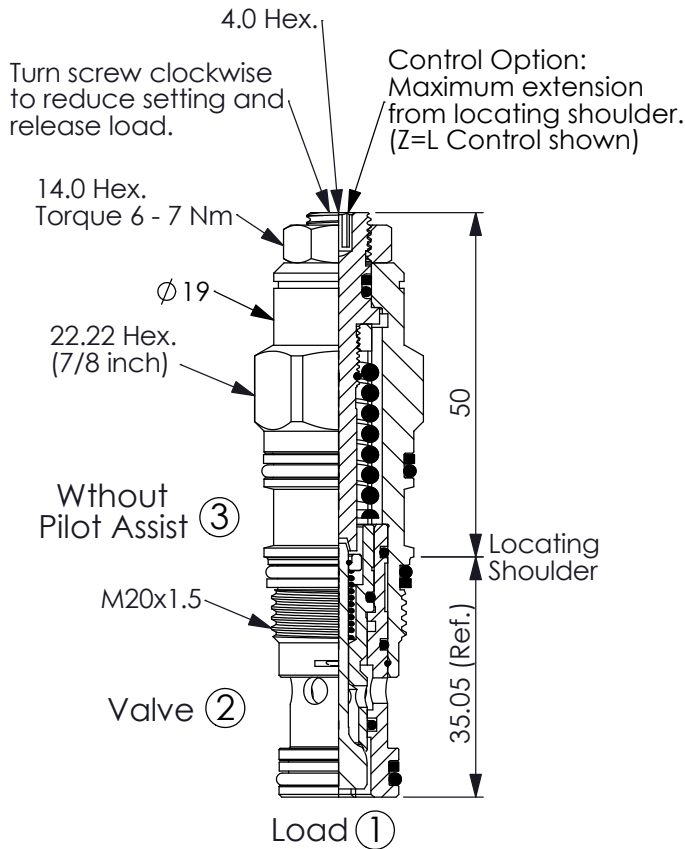


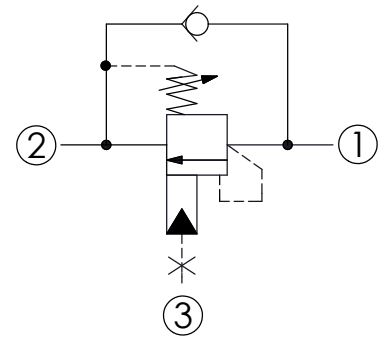
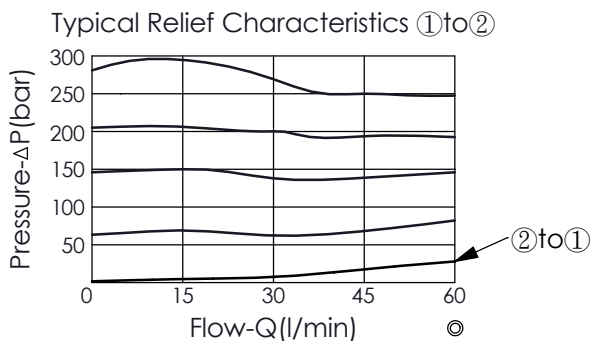
COUNTERBALANCE VALVE (Without Pilot Assist, 3 Port Cavity)

Ordering Code: **CB-11A-X-Y-Z**

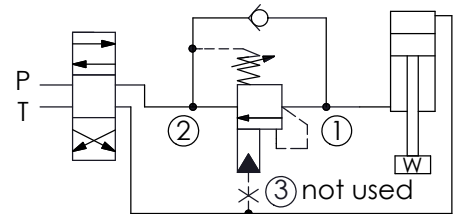


UNIT:mm

Illustrations / detail are for reference only. Data subject to change.



Example: Application Example





TECHNICAL DATA

Max. Setting:	350	bar
Rated flow:	60	l/min
Cavity-Tooling:	11A-3	
Installation torque:	40 - 50	Nm
Weight:	0.150 (Z=L)	kg

Pressure Setting:

Setting should be 1.3 times maximum load induced pressure.
(We suggest when the Max. setting pressure is 350 bar, the load pressure has to be lower than 270 bar.)

X	PILOT RATIO	
23	Without Pilot Assist, 3 Port Cavity	

Z	OPTIONS	
L	Leakproof hex. socket screw.	
CA	Plastic Tamper Resistant Cover (Order Code:5JAA094)	

Y	SPRINGS	
	ADJUSTMENT RANGES(1.7 bar Cracking Pressure)	
H	70 - 280 bar	(210 bar Standard Setting)
I	25 - 105 bar	(70 bar Standard Setting)
	SPECIAL PURPOSES(0.3 bar Cracking Pressure)	
A	70 - 280 bar	(210 bar Standard Setting)
B	25 - 105 bar	(70 bar Standard Setting)
C	140 - 350 bar	(210 bar Standard Setting)
E	16 - 55 bar	(25 bar Standard Setting)