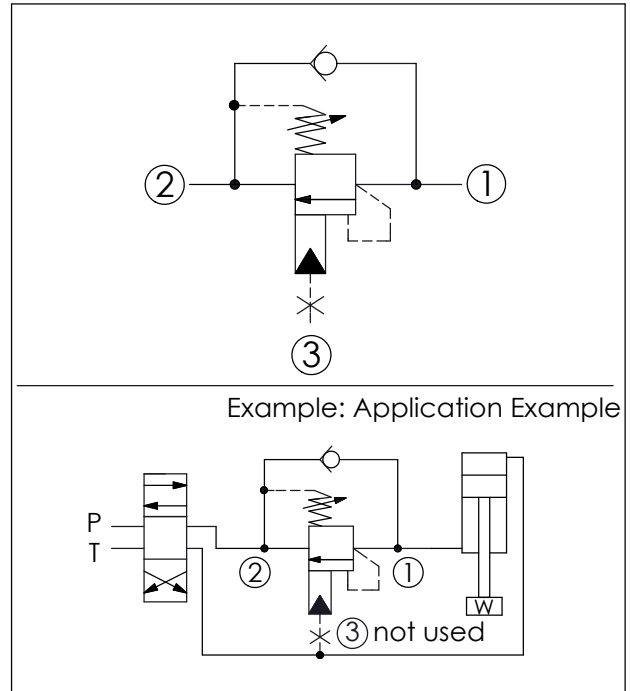
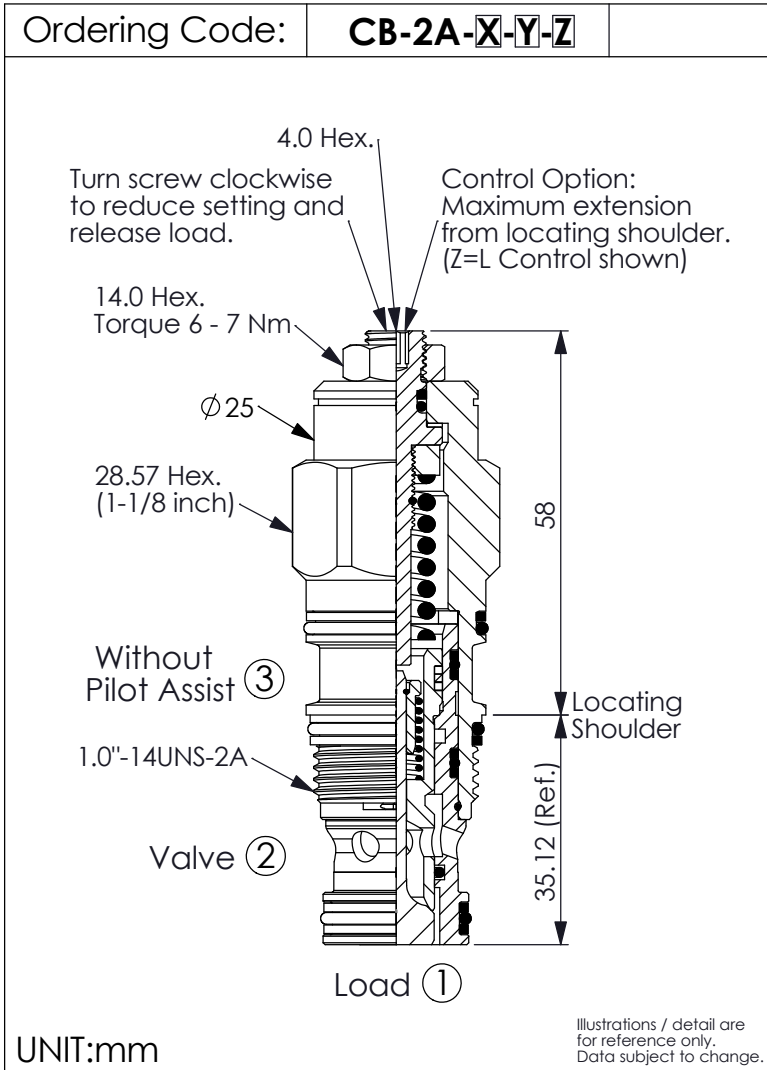
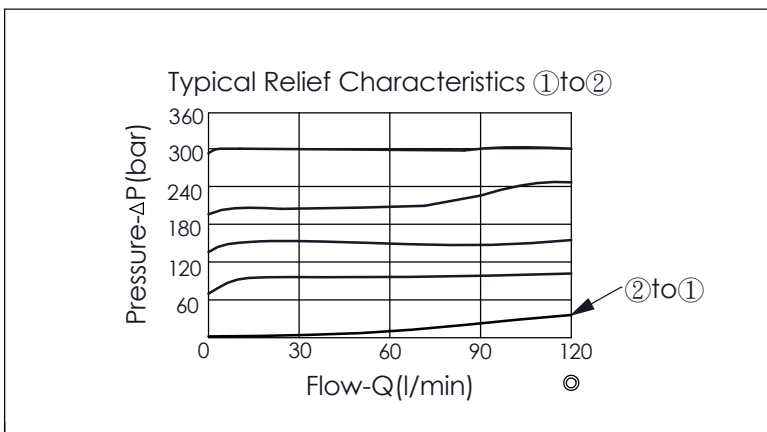


COUNTERBALANCE VALVE (Without Pilot Assist, 3 Port Cavity)



TECHNICAL DATA		
Max. Setting:	280	bar
Rated flow:	120	l/min
Cavity-Tooling:	2A-3	
Installation torque:	60 - 70	Nm
Weight:	0.278 (Z=L)	kg
Pressure Setting: Setting should be 1.3 times maximum load induced pressure. (We suggest when the Max. setting pressure is 280 bar, the load pressure has to be lower than 215 bar.)		



X	PILOT RATIO	
23	Without Pilot Assist, 3 Port Cavity	

Y	SPRINGS	
	ADJUSTMENT RANGES(1.7 bar Cracking Pressure)	
H	70 - 280 bar (210 bar Standard Setting)	
I	25 - 105 bar (70 bar Standard Setting)	
SPECIAL PURPOSES(0.3 bar Cracking Pressure)		
A	70 - 280 bar (210 bar Standard Setting)	
B	25 - 105 bar (70 bar Standard Setting)	
E	16 - 55 bar (25 bar Standard Setting)	

Z	OPTIONS	
L	Leakproof hex. socket screw.	
CA	Plastic Tamper Resistant Cover (Order Code:5JAA099)	