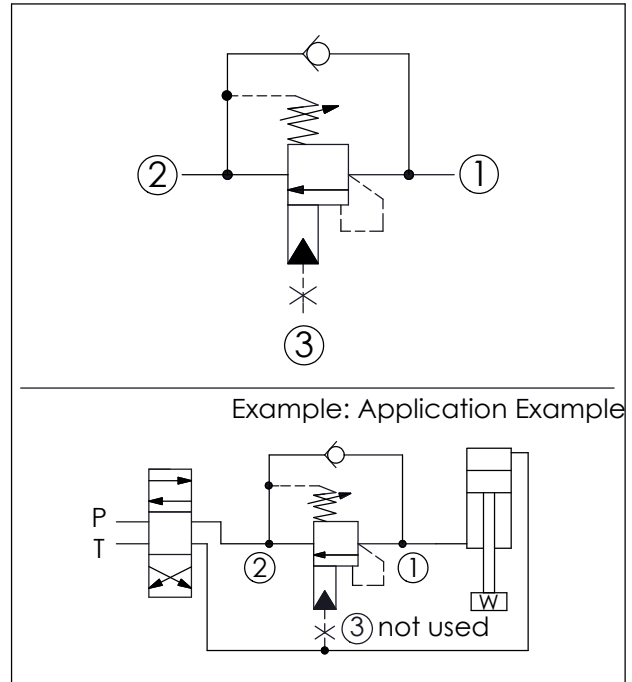
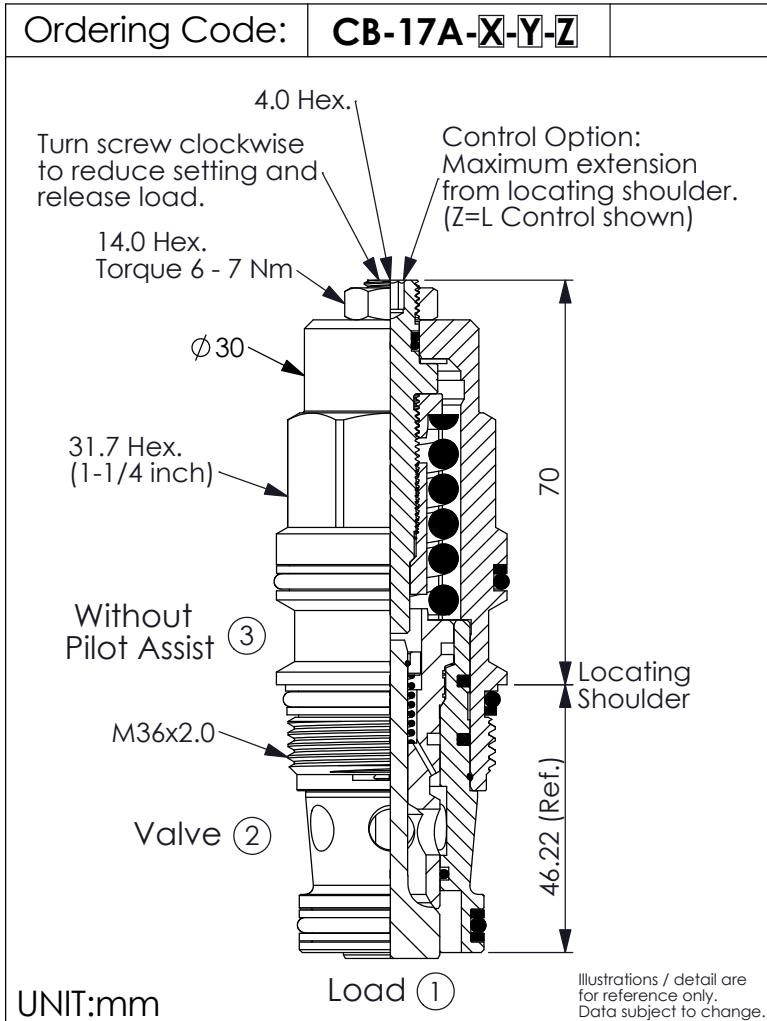
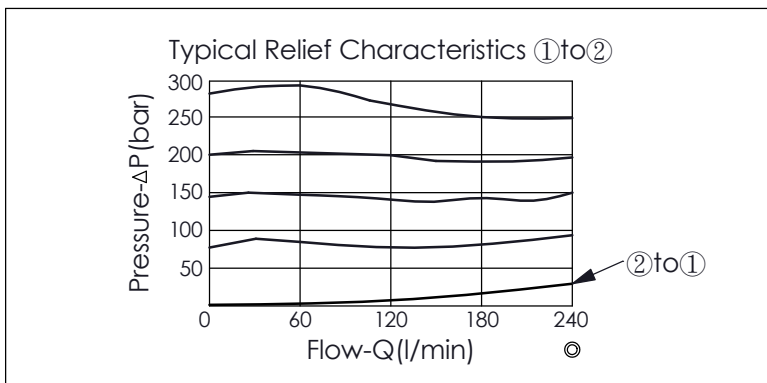


COUNTERBALANCE VALVE (Without Pilot Assist, 3 Port Cavity)



TECHNICAL DATA		
Max. Setting:	280	bar
Rated flow:	240	l/min
Cavity-Tooling:	17A-3	
Installation torque:	200 - 215	Nm
Weight:	0.60 (Z=L)	kg
Pressure Setting: Setting should be 1.3 times maximum load induced pressure. (We suggest when the Max. setting pressure is 280 bar, the load pressure has to be lower than 215 bar.)		



Y	SPRINGS	
	ADJUSTMENT RANGES (1.7 bar Cracking Pressure)	
H	70 - 280 bar	(210 bar Standard Setting)
I	25 - 105 bar	(70 bar Standard Setting)
N	8 - 28 bar	(14 bar Standard Setting)
M	16 - 55 bar	(25 bar Standard Setting)
SPECIAL PURPOSES (0.3 bar Cracking Pressure)		
A	70 - 280 bar	(210 bar Standard Setting)
B	25 - 105 bar	(70 bar Standard Setting)
Q	8 - 28 bar	(14 bar Standard Setting)
E	16 - 55 bar	(25 bar Standard Setting)

X	PILOT RATIO	
23	Without Pilot Assist, 3 Port Cavity	

Z	OPTIONS	
L	Leakproof hex. socket screw.	
C	Stainless Steel Tamper Resistant Cover.	