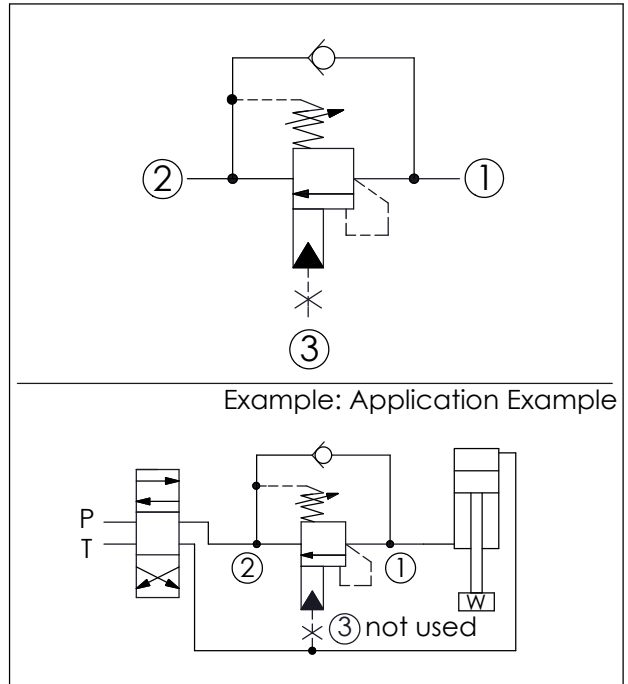
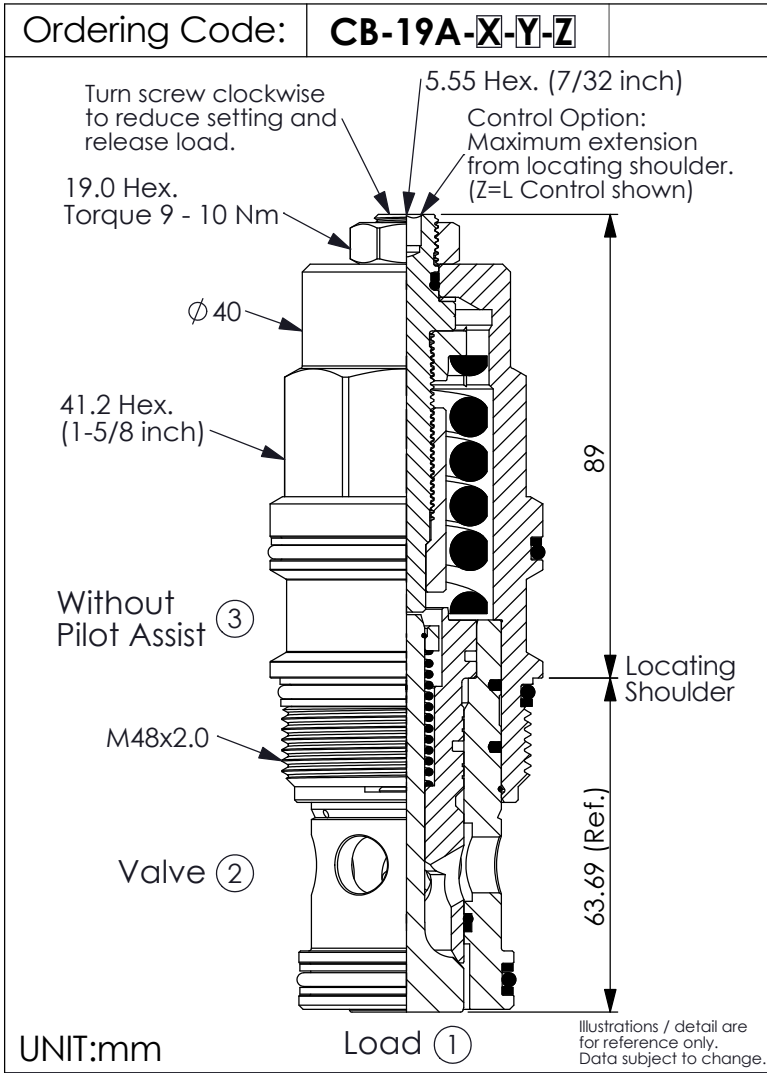
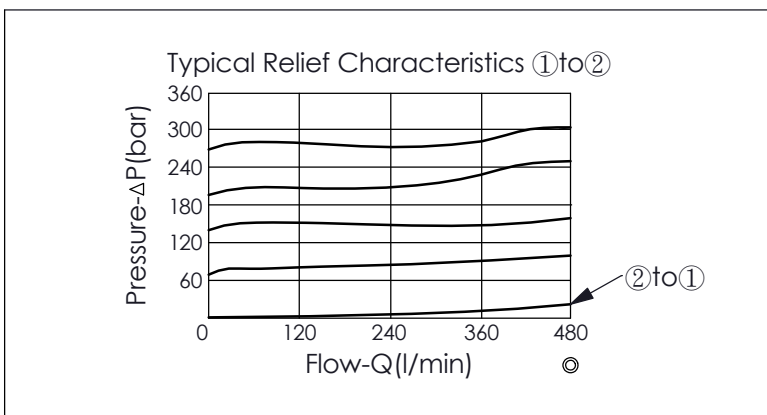


## COUNTERBALANCE VALVE (Without Pilot Assist, 3 Port Cavity)



TECHNICAL DATA		
Max. Setting:	280	bar
Rated flow:	480	l/min
Cavity-Tooling:	19A-3 (19AB-3)	
Installation torque:	465 - 500	Nm
Weight:	1.36	kg

**Pressure Setting:**  
Setting should be 1.3 times maximum load induced pressure.  
(We suggest when the Max. setting pressure is 280 bar, the load pressure has to be lower than 215 bar.)



X	PILOT RATIO	
23	Without Pilot Assist, 3 Port Cavity	

Y	SPRINGS	
	ADJUSTMENT RANGES (1.7 bar Cracking Pressure)	
H	70 - 280 bar (210 bar Standard Setting)	
I	25 - 105 bar (70 bar Standard Setting)	
	SPECIAL PURPOSES (0.3 bar Cracking Pressure)	
A	70 - 280 bar (210 bar Standard Setting)	
B	25 - 105 bar (70 bar Standard Setting)	
E	16 - 55 bar (25 bar Standard Setting)	

Z	OPTIONS	
L	Leakproof hex. socket screw.	
C	Stainless Steel Tamper Resistant Cover.	