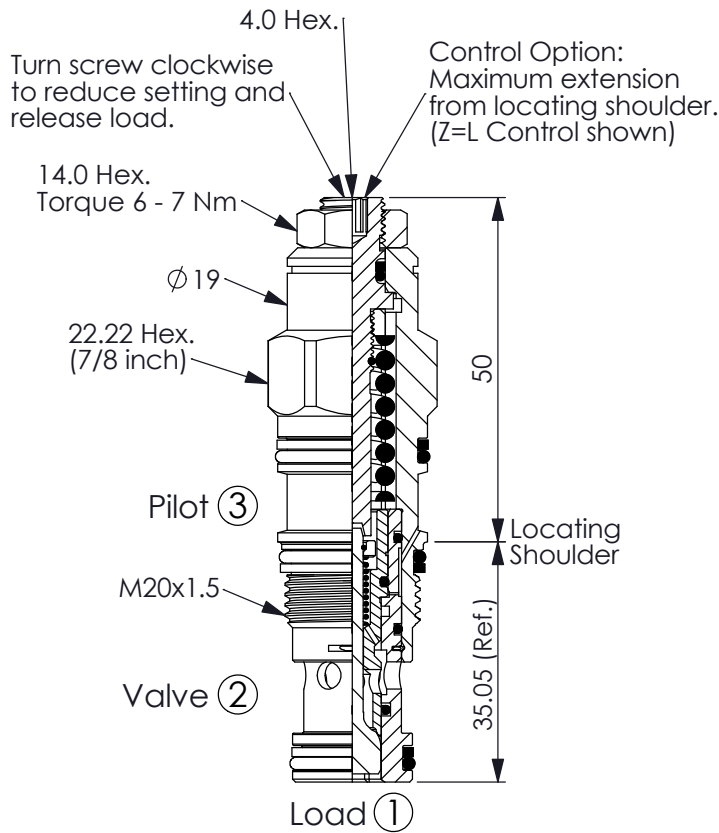


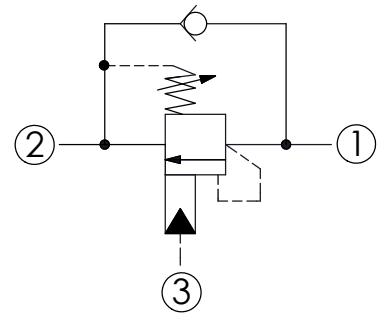
COUNTERBALANCE VALVE (Restrictive 280 Bar Maximum Setting)

Ordering Code: **CB-11A-X-Y-Z20**



UNIT:mm

Illustrations / detail are for reference only. Data subject to change.

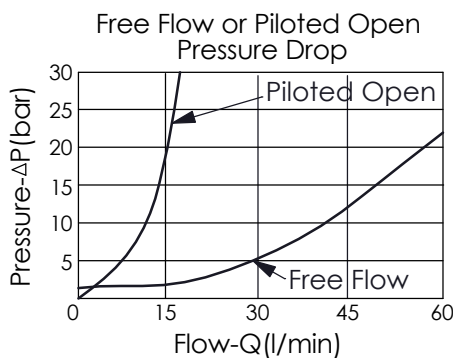


TECHNICAL DATA

Max. Setting:	280	bar
Rated flow:	20 l/min From Port ① to ②	
	60 l/min From Port ② to ①	
Cavity-Tooling:	11A-3	
Installation torque:	40 - 50	Nm
Weight:	0.15 (Z=L)	kg

Pressure Setting:

Setting should be 1.3 times maximum load induced pressure.
(We suggest when the Max. setting pressure is 280 bar, the load pressure has to be lower than 215 bar.)



X	PILOT RATIO	
3C	3 : 1	(with sealed pilot)
3Q	2 : 1	(with bleed through pilot)

Z	OPTIONS	
L	Leakproof hex. socket screw.	
LP	Leakproof hex. socket screw. With stainless steel external metal components	
C	Stainless Steel Tamper Resistant Cover.	
CA	Plastic Tamper Resistant Cover (Order Code:5JAA094)	

Y	SPRINGS	
	ADJUSTMENT RANGES (1.7 bar Cracking Pressure)	
H	70 - 280 bar	(210 bar Standard Setting)
I	25 - 105 bar	(70 bar Standard Setting)
	SPECIAL PURPOSES (0.3 bar Cracking Pressure)	
A	70 - 280 bar	(210 bar Standard Setting)
B	25 - 105 bar	(70 bar Standard Setting)
E	16 - 55 bar	(25 bar Standard Setting)