

## COUNTERBALANCE VALVE (Restrictive 280 Bar Maximum Setting)

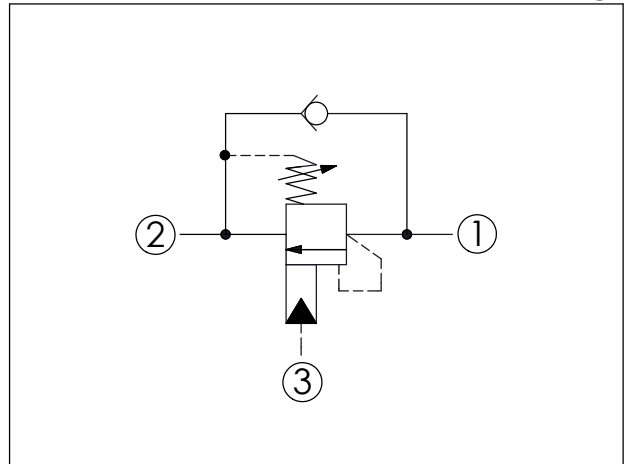
Ordering Code: **CB-2A-X-Y-Z32**

Turn screw clockwise to reduce setting and release load.

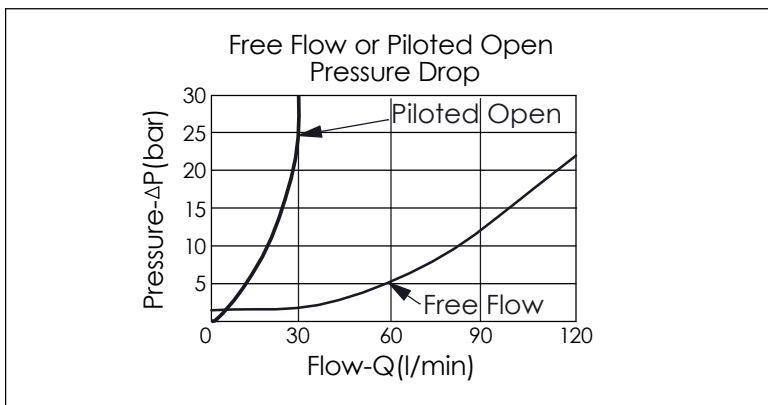
Control Option: Maximum extension from locating shoulder. (Z=L Control shown)

UNIT:mm

Illustrations / detail are for reference only. Data subject to change.



TECHNICAL DATA		
Max. Setting:	280	bar
Rated flow:	32 l/min From Port ① to ② 120 l/min From Port ② to ①	
Cavity-Tooling:	2A-3	
Installation torque:	60 - 70	Nm
Weight:	0.279 (Z=L)	kg
Pressure Setting:	Setting should be 1.3 times maximum load induced pressure. (We suggest when the Max. setting pressure is 280 bar, the load pressure has to be lower than 215 bar.)	



X	PILOT RATIO	
3C	3 : 1 (with sealed pilot)	

Y	SPRINGS	
	ADJUSTMENT RANGES(1.7 bar Cracking Pressure)	
H	70 - 280 bar (210 bar Standard Setting)	
I	25 - 105 bar (70 bar Standard Setting)	
	SPECIAL PURPOSES(0.3 bar Cracking Pressure)	
A	70 - 280 bar (210 bar Standard Setting)	
B	25 - 105 bar (70 bar Standard Setting)	

Z	OPTIONS	
L	Leakproof hex. socket screw.	
CA	Plastic Tamper Resistant Cover (Order Code:5JAA099)	