

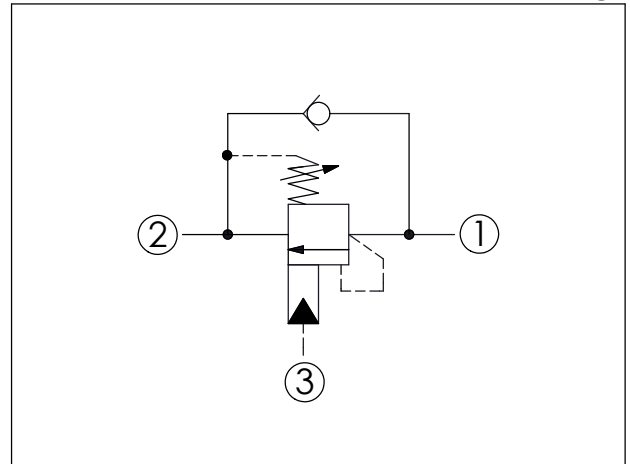
COUNTERBALANCE VALVE (Restrictive 280 Bar Maximum Setting)

Ordering Code: **CB-19A-X-Y-Z80**

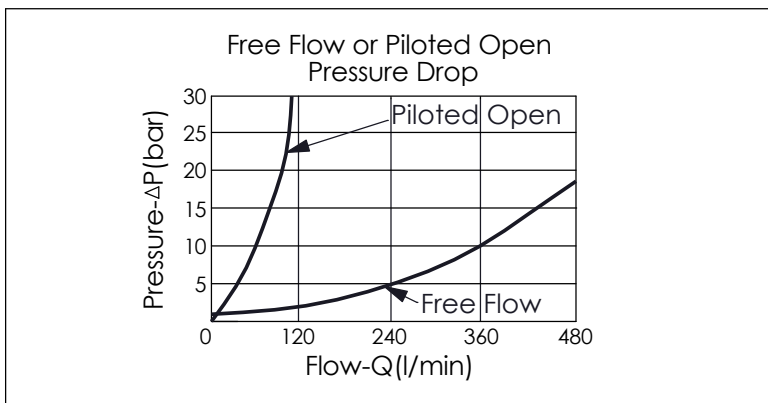
5.55 Hex. (7/32 inch)
Turn screw clockwise to reduce setting and release load.
19.0 Hex. Torque 9 - 10 Nm
Control Option: Maximum extension from locating shoulder. (Z=L Control shown)
ϕ 40
41.2 Hex. (1-5/8 inch)
89
Pilot (3)
M48x2.0
Valve (2)
Load (1)
Locating Shoulder
63.69 (Ref.)

UNIT:mm

Illustrations / detail are for reference only. Data subject to change.



TECHNICAL DATA		
Max. Setting:	280	bar
Rated flow:	80 l/min From Port ① to ②	
	480 l/min From Port ② to ①	
Cavity-Tooling:	19A-3 (19AB-3)	
Installation torque:	465 - 500	Nm
Weight:	1.37 (Z=L)	kg
Pressure Setting:	Setting should be 1.3 times maximum load induced pressure. (We suggest when the Max. setting pressure is 280 bar, the load pressure has to be lower than 215 bar.)	



X	PILOT RATIO
3C	3 : 1 (with sealed pilot)

Y	SPRINGS
ADJUSTMENT RANGES(1.7 bar Cracking Pressure)	
H	70 - 280 bar (210 bar Standard Setting)
I	25 - 105 bar (70 bar Standard Setting)
SPECIAL PURPOSES(0.3 bar Cracking Pressure)	
A	70 - 280 bar (210 bar Standard Setting)
B	25 - 105 bar (70 bar Standard Setting)

Z	OPTIONS
L	Leakproof hex. socket screw.
C	Stainless Steel Tamper Resistant Cover.