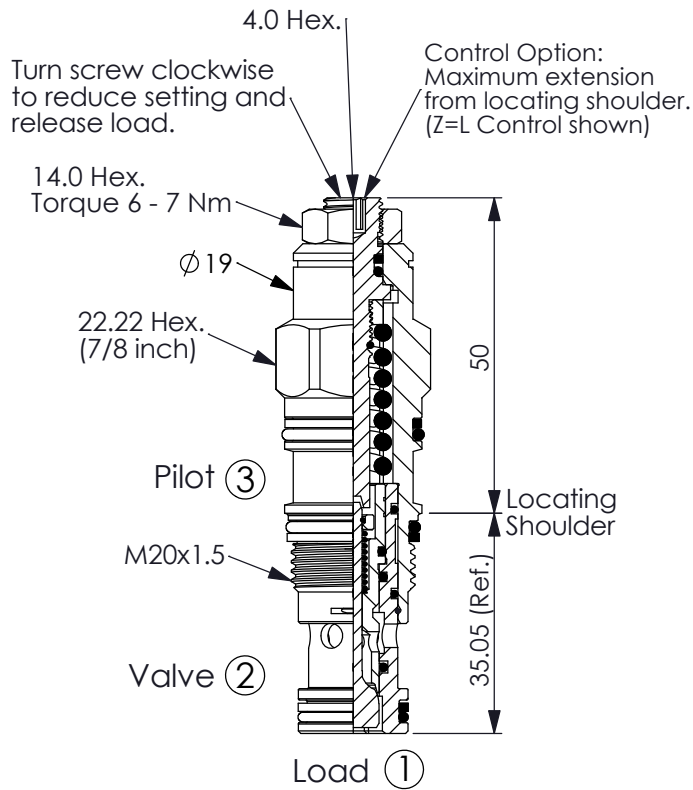


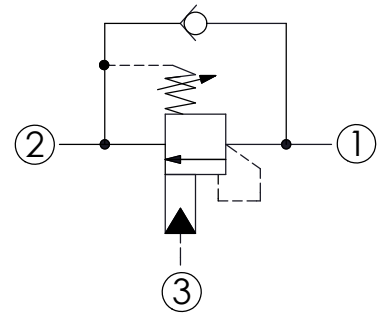
COUNTERBALANCE VALVE (Restrictive 350 Bar Maximum Setting)

Ordering Code: **CB-11A-X-Y-Z20**



UNIT:mm

Illustrations / detail are for reference only. Data subject to change.

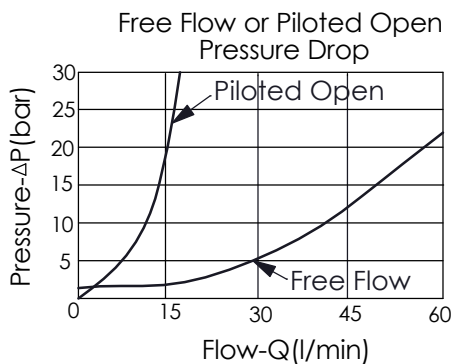


TECHNICAL DATA

Max. Setting:	350	bar
Rated flow:	20 l/min From Port ① to ②	
	60 l/min From Port ② to ①	
Cavity-Tooling:	11A-3	
Installation torque:	40 - 50	Nm
Weight:	0.153 (Z=L)	kg

Pressure Setting:

Setting should be 1.3 times maximum load induced pressure.
(We suggest when the Max. setting pressure is 350 bar, the load pressure has to be lower than 270 bar.)



X PILOT RATIO

3B	2.3 : 1 (with sealed pilot)
3D	4.5 : 1 (with sealed pilot)
3J	10 : 1 (with sealed pilot)

Y

SPRINGS

ADJUSTMENT RANGES(1.7 bar Cracking Pressure)

J

140 - 350 bar (210 bar Standard Setting)

K

70 - 175 bar (140 bar Standard Setting)

SPECIAL PURPOSES(0.3 bar Cracking Pressure)

C

140 - 350 bar (210 bar Standard Setting)

D

70 - 175 bar (140 bar Standard Setting)

Z

OPTIONS

L

Leakproof hex. socket screw.



LP

Leakproof hex. socket screw. With stainless steel external metal components



CA

Plastic Tamper Resistant Cover (Order Code:5JAA094)

