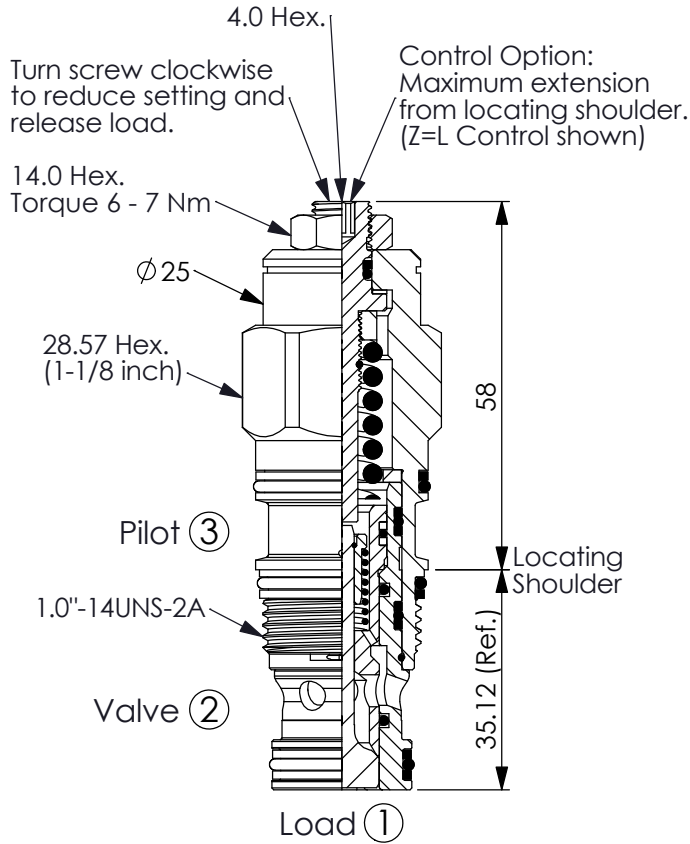


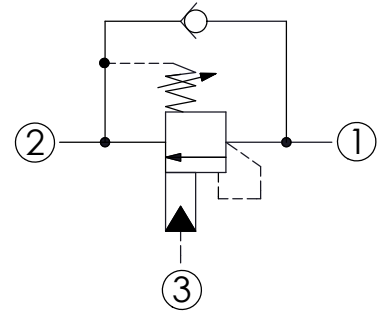
COUNTERBALANCE VALVE (Restrictive 350 Bar Maximum Setting)

Ordering Code: **CB-2A-X-Y-Z32**



UNIT:mm

Illustrations / detail are for reference only. Data subject to change.

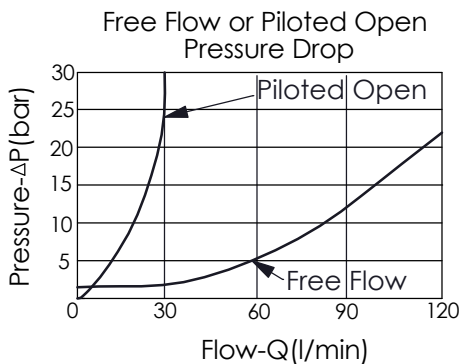


TECHNICAL DATA

Max. Setting:	350	bar
Rated flow:	32 l/min From Port ① to ②	
	120 l/min From Port ② to ①	
Cavity-Tooling:	2A-3	
Installation torque:	60 - 70	Nm
Weight:	0.279 (Z=L)	kg

Pressure Setting:

Setting should be 1.3 times maximum load induced pressure.
(We suggest when the Max. setting pressure is 350 bar, the load pressure has to be lower than 270 bar.)



X PILOT RATIO

3D 4.5 : 1 (with sealed pilot)

Y	SPRINGS	
	ADJUSTMENT RANGES(1.7 bar Cracking Pressure)	
J	140 - 350 bar (210 bar Standard Setting)	
K	70 - 175 bar (140 bar Standard Setting)	
	SPECIAL PURPOSES(0.3 bar Cracking Pressure)	
C	140 - 350 bar (210 bar Standard Setting)	
D	70 - 175 bar (140 bar Standard Setting)	

Z OPTIONS

L	Leakproof hex. socket screw.		
LP	Leakproof hex. socket screw. With stainless steel external metal components		
CA	Plastic Tamper Resistant Cover (Order Code:5JAA099)		