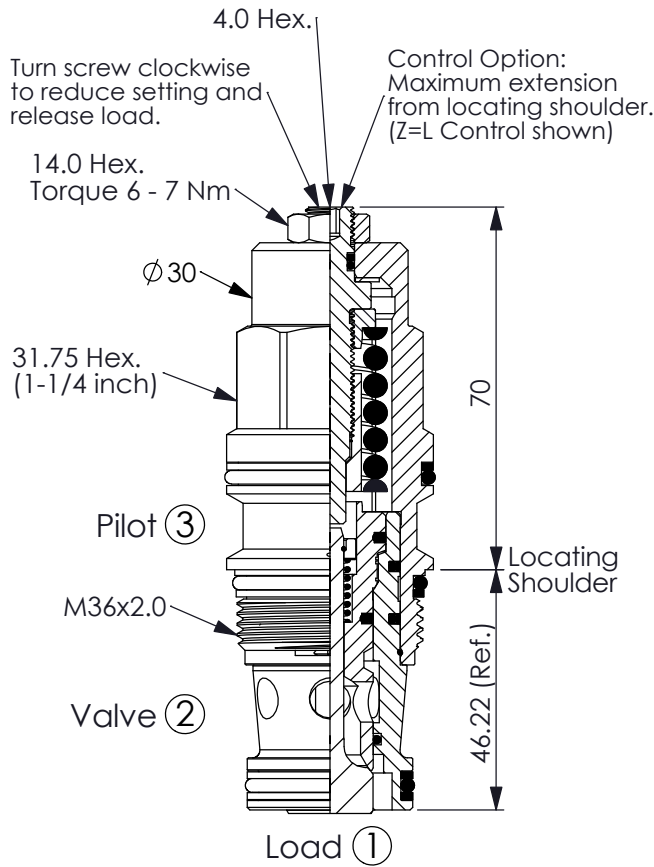


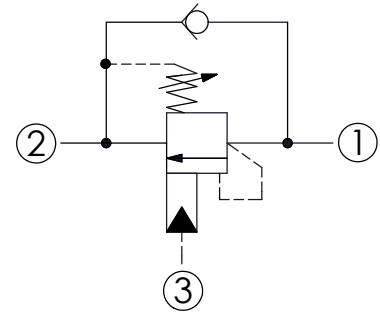
## COUNTERBALANCE VALVE (Restrictive 350 Bar Maximum Setting)

Ordering Code: **CB-17A-X-Y-Z60**



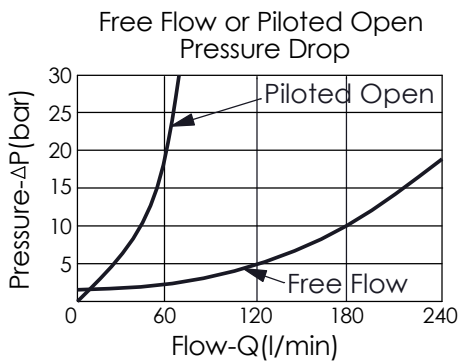
UNIT:mm

Illustrations / detail are for reference only. Data subject to change.



### TECHNICAL DATA

Max. Setting:	350	bar
Rated flow:	60 l/min From Port ① to ②	240 l/min From Port ② to ①
Cavity-Tooling:	17A-3	
Installation torque:	200 - 215	Nm
Weight:	0.61 (Z=L)	kg
Pressure Setting:	Setting should be 1.3 times maximum load induced pressure. (We suggest when the Max. setting pressure is 350 bar, the load pressure has to be lower than 270 bar.)	

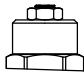


### X PILOT RATIO

**3D** 4.5 : 1 (with sealed pilot)

Y	SPRINGS	
	ADJUSTMENT RANGES (1.7 bar Cracking Pressure)	
<b>J</b>	140 - 350 bar	(210 bar Standard Setting)
<b>K</b>	70 - 175 bar	(140 bar Standard Setting)
	SPECIAL PURPOSES (0.3 bar Cracking Pressure)	
<b>C</b>	140 - 350 bar	(210 bar Standard Setting)
<b>D</b>	70 - 175 bar	(140 bar Standard Setting)

### Z OPTIONS

<b>L</b>	Leakproof hex. socket screw.	
<b>C</b>	Stainless Steel Tamper Resistant Cover.	