

COUNTERBALANCE VALVE (Restrictive 350 Bar Maximum Setting)

Ordering Code: **CB-19A-X-Y-Z80**

Turn screw clockwise to reduce setting and release load.
19.0 Hex. Torque 9 - 10 Nm

5.55 Hex. (7/32 inch)
Control Option: Maximum extension from locating shoulder. (Z=L Control shown)

Ø 40

41.2 Hex. (1-5/8 inch)

Pilot (3)

M48x2.0

Valve (2)

Load (1)

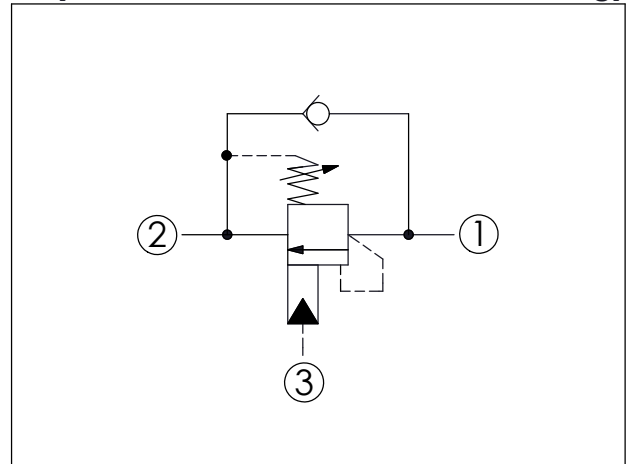
89

63.69 (Ref.)

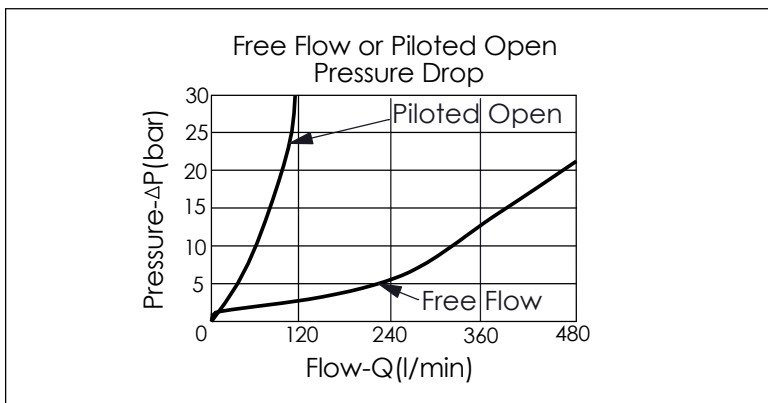
Locating Shoulder

UNIT:mm

Illustrations / detail are for reference only. Data subject to change.



TECHNICAL DATA		
Max. Setting:	350	bar
Rated flow:	80 l/min From Port ① to ②	
	480 l/min From Port ② to ①	
Cavity-Tooling:	19A-3 (19AB-3)	
Installation torque:	465 - 500	Nm
Weight:	1.37 (Z=L)	kg
Pressure Setting: Setting should be 1.3 times maximum load induced pressure. (We suggest when the Max. setting pressure is 350 bar, the load pressure has to be lower than 270 bar.)		



X	PILOT RATIO	
3D	4.5 : 1 (with sealed pilot)	

Y	SPRINGS	
	ADJUSTMENT RANGES (1.7 bar Cracking Pressure)	
J	140 - 350 bar (210 bar Standard Setting)	
K	70 - 175 bar (140 bar Standard Setting)	
	SPECIAL PURPOSES (0.3 bar Cracking Pressure)	
C	140 - 350 bar (210 bar Standard Setting)	
D	70 - 175 bar (140 bar Standard Setting)	

Z	OPTIONS	
L	Leakproof hex. socket screw.	
C	Stainless Steel Tamper Resistant Cover.	