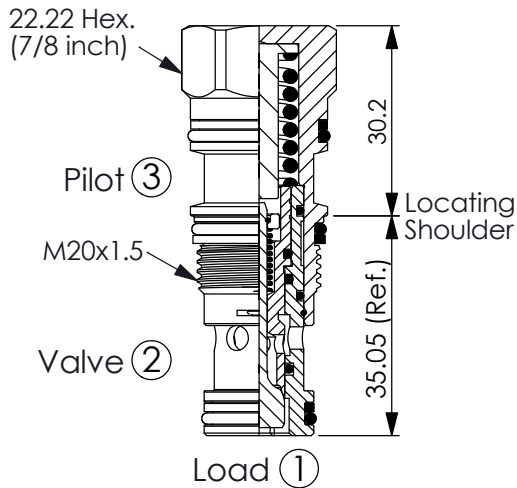


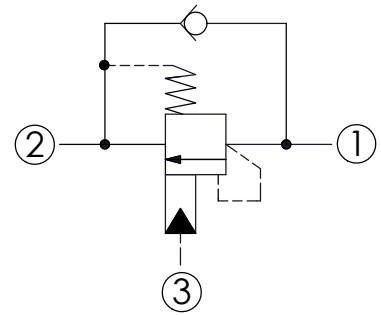
## COUNTERBALANCE VALVE (Semi-Restrictive, Non-vented, Fixed Setting)

Ordering Code: **CB-11A-X-Y-Z40**



UNIT:mm

Illustrations / detail are for reference only. Data subject to change.



### TECHNICAL DATA

Max. Setting: 350 bar

Rated flow: 40 l/min From Port ① to ②  
60 l/min From Port ② to ①

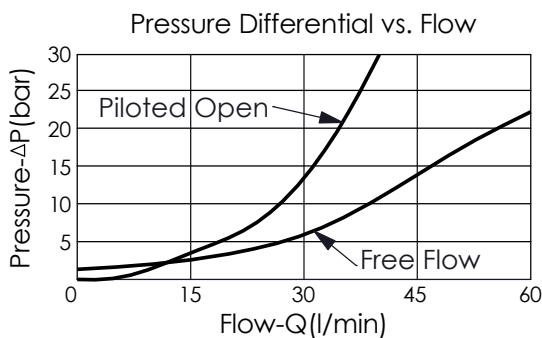
Cavity-Tooling: 11A-3

Installation torque: 40 - 50 Nm

Weight: 0.12 kg

### Pressure Setting:

Setting should be 1.3 times maximum load induced pressure.  
(We suggest when the Max. setting pressure is 350 bar, the load pressure has to be lower than 270 bar.)



### X PILOT RATIO

**3B** 2.3 : 1 (with sealed pilot)

**3D** 4.5 : 1 (with sealed pilot)

**Y**

### SPRINGS

FIXED SETTING

**240** 220 - 260 bar

**310** 285 - 340 bar

**350** 325 - 390 bar

**Z**

### OPTION

**N** Non-adjustable  
2.0 bar Cracking Pressure

**Q** Non-adjustable  
0.3 bar Cracking Pressure