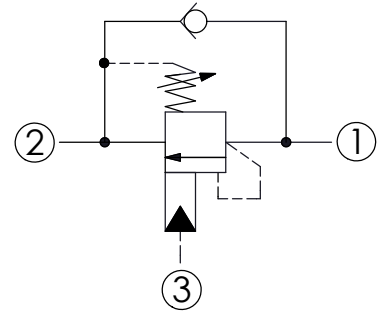
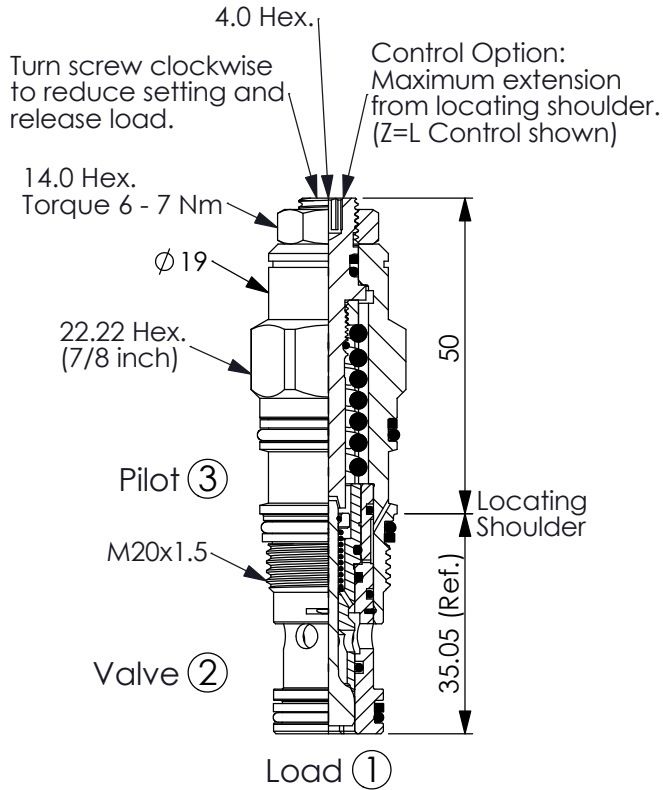


COUNTERBALANCE VALVE (Semi-Restrictive, 280 Bar Maximum Setting)

Ordering Code: **CB-11A-X-Y-Z40**



TECHNICAL DATA

Max. Setting:	280	bar
Rated flow:	40 l/min From Port ① to ②	
	60 l/min From Port ② to ①	
Cavity-Tooling:	11A-3	
Installation torque:	40 - 50	Nm
Weight:	0.15 (Z=L)	kg

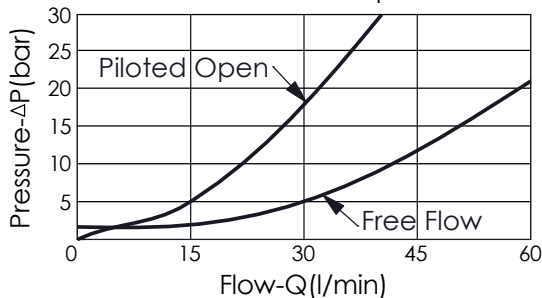
Pressure Setting:

Setting should be 1.3 times maximum load induced pressure.
(We suggest when the Max. setting pressure is 280 bar, the load pressure has to be lower than 215 bar.)

UNIT:mm

Illustrations / detail are for reference only.
Data subject to change.

Free Flow or Piloted Open Pressure Drop



X PILOT RATIO

3A	1.5 : 1 (with sealed pilot)
3C	3 : 1 (with sealed pilot)

Y

SPRINGS

ADJUSTMENT RANGES(1.7 bar Cracking Pressure)

H

70 - 280 bar (210 bar Standard Setting)

I

25 - 105 bar (70 bar Standard Setting)

SPECIAL PURPOSES(0.3 bar Cracking Pressure)

A

70 - 280 bar (210 bar Standard Setting)

B

25 - 105 bar (70 bar Standard Setting)

Z

OPTIONS

L

Leakproof hex. socket screw.



LP

Leakproof hex. socket screw. With stainless steel external metal components



CA

Plastic Tamper Resistant Cover (Order Code:5JAA094)

