

COUNTERBALANCE VALVE (Semi-Restrictive, 280 Bar Maximum Setting)

Ordering Code: **CB-2A-X-Y-Z80**

Turn screw clockwise to reduce setting and release load.

Control Option: Maximum extension from locating shoulder. (Z=L Control shown)

4.0 Hex.

14.0 Hex. Torque 6 - 7 Nm

28.57 Hex. (1-1/8 inch)

Pilot ③

1.0"-14UNS-2A

Valve ②

Load ①

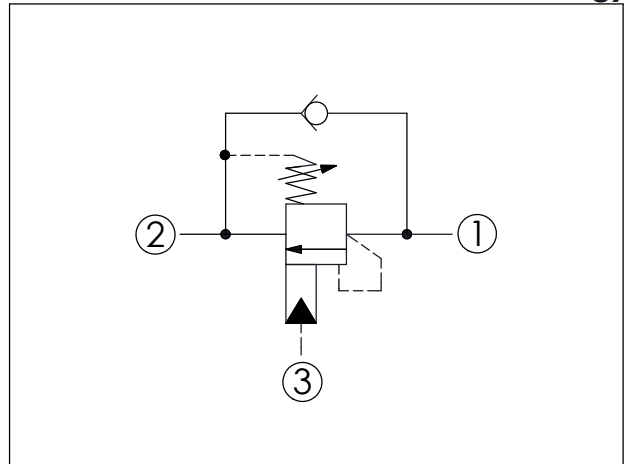
58

35.12 (Ref.)

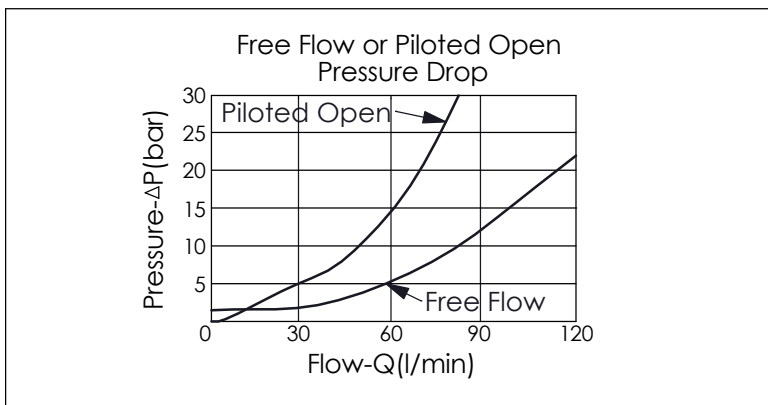
Locating Shoulder

UNIT:mm

Illustrations / detail are for reference only. Data subject to change.



TECHNICAL DATA		
Max. Setting:	280	bar
Rated flow:	80 l/min From Port ① to ② 120 l/min From Port ② to ①	
Cavity-Tooling:	2A-3	
Installation torque:	60 - 70	Nm
Weight:	0.279 (Z=L) kg	
Pressure Setting:	Setting should be 1.3 times maximum load induced pressure. (We suggest when the Max. setting pressure is 280 bar, the load pressure has to be lower than 215 bar.)	



X	PILOT RATIO	
3A	1.5 : 1 (with sealed pilot)	
3C	3 : 1 (with sealed pilot)	

Y	SPRINGS	
	ADJUSTMENT RANGES(1.7 bar Cracking Pressure)	
H	70 - 280 bar (210 bar Standard Setting)	
I	25 - 105 bar (70 bar Standard Setting)	
	SPECIAL PURPOSES(0.3 bar Cracking Pressure)	
A	70 - 280 bar (210 bar Standard Setting)	
B	25 - 105 bar (70 bar Standard Setting)	

Z	OPTIONS	
L	Leakproof hex. socket screw.	
CA	Plastic Tamper Resistant Cover (Order Code:5JAA099)	