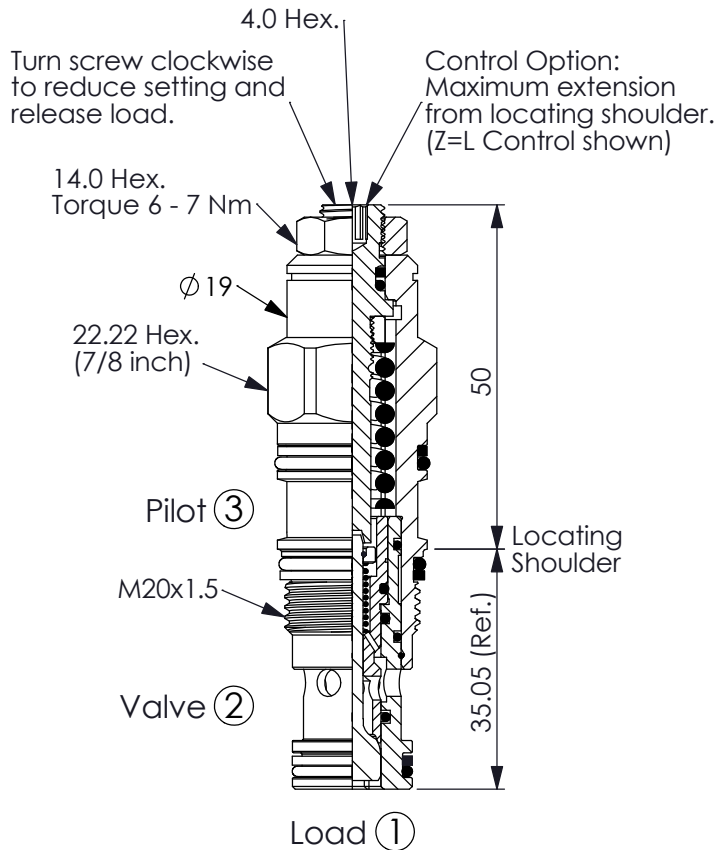


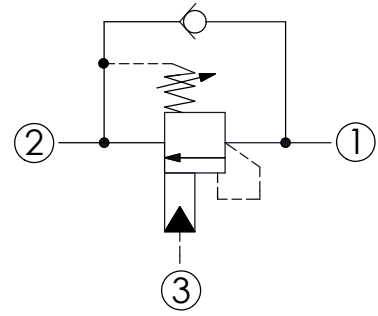
COUNTERBALANCE VALVE (Ultra-Restrictive, 280 Bar Maximum Setting)

Ordering Code: **CB-11A-X-Y-Z10**



UNIT:mm

Illustrations / detail are for reference only. Data subject to change.

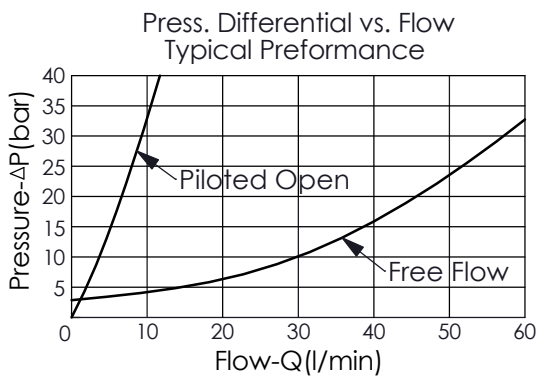


TECHNICAL DATA

Max. Setting:	280	bar
Rated flow:	10 l/min From Port ① to ②	
	60 l/min From Port ② to ①	
Cavity-Tooling:	11A-3	
Installation torque:	40 - 50	Nm
Weight:	0.15 (Z=L,LP)	kg

Pressure Setting:



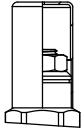
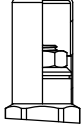
Setting should be 1.3 times maximum load induced pressure. (We suggest when the Max. setting pressure is 280 bar, the load pressure has to be lower than 215 bar.)



X PILOT RATIO

3A	1.5 : 1 (with sealed pilot)
3C	3 : 1 (with sealed pilot)

Z OPTIONS

L	Leakproof hex. socket screw.	
LP	Leakproof hex. socket screw. With stainless steel external metal components	
C	Stainless Steel Tamper Resistant Cover.	
CP	Stainless Steel Tamper Resistant Cover. With stainless steel external metal components	

Y	SPRINGS	
	ADJUSTMENT RANGES(1.7 bar Cracking Pressure)	
H	70 - 280 bar (210 bar Standard Setting)	
I	25 - 105 bar (70 bar Standard Setting)	
	SPECIAL PURPOSES(0.3 bar Cracking Pressure)	
A	70 - 280 bar (210 bar Standard Setting)	
B	25 - 105 bar (70 bar Standard Setting)	