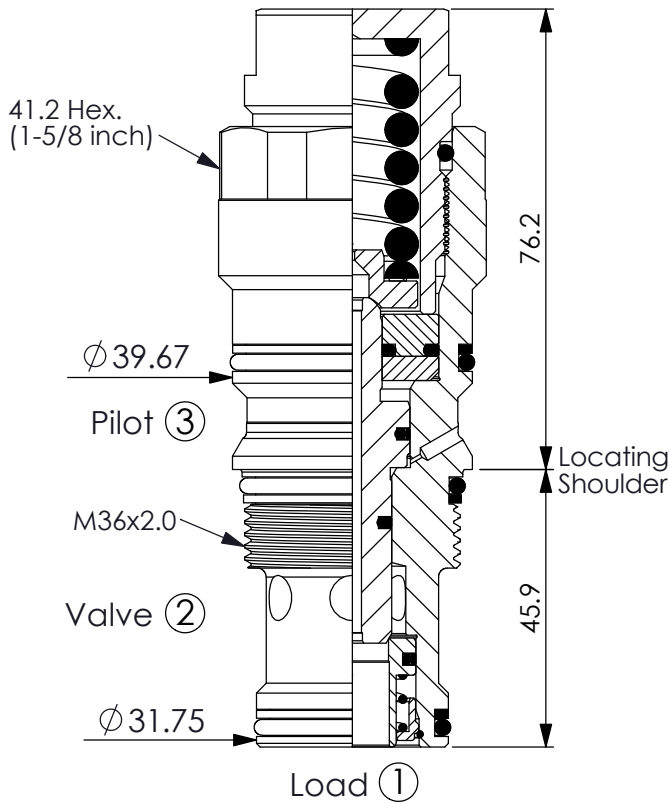


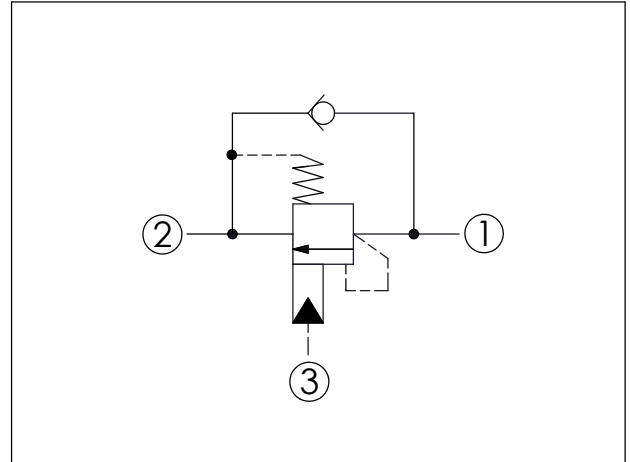
COUNTERBALANCE VALVE (Fixed Setting)

Ordering Code: **CBA-17A-X-Y-Z**



UNIT:mm

Illustrations / detail are for reference only. Data subject to change.

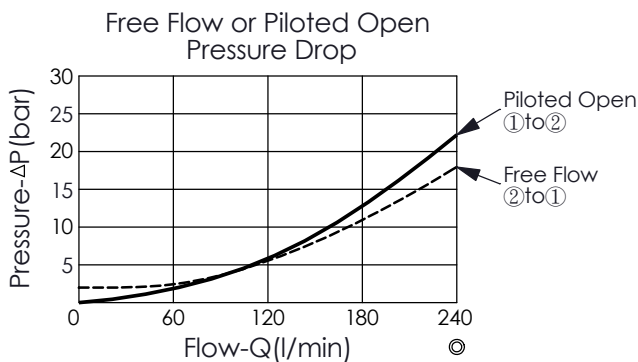


TECHNICAL DATA

| | |
|--------------------------|--------------|
| Max. operating pressure: | 420 bar |
| Rated flow: | 240 l/min |
| Cavity-Tooling: | 17A-3 |
| Installation torque: | 200 - 215 Nm |
| Weight: | 0.833 kg |

Pressure Setting:

Setting should be 1.3 times maximum load induced pressure. (We suggest when the Max. setting pressure is 420 bar, the load pressure has to be lower than 320 bar.)



X PILOT RATIO

3D 4 : 1 (with sealed pilot)

Y

SPRINGS

FIXED SETTING

300

285 - 315 bar

Z

OPTION

N

Non-adjustable
2.0 bar Cracking Pressure