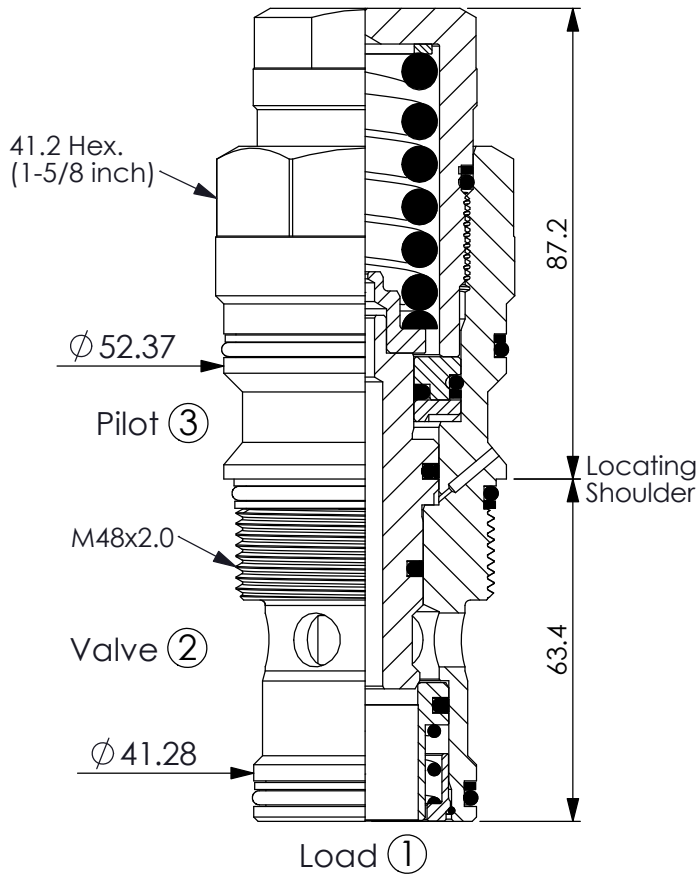


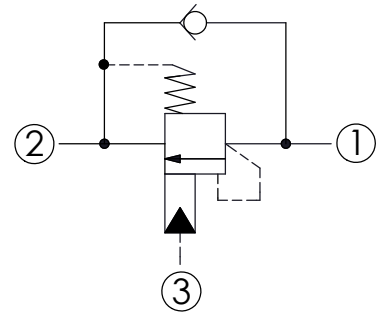
## COUNTERBALANCE VALVE (Fixed Setting)

Ordering Code: **CBA-19A-X-Y-Z**



UNIT:mm

Illustrations / detail are for reference only. Data subject to change.

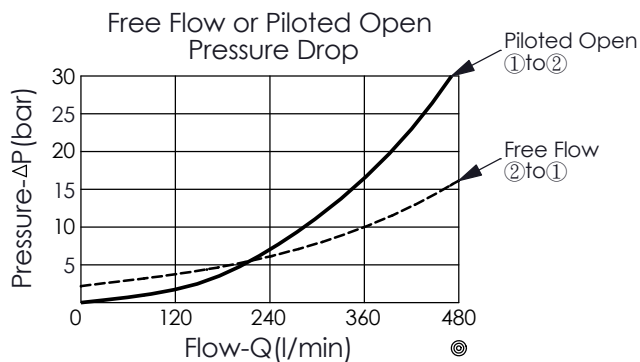


### TECHNICAL DATA

Max. operating pressure:	350 bar
Rated flow:	480 l/min
Cavity-Tooling:	19A-3 (19AB-3)
Installation torque:	465 - 500 Nm
Weight:	1.530 kg

### Pressure Setting:

Setting should be 1.3 times maximum load induced pressure.  
(We suggest when the Max. setting pressure is 350 bar, the load pressure has to be lower than 270 bar.)



### X PILOT RATIO

**3E** 5 : 1 (with sealed pilot)

**Y**

### SPRINGS

FIXED SETTING

**230**

215 - 245 bar

**Z**

### OPTION

**N**

Non-adjustable  
2.0 bar Cracking Pressure