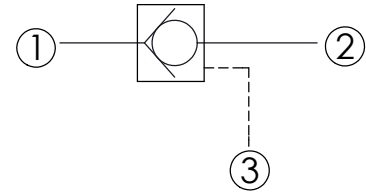
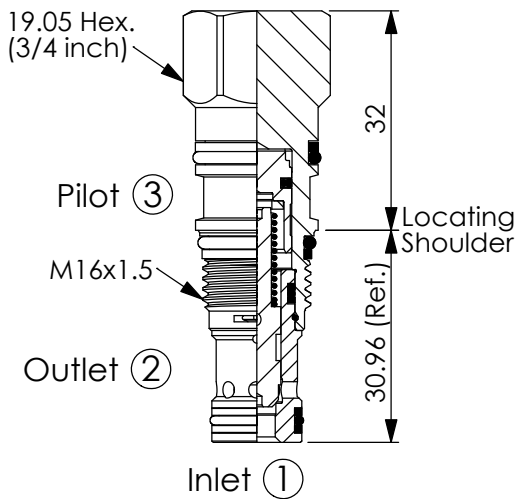


Ordering Code: **CC-163A-X-Y-Z**

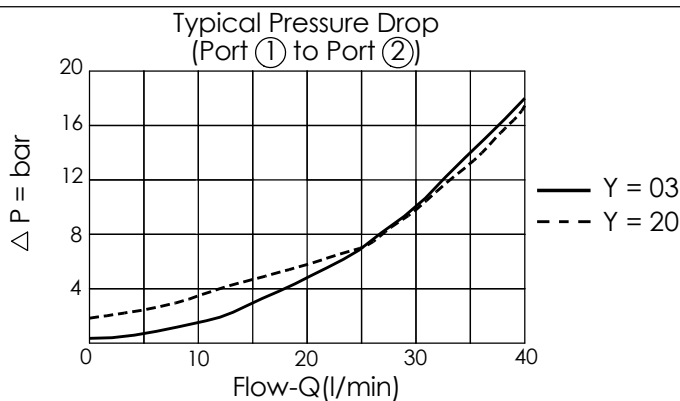


TECHNICAL DATA

Max. Operating pressure:	350	bar
Rated flow:	40	l/min
Cavity-Tooling:	163A-3	
Installation torque:	27 - 33	Nm
Weight:	0.09	kg
· Maximum Leakage Approximately (0.07 cc/min.)		

UNIT:mm

Illustrations / detail are for reference only. Data subject to change.



X OPERATION

30 ① to ② (Free Flow)
(with sealed pilot)
Pilot Ratio 3:1

Y SPRINGS

Cracking pressure

Y	Cracking pressure
※03	0.3 bar
20	2.0 bar
35	3.5 bar
50	5.0 bar
70	7.0 bar
140	14.0 bar

※ Please consult our technical department.

Z OPTION

N Non-adjustable