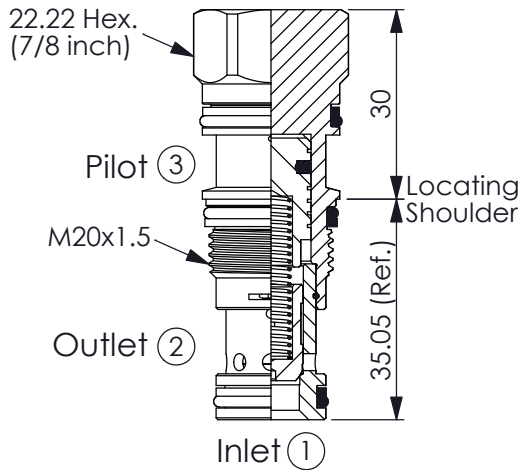
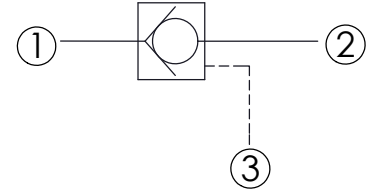


Ordering Code: **CC-11A-X-Y-Z**



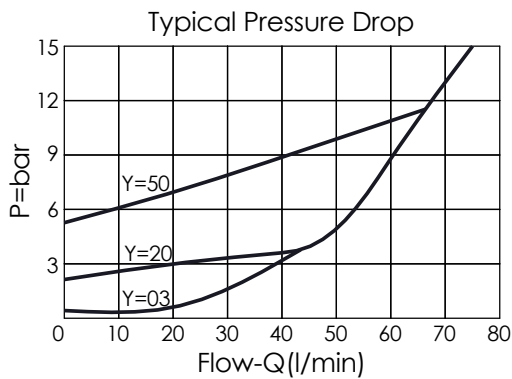
UNIT:mm

Illustrations / detail are for reference only. Data subject to change.



TECHNICAL DATA

Max. pressure:	350	bar
Rated flow:	80	l/min
Cavity-Tooling:	11A-3	
Installation torque:	40 - 50	Nm
Weight:	0.13	kg



X OPERATION

30 ① to ② (Free Flow)
(with sealed pilot)
Pilot Ratio 1.8:1

Y

SPRINGS

Cracking pressure

007	0.07 bar
015	0.15 bar
03	0.3 bar
10	1.0 bar
20	2.0 bar
35	3.5 bar
50	5.0 bar
70	7.0 bar
105	10.5 bar

Z OPTION

N Non-adjustable

NP Non-adjustable
With stainless steel
external metal components
(Buna-N Seal)